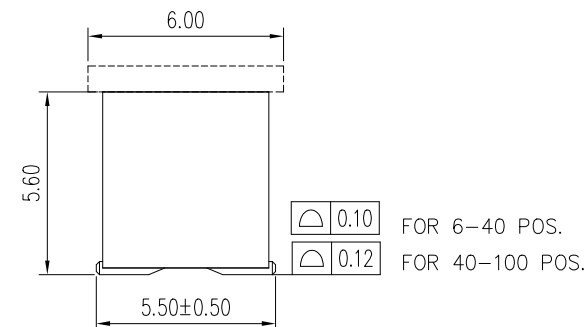


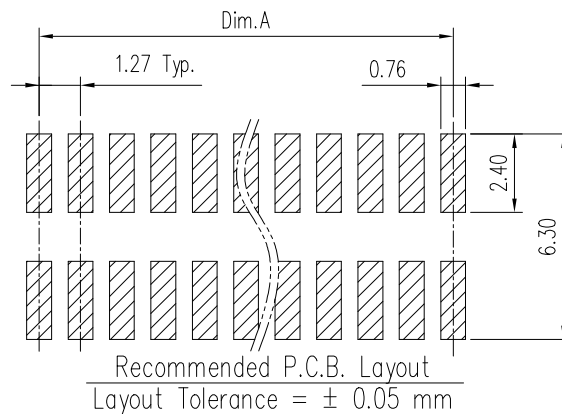
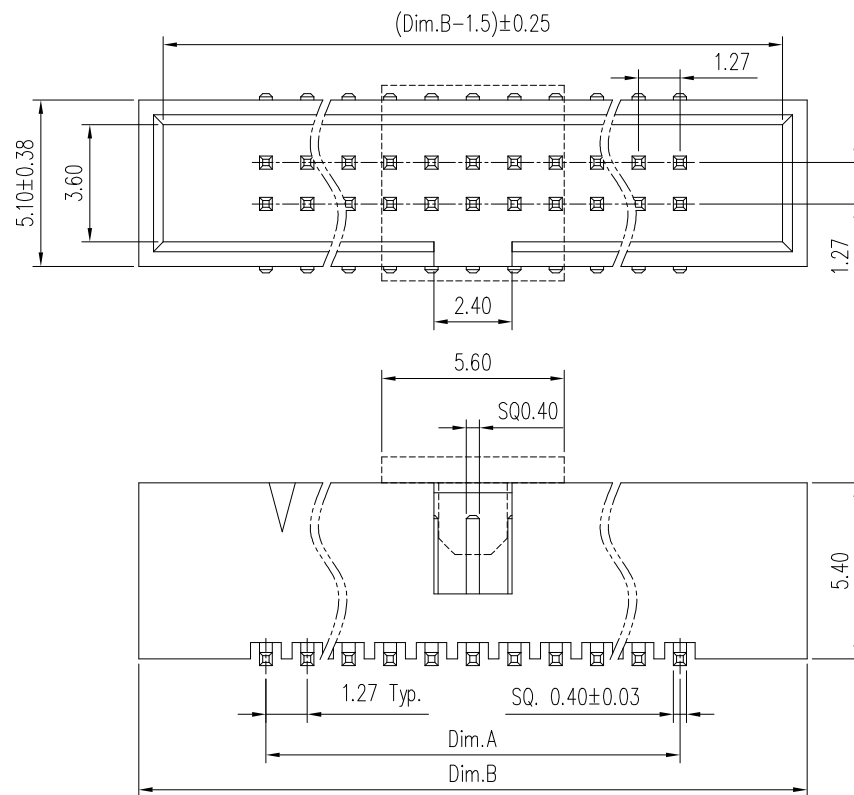
TABLE 1 ,DIM INFORMATION

DASH No.	Dim.	Amount of Pins	Dim.A	Dim.B
-00X 06 XX LF	06	2.54	10.11	
-00X 08 XX LF	08	3.81	11.38	
-00X 10 XX LF	10	5.08	12.65	
-00X 12 XX LF	12	6.35	13.92	
-00X 14 XX LF	14	7.62	15.19	
-00X 16 XX LF	16	8.89	16.46	
-00X 20 XX LF	20	11.43	19.00	
-00X 22 XX LF	22	12.70	20.27	
-00X 26 XX LF	26	15.24	22.81	

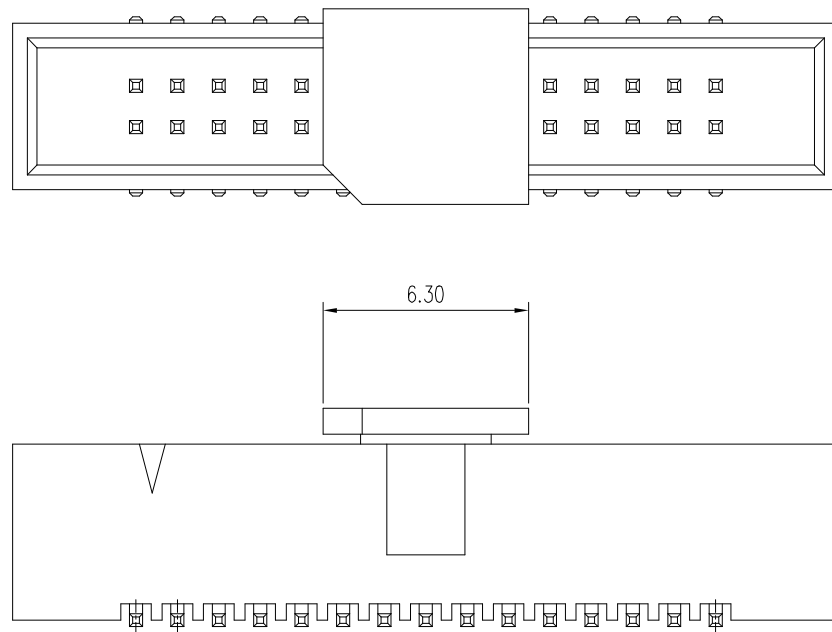
DASH No.	Dim.	Amount of Pins	Dim.A	Dim.B
-00X 30 XX LF	30	17.78	25.35	
-00X 34 XX LF	34	20.32	27.89	
-00X 40 XX LF	40	24.13	31.70	
-00X 44 XX LF	44	26.67	34.24	
-00X 50 XX LF	50	30.48	38.05	
-00X 60 XX LF	60	36.83	44.40	
-00X 64 XX LF	64	39.37	46.94	
-00X 68 XX LF	68	41.91	49.48	
-00X 80 XX LF	80	49.53	57.10	
-00X A0 XX LF	100	62.23	69.90	



DIM. A	2-60 PINS	± 0.20
	62-100 PINS	± 0.30



mat'l. code				surface ISO 1302 ✓	tolerance ISO 406 ISO 1101	projection mm	product family MINITEK			
ltr	ecn no	dr	date	tolerances unless otherwise specified			title			
H	ELX-N-011951	ZK	2012-06-15	angles	.0±.38		1.27X1.27MM BTB HEADER SHROUDED SMT			
J	ELX-N-14099	TIM	2013-02-25	linear	.00±.25					
K	ELX-N-17601	TIM	2014-04-30	0°±2°	.000±.10	scale 5:1	dwg no 20021521			
L	ELX-N-19182	TIM	2014-10-24	dr						
M	ELX-N-28314	TONY	2017-10-31	engr	STERLING LIN	2009-09-15	sheet 1 of 2 size A3			
N	ELX-N-28945	TONY	2018-03-13	chr	GRAY HSIEH	2009-09-15				
				appd	JOSEPH	2009-09-15	type Product Customer Drawing			
sheet index	revision sheet	N 1	N 2							



CONFIG 1: 20021521-001XXXXLF
WITH EDGE CUT CAP, OTHER DIMENSIONS SEE SHEET 1

NOTE:

1. MATERIAL:
HOUSING: HIGH TEMP PLASTIC, UL94-V0, BLACK
TERMINAL: COPPER ALLOY, SQ=0.40±0.03MM
2. FINISH:
TERMINAL: SEE PN STRUCTURE.
3. SPEC.:
PRODUCT SPEC: GS-12-629
PACKING SPEC: GS-14-1420
4. THE HSG. WILL WITHSTAND EXPOSURE TO 260C
PEAK TEMP. FOR 10 SEC. IN A CONVECTION, INFRA-RED
OR VAPOR PHASE REFLOW OVEN.
5. PRODUCT NUMBERING:
20021521 - 0 0 X XX X X LF

LEAD FREE

PLATING:

1: GOLD FLASH, ALL OVER
4: 0.25um(10U") GOLD AT CONTACT
8: 0.76um(30U") GOLD AT CONTACT
9: 1u" GOLD OVER 30u" PdNi AT CONTACT

PACKING

T: TUBE

D: TUBE+CAP

C: TAPE&REEL+CAP(P: 12mm)

E: TAPE&REEL+CAP(P: 16mm)

Q: TAPE&REEL W/O CAP(P: 12mm)

PIN COUNT

SEE TABLE 1

CONFIG

0: NO CAP OR WITH NYLON CAP

1: WITH LCP CAP

mat'l. code				surface ISO 1302 ✓	tolerance ISO 406 ISO 1101	projection ①-1101	product family MINITEK			
ltr	ecn no	dr	date	tolerances unless otherwise specified		mm	title 1.27X1.27MM BTB HEADER SHROUDED SMT			
				angles	linear					
				0°±2'		scale 5:1				
				dr	STERLING LIN	2009-09-15	dwg no			
				eng	STERLING LIN	2009-09-15	sheet2 of 2			
				chr	GRAY HSIEH	2009-09-15	20021521			
				appd	JOSEPH	2009-09-15	A3			
sheet index	revision sheet	N	N				type Product Customer Drawing			
		1	2							