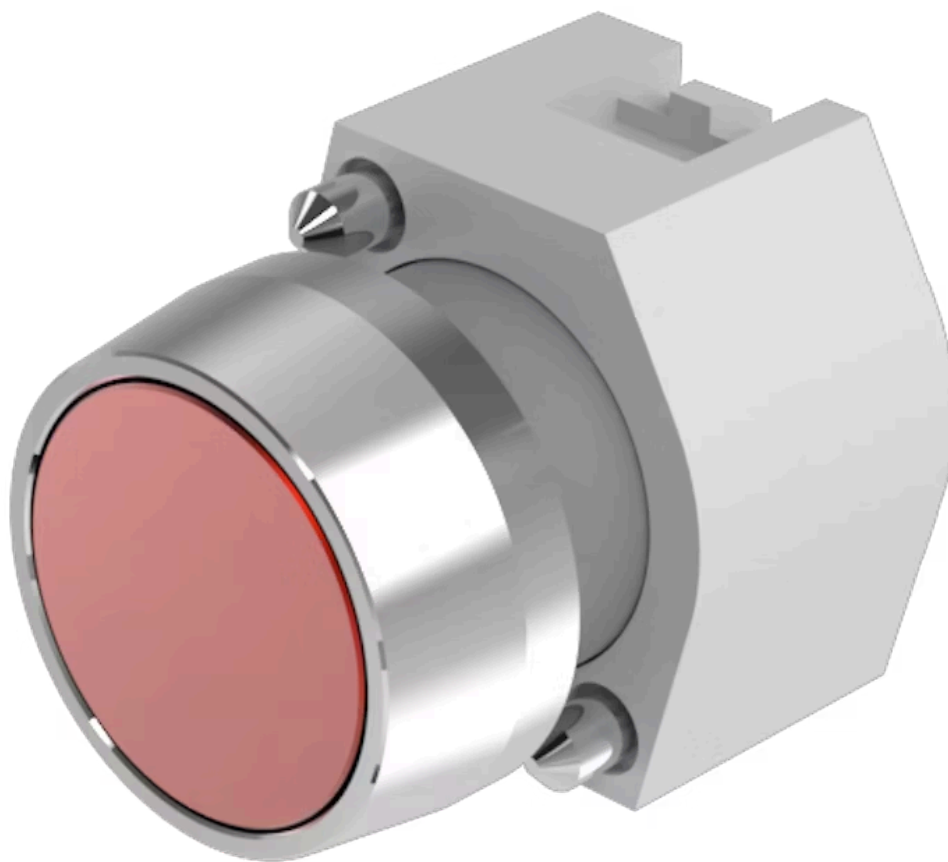


# Actuator

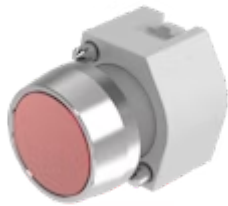
704.041.2



<https://eao.com/p/704.041.2>

Your product:

---



## 704.041.2 Actuator

### FRONT

Front bezel material:	Aluminium
Front dimension:	Ø 29 mm
Front bezel colour:	Nature
Front form:	round

### MOUNTING

Design:	raised
---------	--------

### OPERATING-/INDICATION PART

Lens shape:	flush
Lens material:	Aluminium
Lens illumination:	non illuminative
Lens optics:	opaque
Lens colour:	Red

### ELECTRICAL CHARACTERISTICS

Standards:	The switches comply with the "Standards for low-voltage switching devices" DIN EN 60947-1
------------	---

### MECHANICAL CHARACTERISTIC

Weight:	0.04 kg
Mechanical lifetime:	≤3 Mio. cycles of operation
Switching action:	Maintained

**Operating force:** 8 N

**Operating Travel:** ca. 5.8 mm ± 0.2 mm

### AMBIENT CONDITION

**Operating temperature:** – 40 °C ... + 55 °C

**Storage temperature:** – 40 °C ... + 85 °C

**IP Protection:** IP65 front side

### OTHER

**Short Description:** Actuator, Ø 29 mm, flush, non illuminative, Red, Aluminium, opaque, round, Nature, Aluminium, anodised, Maintained

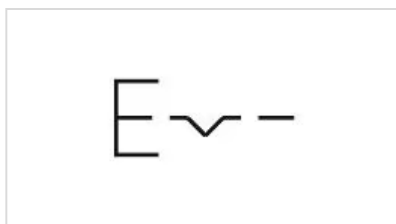
**Hints:** Frontring with protective cover to be mounted with a torque of 0.4 Nm onto actuator, Max. 3 switching elements can be clipped on

**Housing colour:** Grey

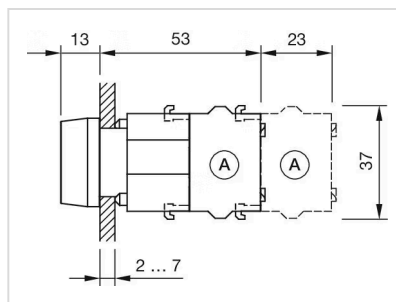
**Housing material:** Plastic

**max. number of switching elements:** 3

**Wiring diagrams:**

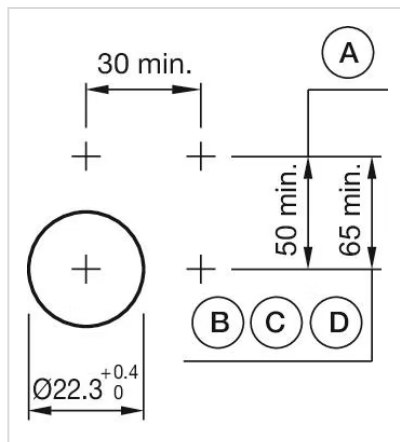


**Dimension drawings:**



A = Screw terminal

**Mounting cut-outs:**



- A = Screw terminal
- B = Push-in terminal (PIT)
- C = Plug-in terminal 6.3 mm x 0.8 mm
- D = Double plug-in terminal 6.3 mm x 0.8 mm