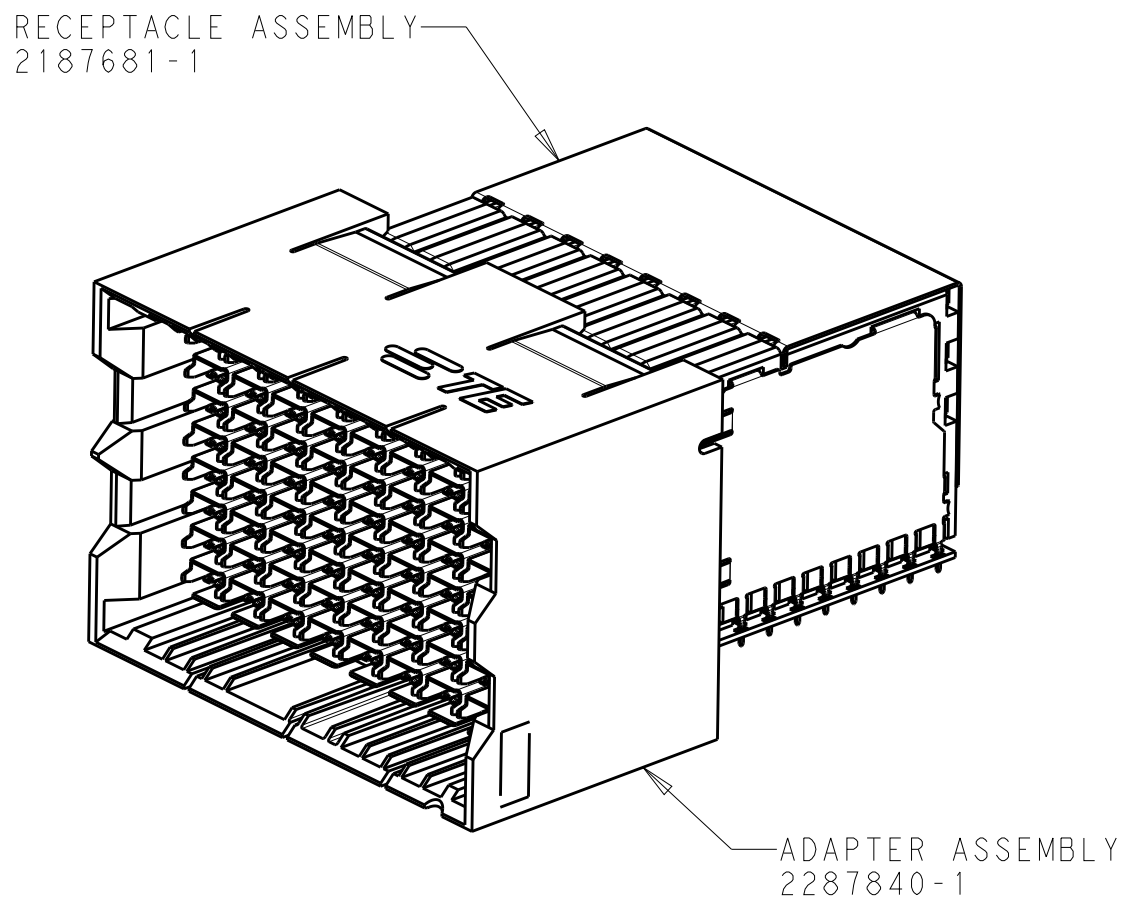
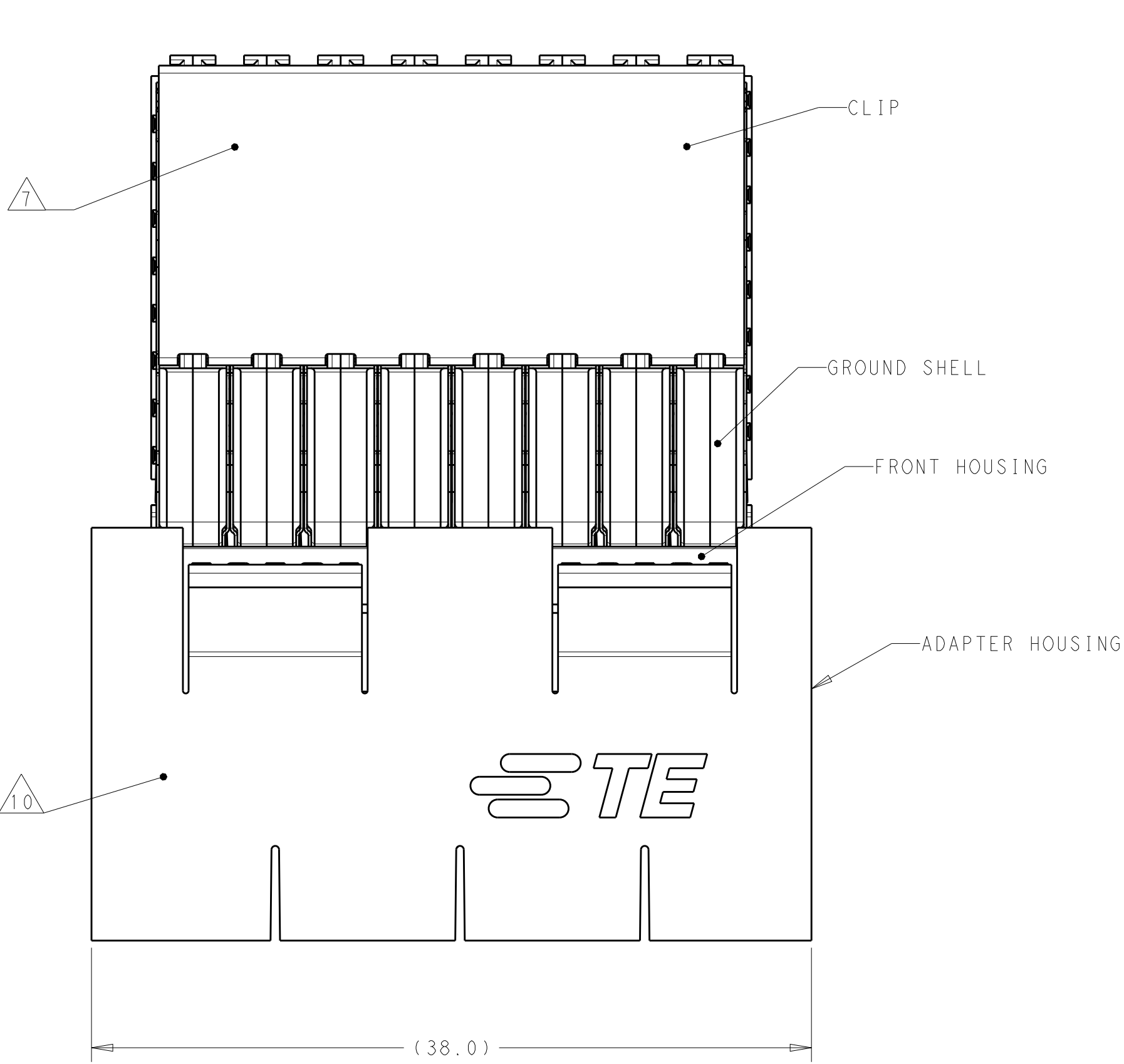
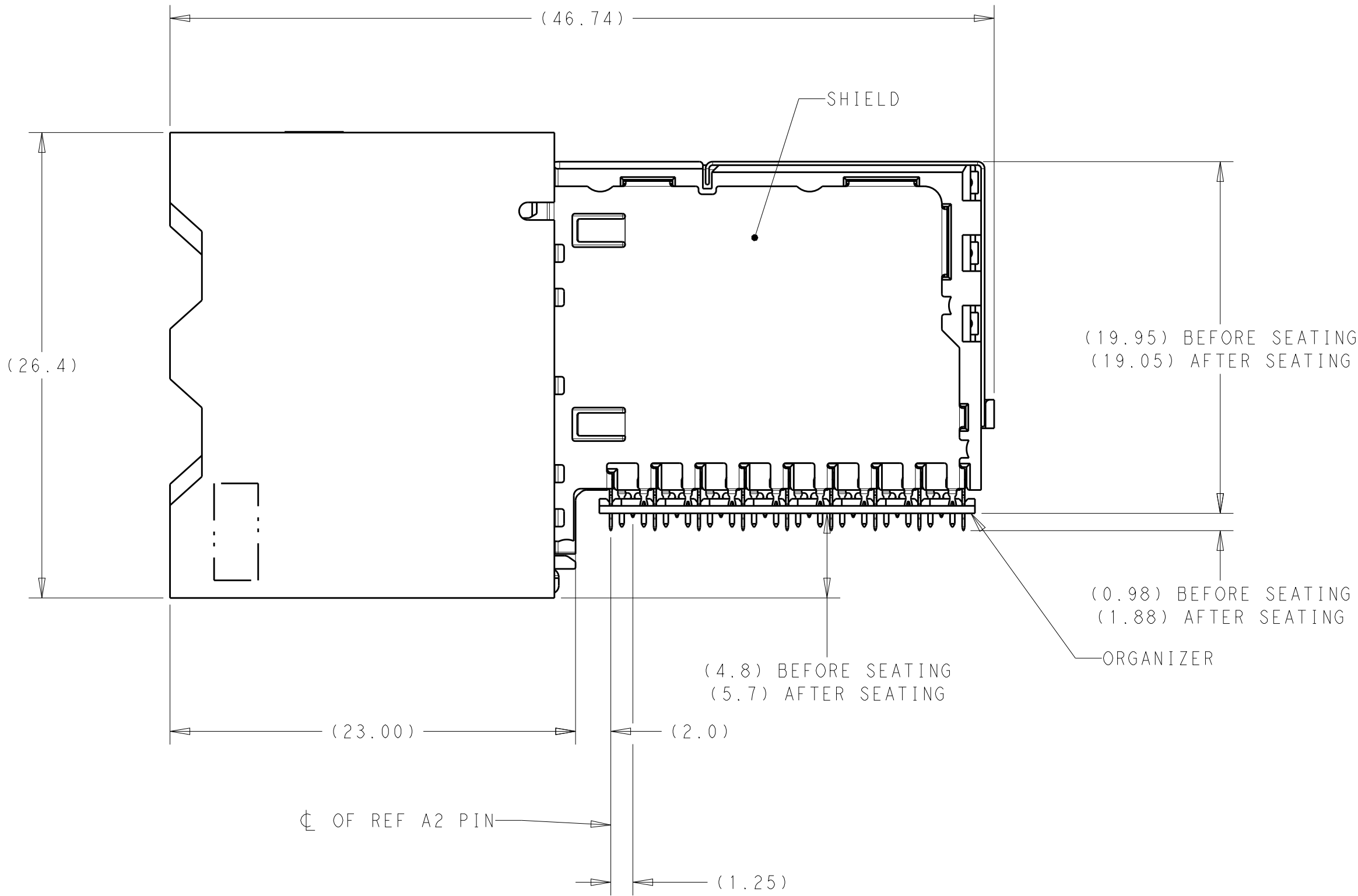
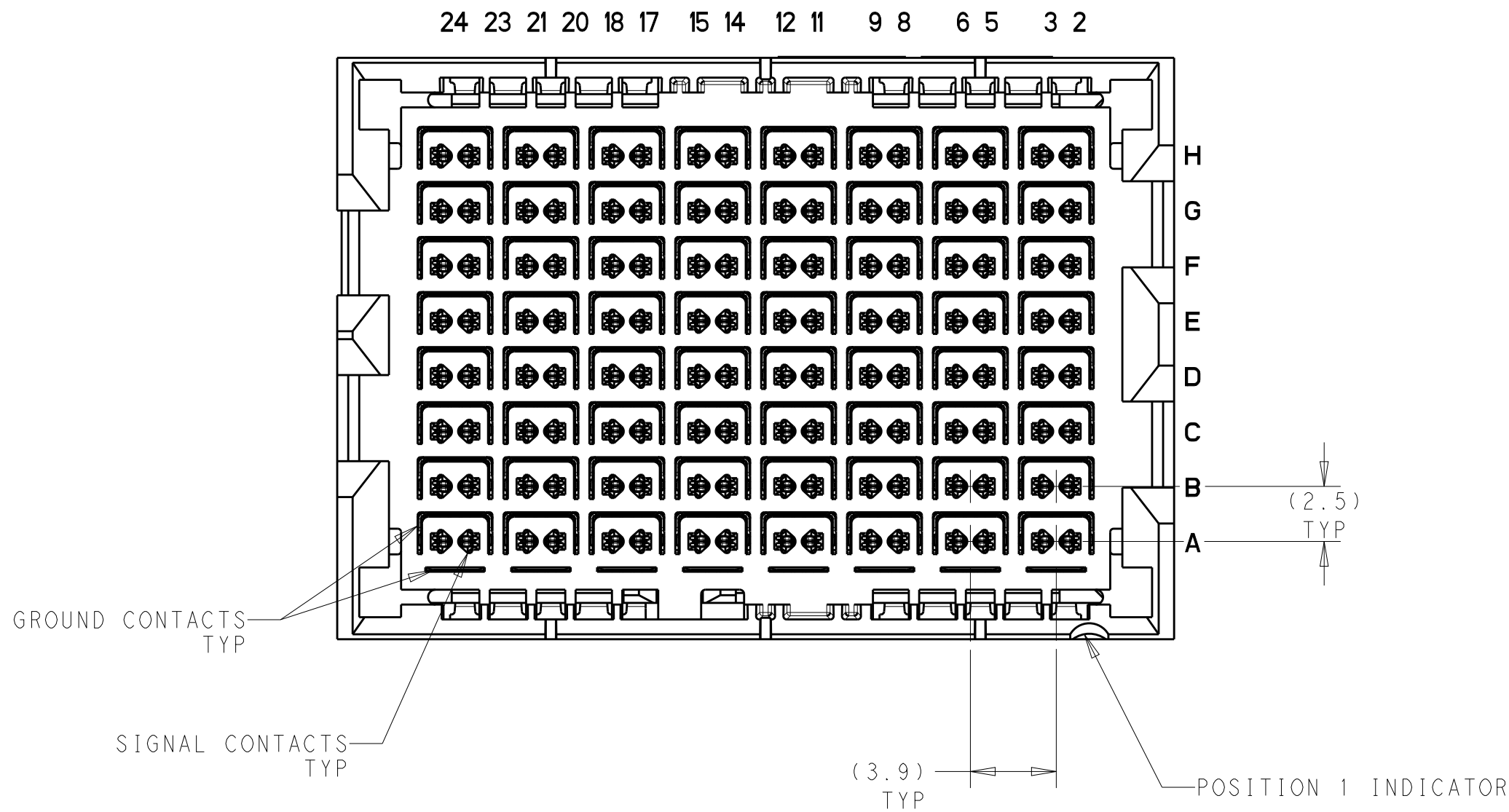


REVISIONS					
P	LTR	DESCRIPTION	DATE	DWN	APVD
	1	RELEASED PER ECO-17-000464	23JAN2017	JM	MH
	A1	ECO-17-006000	01MAY2017	MH	DS



SCALE 2:1

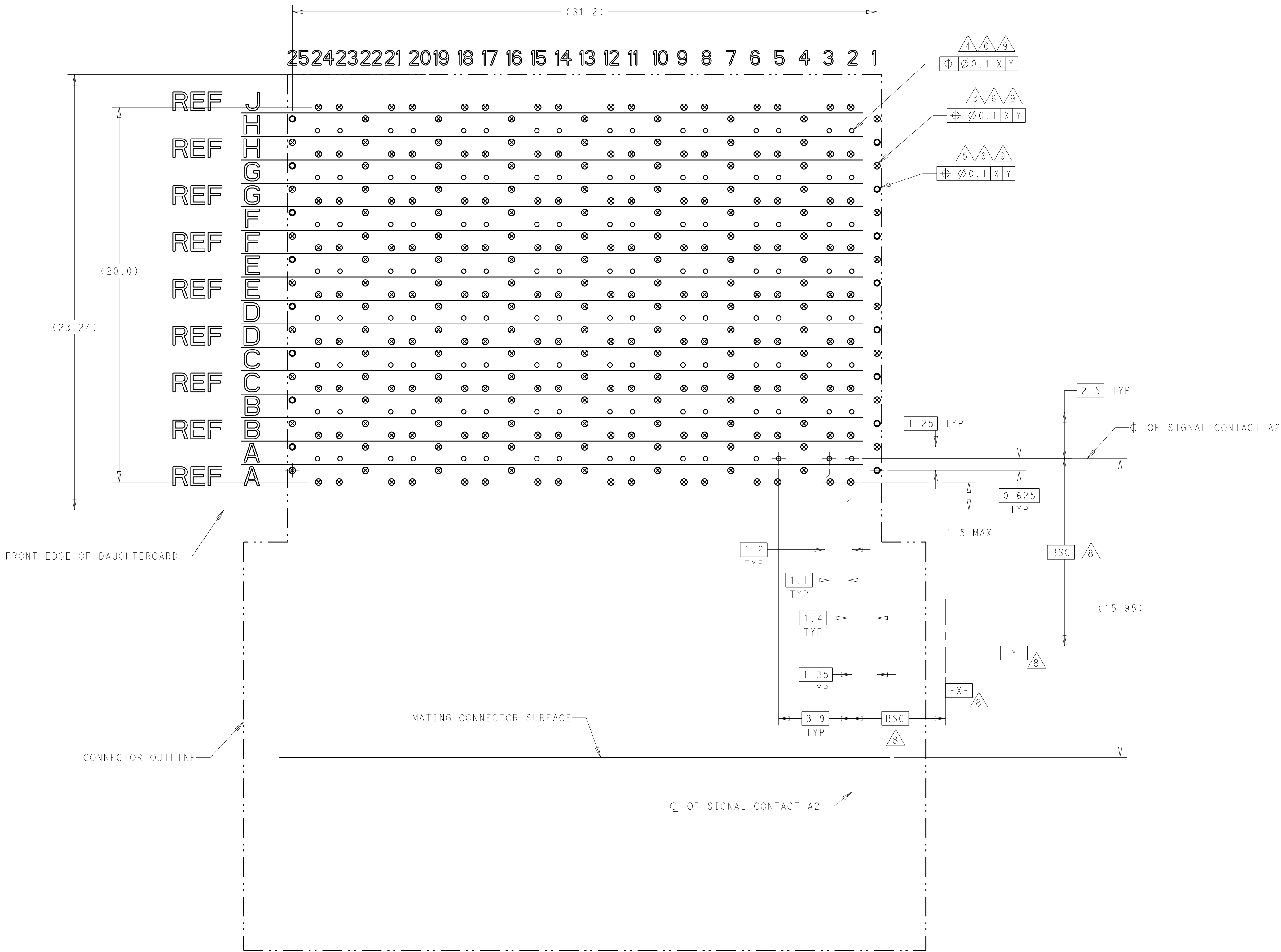
- 1 CONTACTS AND SHIELDS - COPPER ALLOY
CLIP - STAINLESS STEEL
HOUSINGS, GROUND SHELLS, AND ORGANIZER - THERMOPLASTIC, UL 94V-0, BLACK
- 2 CONFORMS TO THE REQUIREMENTS OF TE PRODUCT SPECIFICATION 108-32112
BASED ON TELCORDIA GR-1217-CORE FOR SYSTEM QUALITY LEVEL III,
APPLICATIONS IN CONTROLLED ENVIRONMENTS (CENTRAL OFFICE).
COMPLIANT PIN AREA: 0.5µm MIN MATTE TIN.
- 3 GROUND PLATED THRU HOLE REQUIREMENTS:
FINISHED HOLE = $\varnothing 0.37 \pm 0.05$
HOLE SIZE PRIOR TO PLATING = $\varnothing 0.450 \pm 0.025$
COPPER THICKNESS = 0.025 MIN
IMMERSION TIN IF APPLICABLE = (0.00095)
- 4 SIGNAL PLATED THRU HOLE REQUIREMENTS:
FINISHED HOLE = $\varnothing 0.29 \pm 0.05$
HOLE SIZE PRIOR TO PLATING = $\varnothing 0.368 \pm 0.025$ (#79 DRILL)
COPPER THICKNESS = 0.025 MIN
IMMERSION TIN IF APPLICABLE = (0.00095)
- 5 SI VIA PLATED THRU HOLE REQUIREMENTS:
FINISHED HOLE = ($\varnothing 0.22$)
HOLE SIZE PRIOR TO PLATING = $\varnothing 0.300 \pm 0.025$
COPPER THICKNESS = 0.025 MIN
IMMERSION TIN IF APPLICABLE = (0.00095)
- 6 SI VIAS & SIGNAL HOLES:
PTH DIMENSIONS APPLY TO THE TOP 1.00mm OF THE PCB THICKNESS FROM THE
CONNECTOR MOUNTING SIDE.
GROUND HOLES:
PTH DIMENSIONS APPLY TO THE TOP 1.25mm OF THE PCB THICKNESS FROM THE
CONNECTOR MOUNTING SIDE.
- 7 CONNECTOR MARKED WITH PART NUMBER, DATE CODE, AND "85 OHM" IN
APPROXIMATE AREA SHOWN.
- 8 DATUMS AND BASIC DIMENSIONS ESTABLISHED BY CUSTOMER
- 9 APPLIES TO FINISHED HOLE DIAMETER.
- 10 CONNECTOR MARKED WITH ASSEMBLY PART NUMBER, DATE CODE, AND "85 OHM"
IN APPROXIMATE AREA SHOWN.



2287841-1
PART NUMBER

THIS DRAWING IS A CONTROLLED DOCUMENT.		DWN J. McCLELLAN 26SEP2014	TE Connectivity	
DIMENSIONS:		CHK J. McCLELLAN 26SEP2014		
mm	TOLERANCES UNLESS OTHERWISE SPECIFIED:	APVD J. McCLELLAN 26SEP2014	NAME	RIGHT ANGLE ADAPTER ASSEMBLY, 8 PAIR 8 COLUMN, 85 OHM DPO, STRADA WHISPER
	0 PLC ± 1 PLC ± 2 PLC ±0.13 3 PLC ± 4 PLC ± ANGLES ±	PRODUCT SPEC 2	SIZE	114-32120
MATERIAL 1	FINISH 2	APPLICATION SPEC	CAGE CODE	2287841
CUSTOMER DRAWING		WEIGHT	RESTRICTED TO	
		SCALE 4:1	SHEET 1 OF 2	REV A1

REVISIONS					
P	LTR	DESCRIPTION	DATE	DWN	APVD
-	-	SEE SHEET 1	-	-	-



RECOMMENDED PCB LAYOUT
SINGLE CONNECTOR (NON-STACKING)
COMPONENT SIDE SHOWN
SCALE 8:1

- = SIGNAL
- ⊗ = GROUND
- ⊙ = SIGNAL INTEGRITY VIA TO GROUND

THIS DRAWING IS A CONTROLLED DOCUMENT.		DWN J. McCLELLAN 26SEP2014	TE Connectivity	
DIMENSIONS: mm		CHK J. McCLELLAN 26SEP2014	NAME	
TOLERANCES UNLESS OTHERWISE SPECIFIED: 0 PLC ± 1 PLC ±0.13 2 PLC ± 3 PLC ± 4 PLC ± ANGLES ± FINISH		APVD J. McCLELLAN 26SEP2014	PRODUCT SPEC	
MATERIAL		APPLICATION SPEC	RESTRICTED TO	
-		WEIGHT	-	
-		CUSTOMER DRAWING	-	
SCALE 1:1		SHEET 2 OF 2	REV A1	