

THIS DRAWING IS UNPUBLISHED.		RELEASED FOR PUBLICATION		20		LOC		DIST		REVISIONS				
COPYRIGHT 20		BY TYCO ELECTRONICS CORPORATION. ALL RIGHTS RESERVED.				GP		00		P	LTR	DESCRIPTION		DATE
										A		RELEASED		02JUN2008
										AI		REVISE THE SIGNAL HOLE AMOUNT ON LAYOUT		29NOV2014

DWN		2JUNE08		R. GRZYBOWSKI		Tyco Electronics		Harrisburg, PA 17105-3608	
CHK		2JUNE08		P. DAMATO		NAME		RIGHT ANGLE PIN CONNECTOR	
APVD		2JUNE08		S. FLICKINGER		PRODUCT SPEC		SOLDER TAILS, STD	
						APPLICATION SPEC		FLATPAQ	
						WEIGHT		A200779	
						CUSTOMER DRAWING		SCALE 3:1	
								SHEET 1 OF 3	
								REV A1	

ELCON FLATPAQ

THIS DRAWING IS UNPUBLISHED.

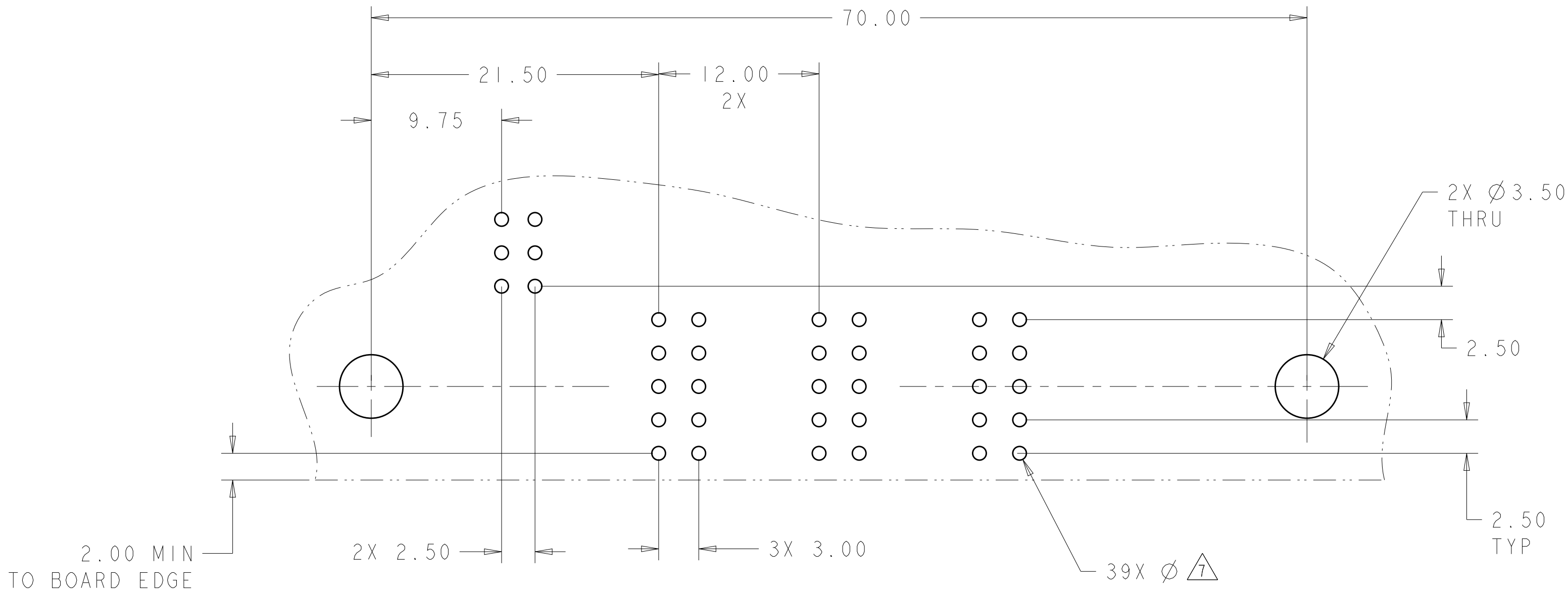
RELEASED FOR PUBLICATION

20

© COPYRIGHT 20

BY TYCO ELECTRONICS CORPORATION. ALL RIGHTS RESERVED.

LOC	DIST	REVISIONS					
GP	00	P	LTR	DESCRIPTION	DATE	DWN	APVD
			-	SEE SHEET 1	-	-	-



PRINTED CIRCUIT LAYOUT  
COMPONENT SIDE

CONNECTOR	CATALOG MODULE #	QTY	SIZE NO.	CONTACT QTY	MATING PIN	MAX. CURRENT (PER CONTACT)	CONTACT SPACING	VOLTAGE RATING
PIN	FPI21	3	8	3	1.25 X 7.00 [.049 X .276]	35 amps	7.50 [.2953]	250
	FP314	1	22	6	.64 SQ. [.025]	3 amps	2.50 [.0984]	125
	FP506	1	RIGHT ANGLE GUIDE SOCKET					
	FP500	1	LEFT MOUNTING FLANGE					
	FP501	1	RIGHT MOUNTING FLANGE					

ELCON

FLATPAQ

THIS DRAWING IS A CONTROLLED DOCUMENT FOR TYCO ELECTRONICS CORPORATION  
IT IS SUBJECT TO CHANGE AND THE CONTROLLING ENGINEERING ORGANIZATION  
SHOULD BE CONTACTED FOR THE LATEST REVISION.

DIMENSIONS:  
mm[INCHES]

MATERIAL  
-

TOLERANCES UNLESS  
OTHERWISE SPECIFIED:

0 PLC ±.5  
1 PLC ±.5  
2 PLC ±.25  
3 PLC ±.  
4 PLC ±.  
ANGLES ±.5  
FINISH -

DWN  
R. GRZYBOWSKI  
2JUNE08

CHK  
P. DAMATO  
2JUNE08

APVD  
S. FLICKINGER  
2JUNE08

PRODUCT SPEC  
-

APPLICATION SPEC  
-

WEIGHT  
-

CUSTOMER DRAWING

Tyco Electronics  
Harrisburg, PA 17105-3608

NAME  
RIGHT ANGLE PIN CONNECTOR  
SOLDER TAILS , STD  
FLATPAQ

SIZE  
A200779

CAGE CODE  
C-6646705

DRAWING NO  
-

RESTRICTED TO  
-

SCALE  
3:1

SHEET  
2

OF  
3

REV  
A1

THIS DRAWING IS UNPUBLISHED.

RELEASED FOR PUBLICATION20

© COPYRIGHT 20BY TYCO ELECTRONICS CORPORATION. ALL RIGHTS RESERVED.

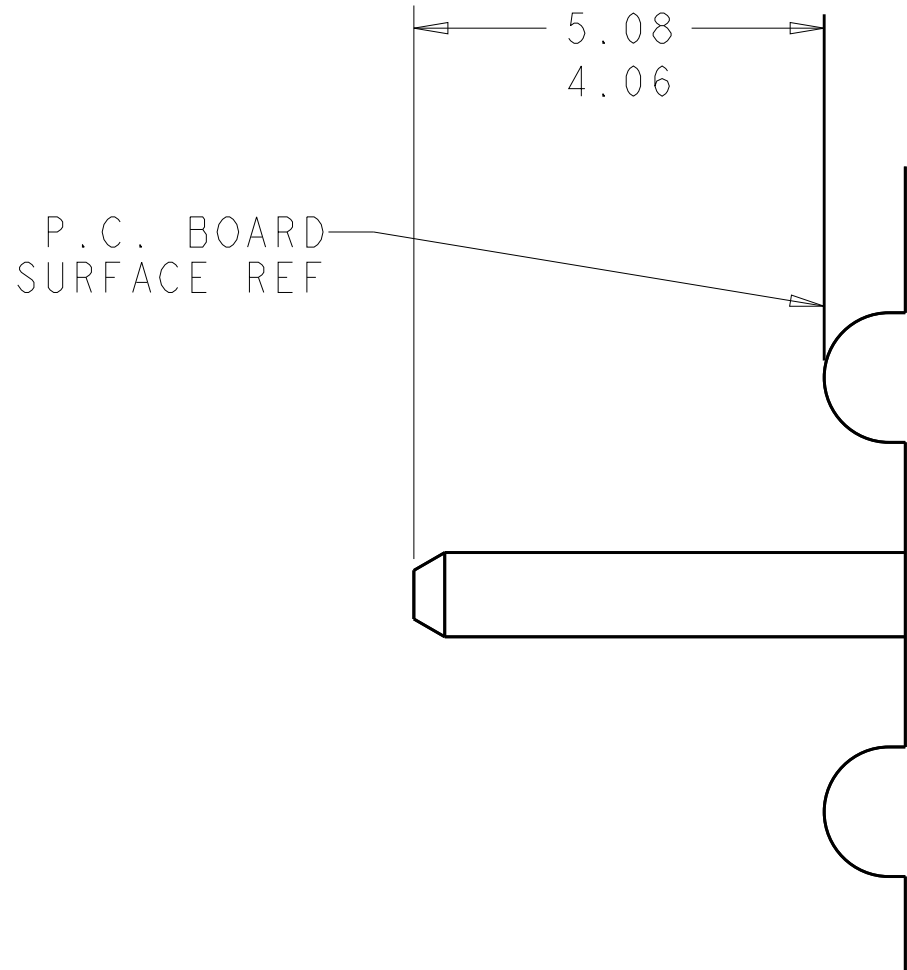
LOC	DIST	REVISIONS					
GP	00	P	LTR	DESCRIPTION	DATE	DWN	APVD
			-	SEE SHEET 1	-	-	-

D

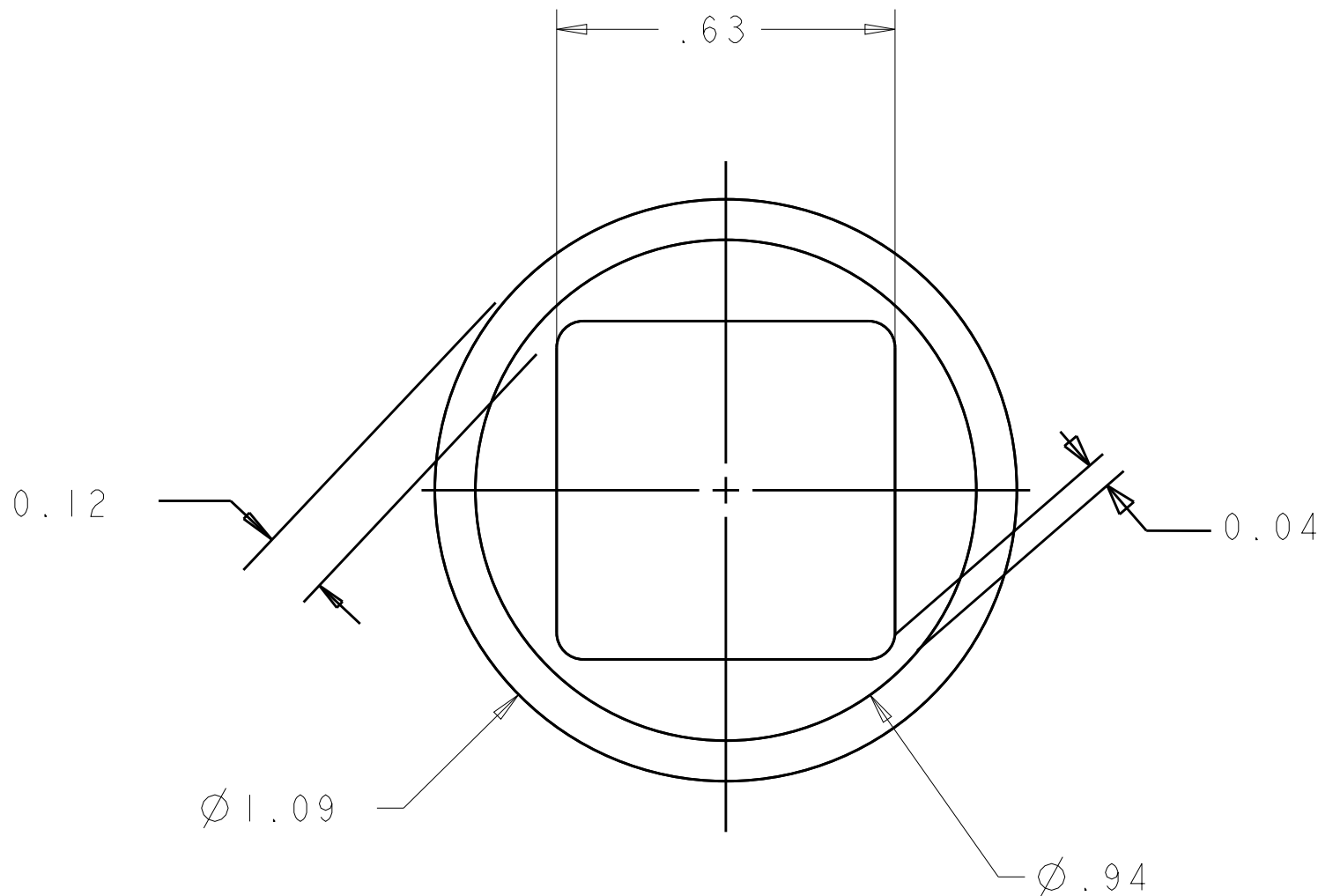
D

C

C



6. SOLDER TAIL DETAIL  
SCALE 10 : 1



**7** SOLDER TERMNIATION AREA  
SCALE 40:1  
RECOMMENDED PRINTED CIRCUIT HOLE  
SOLDER HOLE  
FINISHED HOLE: Ø1.02 ±.08  
DRILLED HOLE: Ø1.15 ±.013  
COPPER PLATE: .025 MIN  
TIN PLATE: .008 MIN. (PER SURFACE)

B

B

A

A

ELCON

FLATPAQ

THIS DRAWING IS A CONTROLLED DOCUMENT FOR TYCO ELECTRONICS CORPORATION IT IS SUBJECT TO CHANGE AND THE CONTROLLING ENGINEERING ORGANIZATION SHOULD BE CONTACTED FOR THE LATEST REVISION.		DWN R. GRZYBOWSKI 2JUNE08 CHK P. DAMATO 2JUNE08 APVD S. FLICKINGER 2JUNE08		Tyco Electronics Harrisburg, PA 17105-3608	
DIMENSIONS: mm[INCHES]		TOLERANCES, UNLESS OTHERWISE SPECIFIED:		NAME RIGHT ANGLE PIN CONNECTOR SOLDER TAILS , STD FLATPAQ	
0 PLC ±.5 1 PLC ±.5 2 PLC ±.25 3 PLC ±. 4 PLC ±. ANGLES ±.5 FINISH		PRODUCT SPEC - APPLICATION SPEC - WEIGHT - CUSTOMER DRAWING		SIZE A200779 CAGE CODE C-6646705 DRAWING NO - RESTRICTED TO - SCALE 3:1 SHEET 3 OF 3 REV A1	