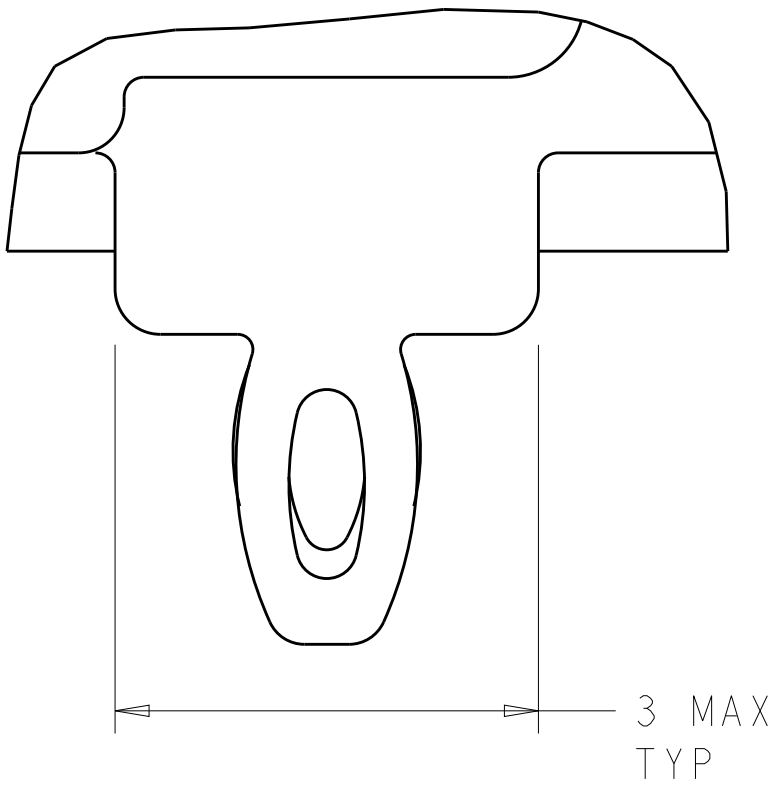


LOC	DIST	REVISIONS						
		P	LTR	DESCRIPTION	DATE	DWN	APVD	
GP	00		C	REVISED PER ECO-10-018054	03NOV2010	CJV	EJB	
			D	REVISED PER ECO-12-003841	14MAR2012	KS	AC	
			E	REVISED PER ECO-12-005533	31MAR2012	JY	AC	
			F	REVISED PER ECO-14-017735	30EC2014	RG	MC	

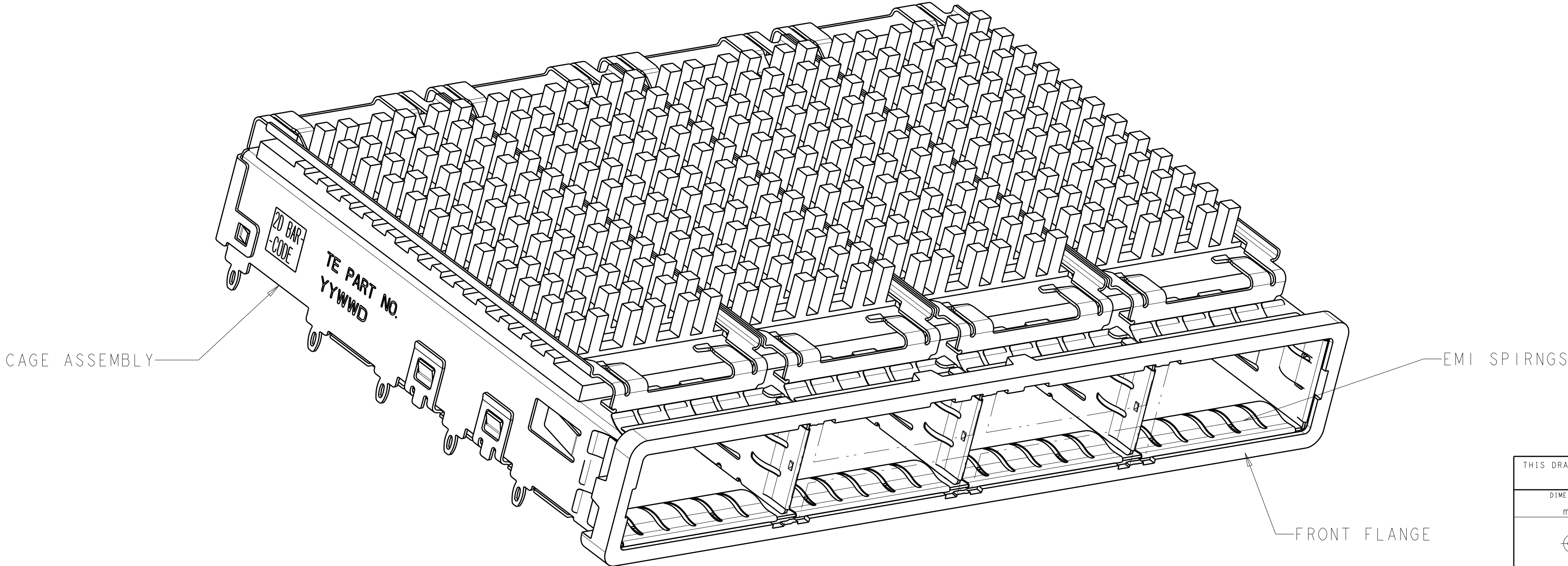
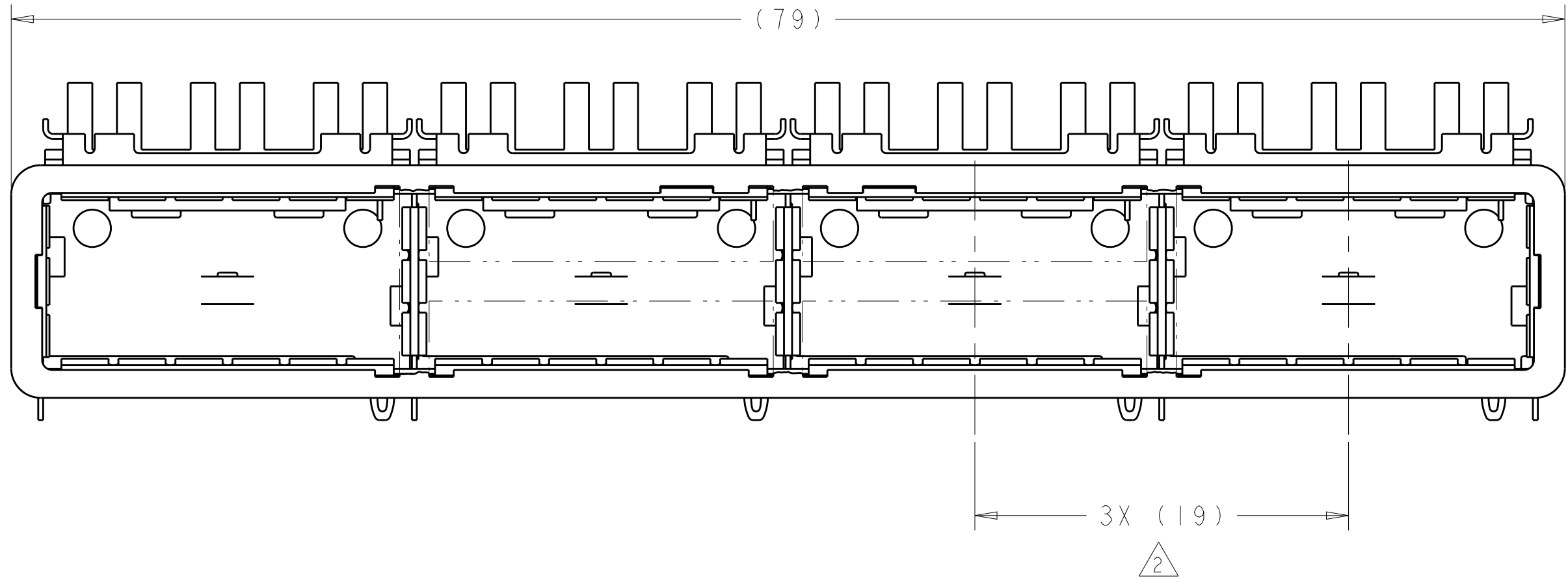
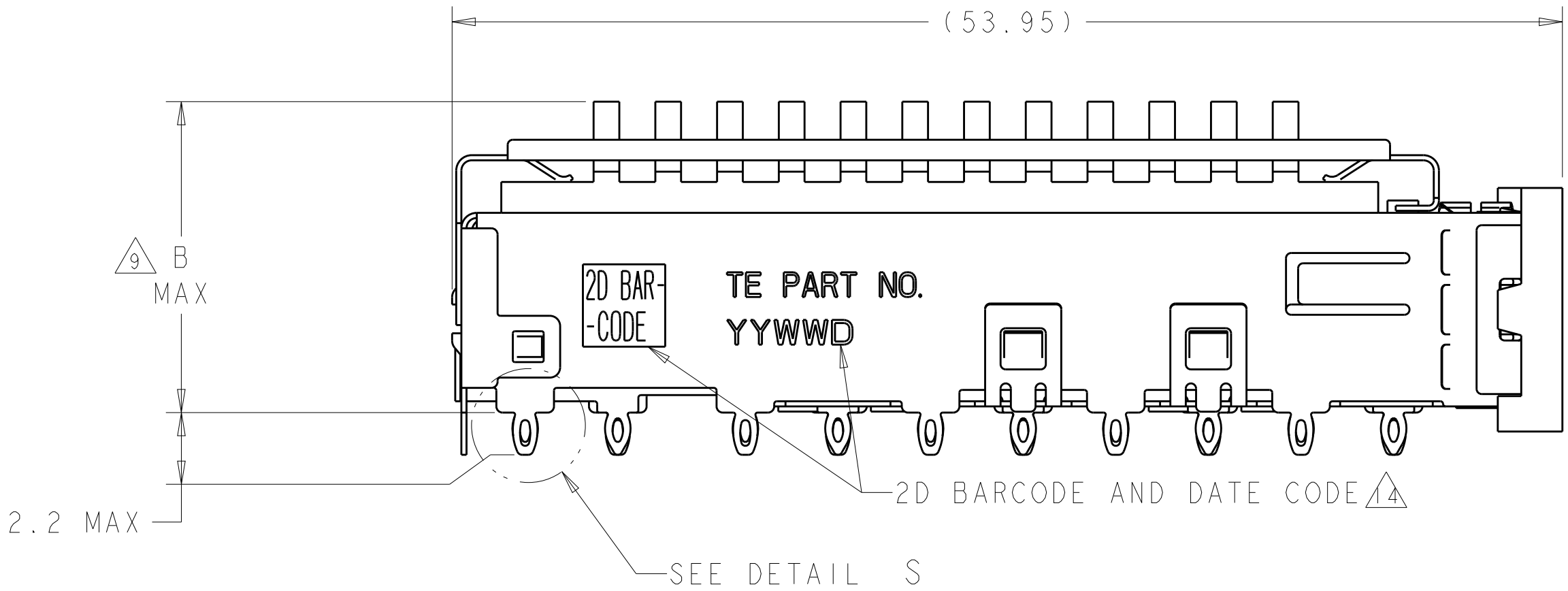


DETAIL S <sup>12</sup>  
SCALE 20:1

- <sup>1</sup> CAGE ASSEMBLY MATERIAL: NICKEL SILVER, 0.25 THICK  
HEAT SINK MATERIAL: ALUMINUM  
HEAT SINK CLIP MATERIAL: STAINLESS STEEL  
EMI SPRING MATERIAL: COPPER ALLOY  
FRONT FLANGE MATERIAL: ZINC ALLOY
- <sup>2</sup> PITCH BETWEEN PORTS OF ONE 1X4 CAGE ASSEMBLY.
- <sup>3</sup> SPACING BETWEEN CAGES ON THE SAME PC BOARD, TO BE SPECIFIED BY CUSTOMER, MUST COMPLY WITH MINIMUM DIMENSIONS SHOWN.
- <sup>4</sup> REFERENCE APPLICATION SPEC 114-13218 FOR RECOMMENDED DRILL HOLE DIAMETER AND PLATING THICKNESS.
- <sup>5</sup> DATUMS AND BASIC DIMENSIONS ESTABLISHED BY CUSTOMER.
- <sup>6</sup> DIMENSION C IS THE NOMINAL THICKNESS OF CUSTOMER SUPPLIED PC BOARD,  
SINGLE SIDED PC BOARD MINIMUM THICKNESS = 1.45mm  
DOUBLE SIDED PC BOARD MINIMUM THICKNESS = 2.2mm PER QSFP.
- <sup>7</sup> HEAT SINKS AND CLIPS SHIPPED ASSEMBLED TO CAGE ASSEMBLY. CAGE ASSEMBLY MAY BE PRESSED INTO THE PCB AS SHIPPED.
- <sup>8</sup> DATUM -A- IS TOP SURFACE OF PC BOARD.
- <sup>9</sup> DIMENSION APPLIES WITH MODULE INSERTED IN CAGE.
- <sup>10</sup> UNPLATED THRU HOLE.

- 11. MATES WITH QSFP MSA COMPATIBLE TRANSCEIVER.
- <sup>12</sup> SURFACE TRACES PERMITTED WITHIN THIS AREA EXCEPT WHERE CAGE STANDOFFS, SHOWN IN DETAIL S, CONTACT PC BOARD.
- <sup>13</sup> BASELINE FOR THESE DIMENSIONS IS THE CENTER OF COMPLIANT PIN HOLE.
- <sup>14</sup> 2D BARCODE AND DATE CODE (YYWWD) MARKED ON SIDE OF CAGE ASSEMBLY.
- <sup>15</sup> REFERENCE APP SPEC 114-13218 FOR GASKET THICKNESS CALCULATION.

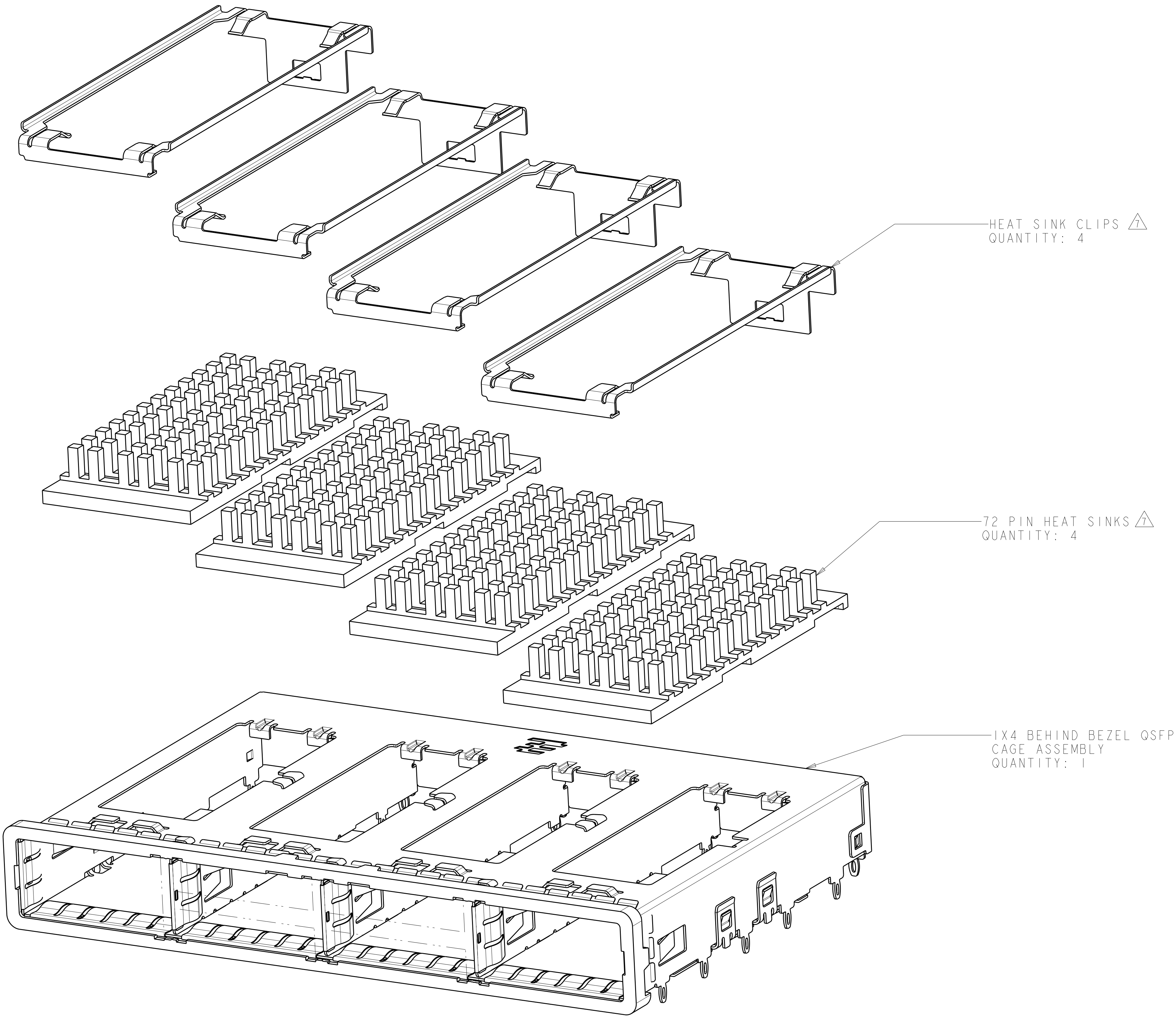
- <sup>16</sup> EMI SPRING FINISH: 2µm MINIMUM TIN  
FRONT FLANGE FINISH: 3µm MINIMUM TIN OVER 1.27µm MINIMUM NICKEL OVER 5.08µm MINIMUM COPPER.  
HEAT SINK FINISH: NICKEL.





23.0	NETWORKING	2007625-3
16.0	SAN	2007625-2
13.7	PCI	2007625-1
B	HEAT SINK PROFILE	PART NUMBER

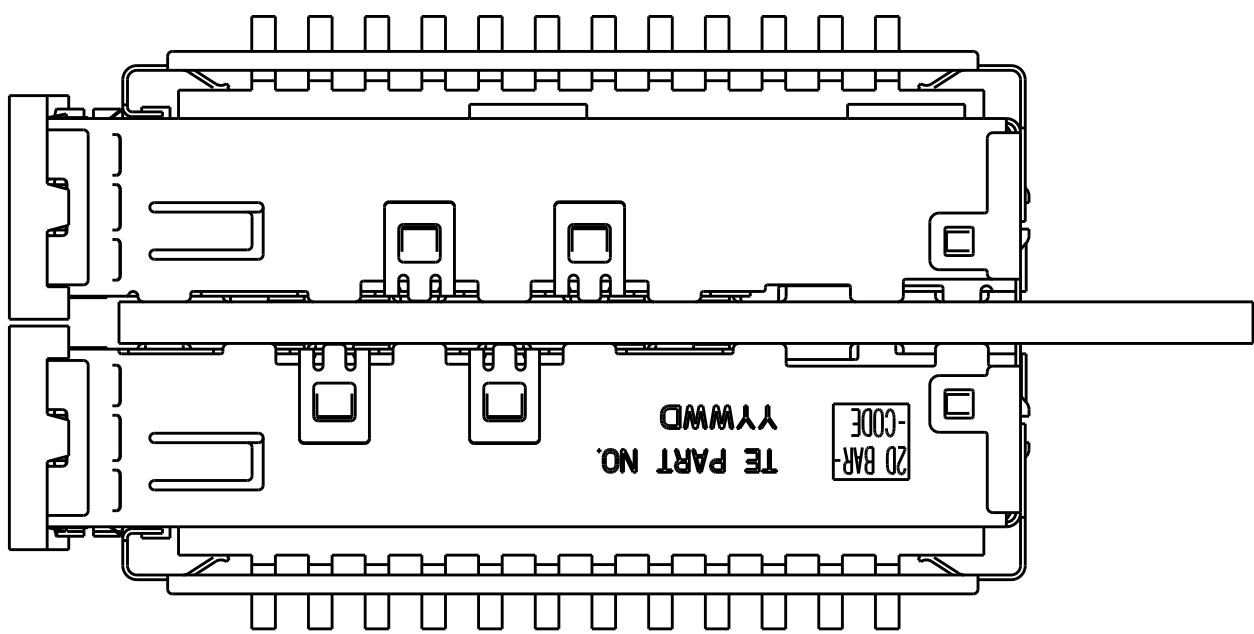
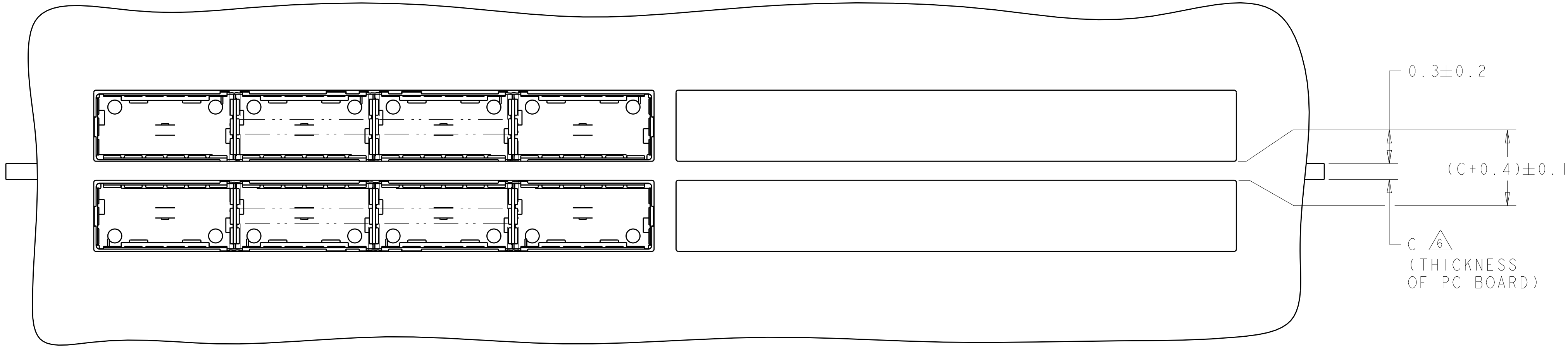
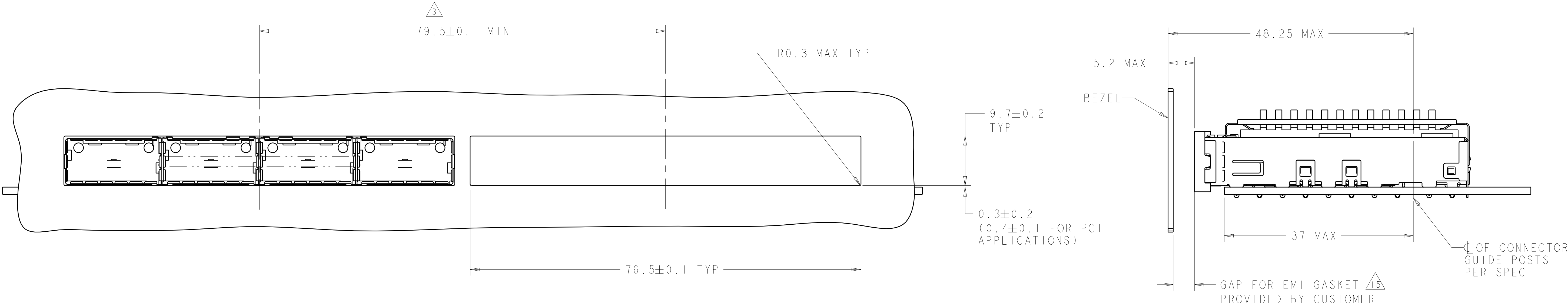
THIS DRAWING IS A CONTROLLED DOCUMENT.		DWN C. VALENTINE 09JUN2008	NAME 1X4 CAGE ASSEMBLY, BEHIND BEZEL, W/ HEAT SINKS, QSFP	
DIMENSIONS:		CHK E. BRIGHT 09JUN2008		
mm	TOLERANCES UNLESS OTHERWISE SPECIFIED:		APVD F. BRIGHT 09JUN2008	SIZE CAGE CODE DRAWING NO RESTRICTED TO
	0 PLC ±.1		PRODUCT SPEC	
	1 PLC ±0.1		108-2286	A100779C=2007625
	2 PLC ±.1		APPLICATION SPEC	
	3 PLC ±.1		114-13218	SCALE 4:1 SHEET 1 OF 5 REV F
	4 PLC ±.1		WEIGHT	
MATERIAL	ANGLES		CUSTOMER DRAWING	
	FINISH			



LOC	DIST	REVISIONS					
		P	LTR	DESCRIPTION	DATE	DWN	APVD
GP	00	-	-	SEE SHEET 1	-	-	-



THIS DRAWING IS A CONTROLLED DOCUMENT.		DWN	C. VALENTINE	09JUN2008	 TE Connectivity	
		CHK	E. BRIGHT	09JUN2008		
DIMENSIONS:		APVD	F. BRIGHT	09JUN2008	NAME 1X4 CAGE ASSEMBLY, BEHIND BEZEL, W/ HEAT SINKS, OSFP	
mm		PRODUCT SPEC 108-2286				
		APPLICATION SPEC			SIZE A100779C=2007625	
		114-13218				
		WEIGHT				
		CUSTOMER DRAWING				
MATERIAL		FINISH			SCALE 4:1	
					SHEET 2	
					OF 5	
					REV F	

LOC		DIST		REVISIONS					
GP		00		P	LTR	DESCRIPTION	DATE	DWN	APVD
				-		SEE SHEET 1	-	-	-



THIS DRAWING IS A CONTROLLED DOCUMENT.		DWN C. VALENTINE 09JUN2008	 TE Connectivity		NAME 1X4 CAGE ASSEMBLY, BEHIND BEZEL, W/ HEAT SINKS, QSPF
DIMENSIONS:		CHK E. BRIGHT 09JUN2008			
mm	TOLERANCES UNLESS OTHERWISE SPECIFIED:	APVD F. BRIGHT 09JUN2008	PRODUCT SPEC		
	0 PLC ±. 1 PLC ±0.1 2 PLC ±0.1 3 PLC ±. 4 PLC ±. ANGLES ±. FINISH	108-2286 APPLICATION SPEC	SIZE CAGE CODE DRAWING NO RESTRICTED TO		
MATERIAL	-	114-13218 WEIGHT	A 100779 C=2007625 -		
CUSTOMER DRAWING			SCALE 4:1	SHEET 3 OF 5	REV F

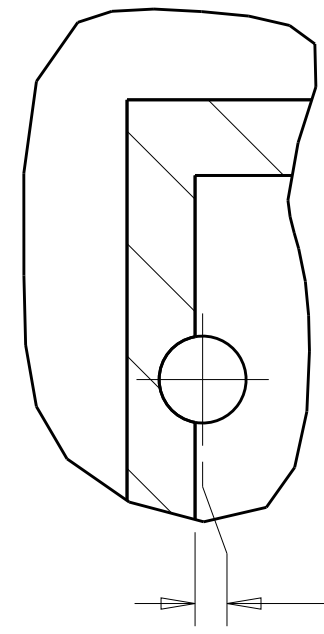
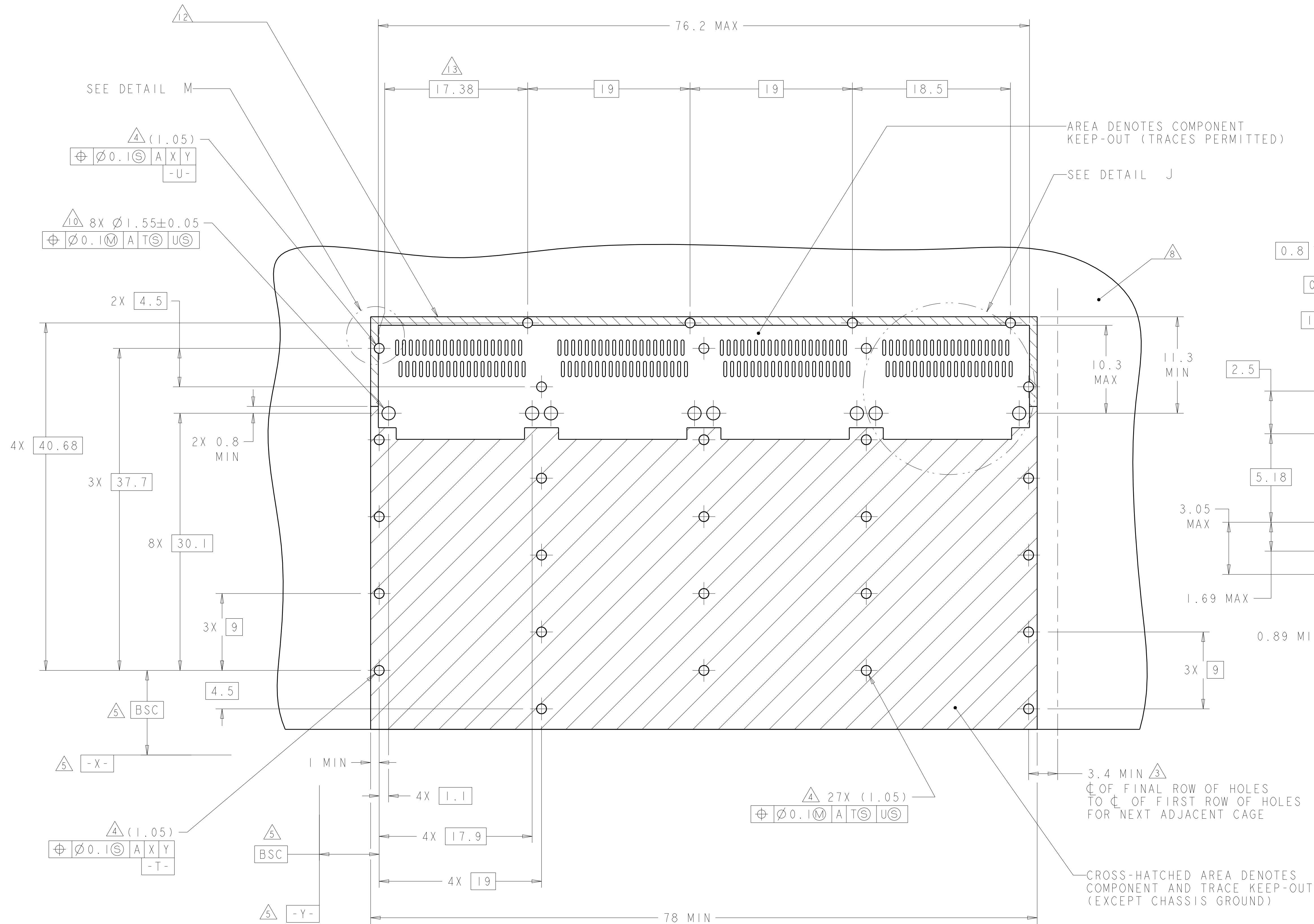
LOC		DIST		REVISIONS			
GP		00		REV	DESCRIPTION	DATE	OWN
				-	SEE SHEET 1	-	-

D

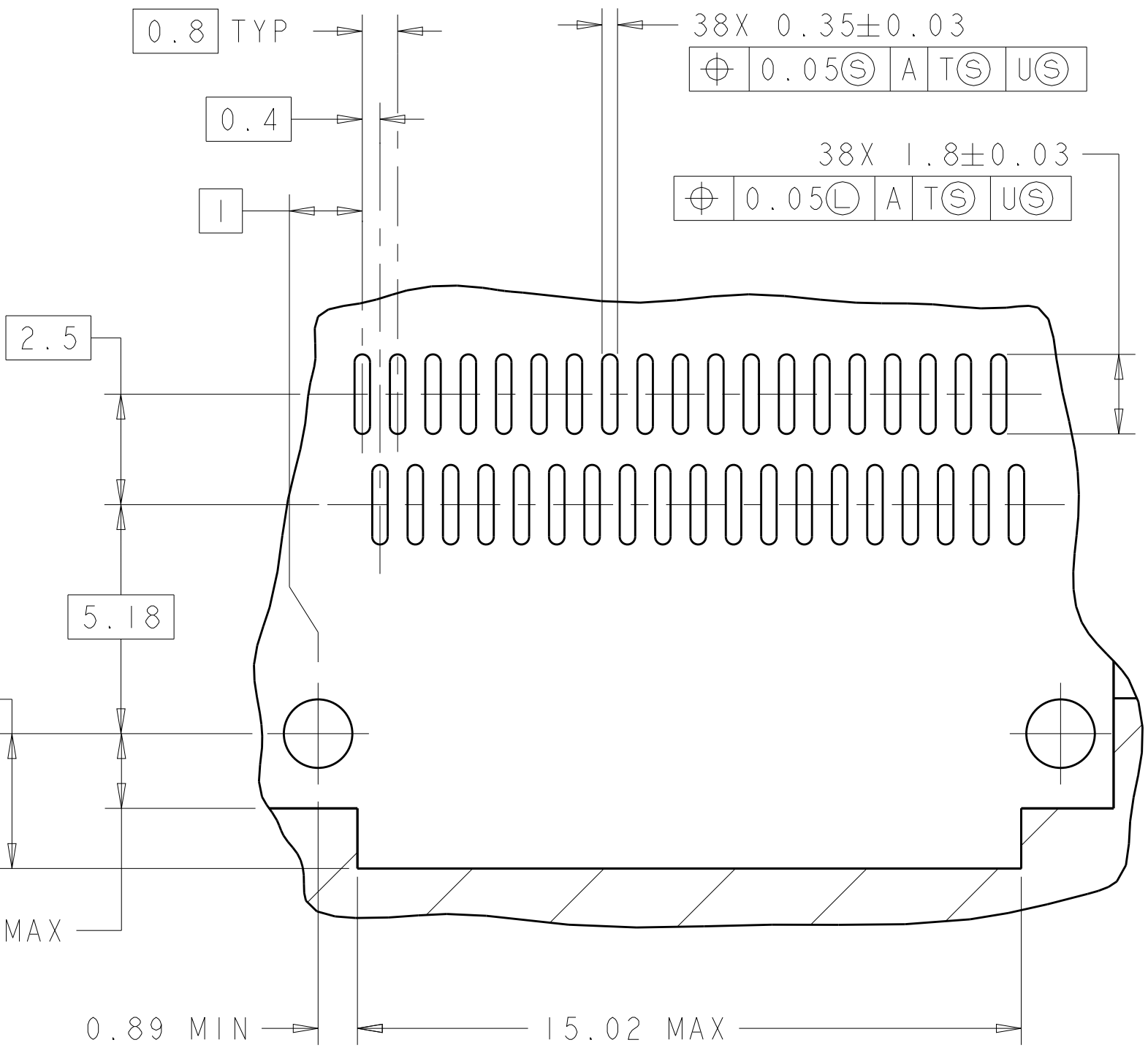
C

B

A



DETAIL M  
SCALE 10:1



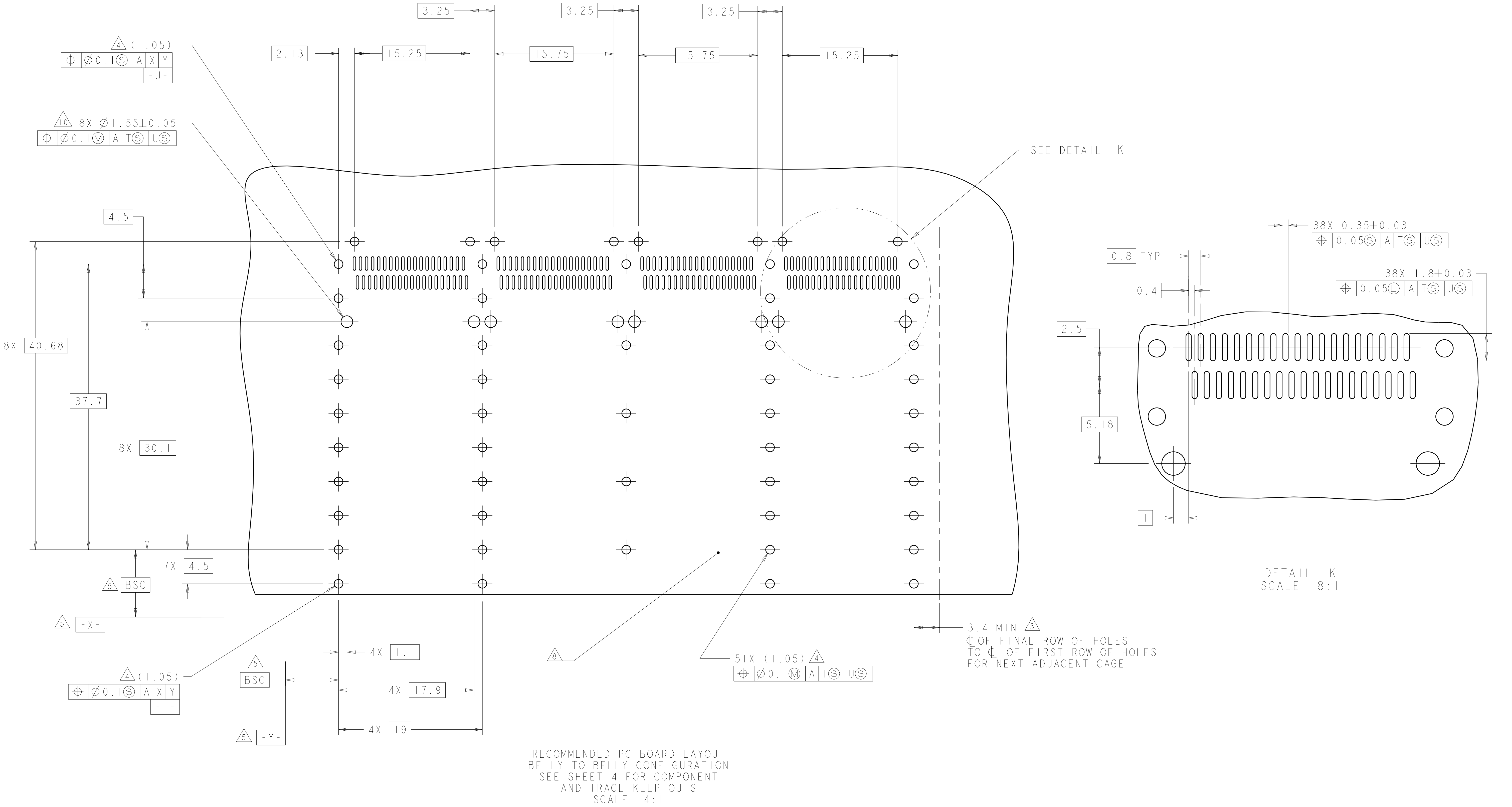
DETAIL J  
3 PLACES  
SCALE 8:1

RECOMMENDED PC BOARD LAYOUT  
SINGLE SIDE MOUNT CONFIGURATION  
SCALE 4:1

THIS PRODUCT HAS NOT COMPLETED VALIDATION/QUALIFICATION TESTING

THIS DRAWING IS A CONTROLLED DOCUMENT.		OWN C. VALENTINE CHK E. BRIGHT APVD F. BRIGHT	09JUN2008 09JUN2008 09JUN2008	TE Connectivity	
DIMENSIONS: mm		TOLERANCES UNLESS OTHERWISE SPECIFIED:		NAME 1X4 CAGE ASSEMBLY, BEHIND BEZEL, W/ HEAT SINKS, QSPF	
0 PLC ±0.1		1 PLC ±0.1		PRODUCT SPEC	
2 PLC ±0.1		3 PLC ±0.1		108-2286	
4 PLC ±0.1		ANGLES FINISH		APPLICATION SPEC	
MATERIAL		WEIGHT		114-13218	
		CUSTOMER DRAWING		A100779C=2007625	
		SCALE 4:1		SHEET 4 OF 5	
				REV F	

LOC	DIST	REVISIONS					
		P	LTR	DESCRIPTION	DATE	DWN	APVD
GP	00	-	-	SEE SHEET 1	-	-	-



THIS DRAWING IS A CONTROLLED DOCUMENT.		DWN C. VALENTINE CHK E. BRIGHT APVD F. BRIGHT	09JUN2008 09JUN2008 09JUN2008	TE Connectivity	
DIMENSIONS: mm		TOLERANCES UNLESS OTHERWISE SPECIFIED:		NAME 1X4 CAGE ASSEMBLY, BEHIND BEZEL, W/ HEAT SINKS, QSPF	
0 PLC $\pm .1$ 1 PLC $\pm 0.1$ 2 PLC $\pm 0.1$ 3 PLC $\pm .1$ 4 PLC $\pm .1$ ANGLES $\pm .1$ FINISH		PRODUCT SPEC 108-2286 APPLICATION SPEC 114-13218		SIZE A100779	
MATERIAL -		WEIGHT -		CAGE CODE C=2007625	
CUSTOMER DRAWING		SCALE 4:1		SHEET 5 OF 5	
				REV F	