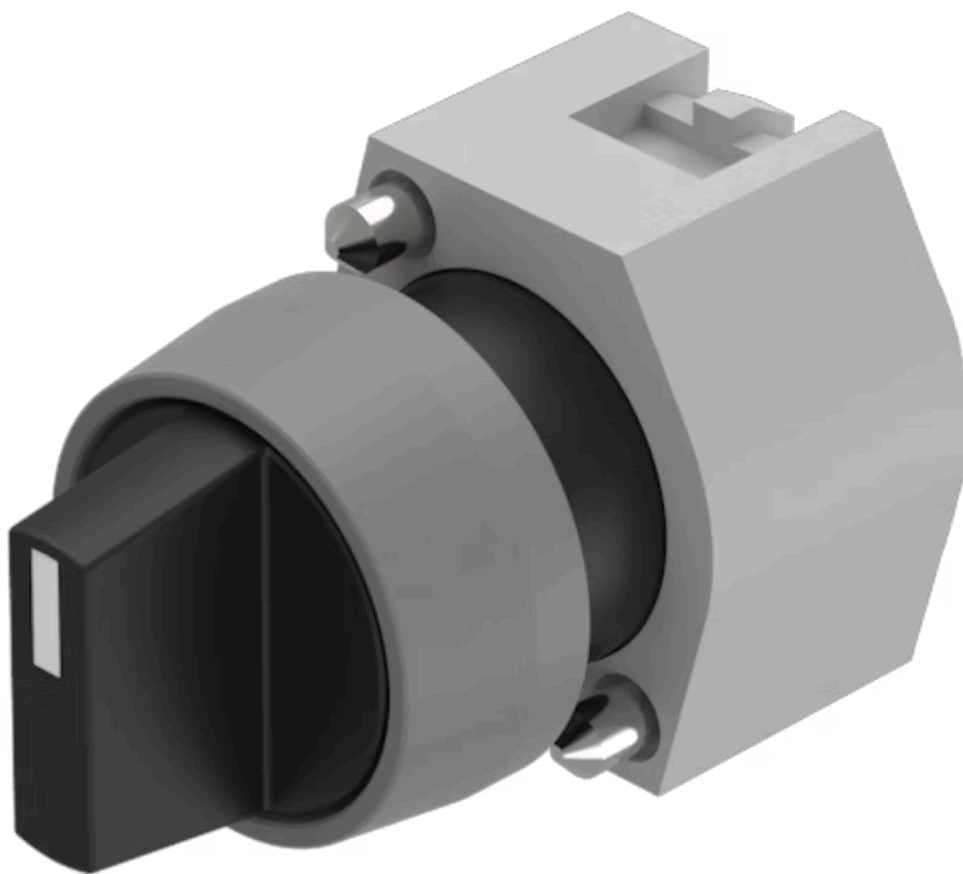


Actuator

704.402.0



<https://eao.com/p/704.402.0>

Your product:



704.402.0 Actuator

FRONT

Front bezel material:	Plastic
Front bezel colour:	Grey
Front dimension:	Ø 29 mm

MOUNTING

Design:	raised
---------	--------

OPERATING-/INDICATION PART

Lever material:	plastic
Lever shape:	short
Lever colour:	Black

ELECTRICAL CHARACTERISTICS

Standards:	The switches comply with the "Standards for low-voltage switching devices" DIN EN 60947-1
------------	---

MECHANICAL CHARACTERISTIC

Weight:	0.034 kg
Switching positions:	3 positions
Mechanical lifetime:	≤2.5 Mio. cycles of operation
Switching action:	Maintained - Rest - Maintained
Switching angle:	42° left / 42° right

AMBIENT CONDITION

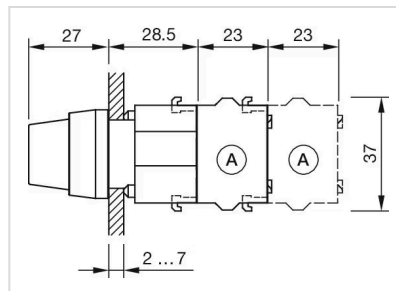
IP Protection:	IP65 front side
Storage temperature:	- 40 °C ... + 85 °C
Operating temperature:	- 40 °C ... + 55 °C

OTHER

Short Description:	Actuator, Ø 29 mm, non illuminative, Black, short, Grey, Plastic, Maintained - Rest - Maintained
max. number of switching elements:	3
Hints:	Max. 3 switching elements can be clipped on
Wiring diagrams:	

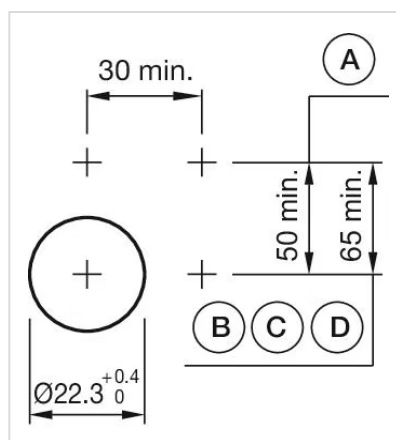


Dimension drawings:



A = Screw terminal

Mounting cut-outs:



A = Screw terminal
B = Push-in terminal (PIT)
C = Plug-in terminal 6.3 mm x 0.8 mm
D = Double plug-in terminal 6.3 mm x 0.8 mm

Switching positions:

