

****NOTE****
SEE PAGE 2 FOR BOARD LAYOUTS

CHARACTERISSTICS
MATERIALS

SHELL : BRASS
SHELL PLATING : NICKEL
NUT : BRASS
NUT PLATING : NICKEL
LATCH SLEEVE : BRASS
LATCH SLEEVE PLATING : NICKEL
CONTACTS : COPPER ALLOY
CONTACT PLATING : 7μ" GOLD PLATED OVER 196μ" NICKEL MIN.
INSULATOR : PPS (HIGH TEMPERATURE)
O-RING: SILICONE

MECHANICAL

DURABILITY: 5000 CYCLES
OPERATING TEMP. RANGE: -40° C ~ +200° C
PROCESS TEMPERATURE : 260°C FOR 5 SECONDS
MAX. TORQUE VALUE : 9.0 Nm [79.0 IN/lbs]
SHIELDING: 75dB @ 10MHz
40dB @ 1GHz

IP RATING: 67

822K R YY - 2 1 3 R 00 1

1 = GOLD FLASH

RoHS COMPLIANT

NICKEL/CHROME PLATED SHELL

BOARD MOUNT (PANEL MOUNT)

2 = FEMALE

OF POSITIONS (Ex. 002)
SEE CHART A

R = RIGHT ANGLE

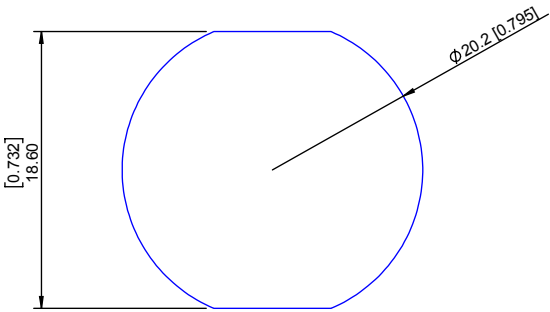
SERIES 16.00 [0.630]

CHART A

● = KEY LOCATION

VIEW FROM TERMINATION END

<p>2 POSITION 12 AMP MAX. PIN Ø = 2.00 [0.079]</p> <p>CONTACT RESISTANCE = 3 mΩ TEST VOLTAGE = 2100V WORKING VOLTAGE = 700V</p>	<p>3 POSITION 12 AMP MAX. PIN Ø = 1.60 [0.063]</p> <p>CONTACT RESISTANCE = 4 mΩ TEST VOLTAGE = 2400V WORKING VOLTAGE = 800V</p>	<p>4 POSITION 12 AMP MAX. PIN Ø = 1.30 [0.051]</p> <p>CONTACT RESISTANCE = 5 mΩ TEST VOLTAGE = 1850V WORKING VOLTAGE = 615V</p>	<p>6 POSITION 12 AMP MAX. PIN Ø = 1.30 [0.051]</p> <p>CONTACT RESISTANCE = 5 mΩ TEST VOLTAGE = 1350V WORKING VOLTAGE = 450V</p>
-------------------------------------------------------------------------------------------------------------------------------------------------	-------------------------------------------------------------------------------------------------------------------------------------------------	-------------------------------------------------------------------------------------------------------------------------------------------------	-------------------------------------------------------------------------------------------------------------------------------------------------



PANEL CUTOUT

TOLERANCE = +0.10, -0.0
[+0.004, -0.00]

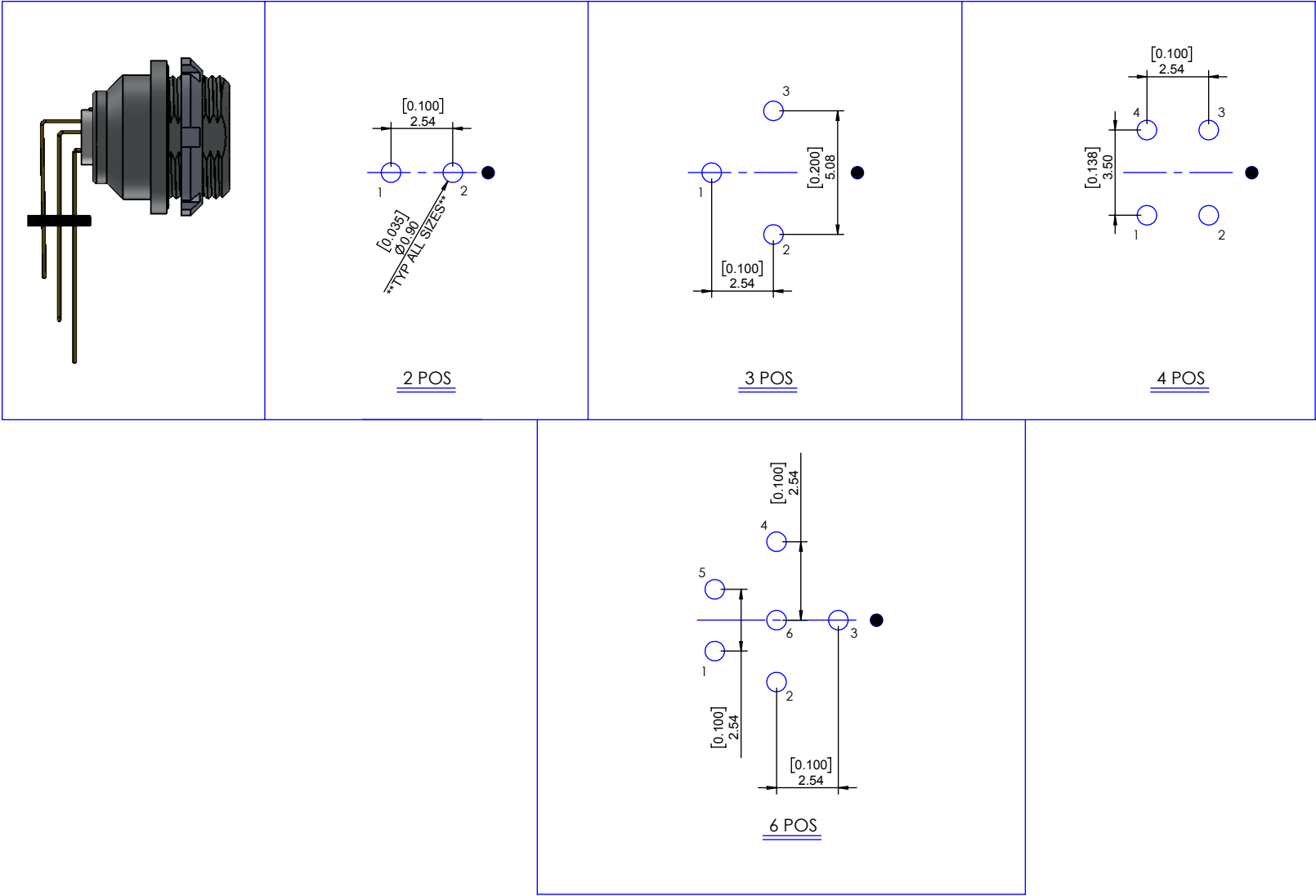
RoHS COMPLIANT

	THESE DRAWINGS AND SPECIFICATIONS ARE THE PROPERTY OF NorComp AND SHALL NOT BE REPRODUCED, COPIED OR USED AS THE BASIS FOR THE MANUFACTURE OR SALE OF APPARATUS WITHOUT WRITTEN PERMISSION.	NorComp	DRAWN: M. SIGMON	DATE: 03-01-16	SCALE: N.T.S.	SHEET 1	OF 2	REV: 3
						DWG NO. 822KRY-213R001		

BOARD LAYOUTS

NOTE : **HOLE DIAMETERS ARE TYPICAL ALL SIZES**

● = KEY LOCATION



RoHS COMPLIANT



THESE DRAWINGS AND SPECIFICATIONS ARE THE PROPERTY OF NorComp AND SHALL NOT BE REPRODUCED, COPIED OR USED AS THE BASIS FOR THE MANUFACTURE OR SALE OF APPARATUS WITHOUT WRITTEN PERMISSION.

NorComp

DRAWN: M. SIGMON	DATE: 03-01-16	SCALE: N.T.S.	SHEET 2 OF 2	REV: 3
			DWG NO. 822KRY-213R001	