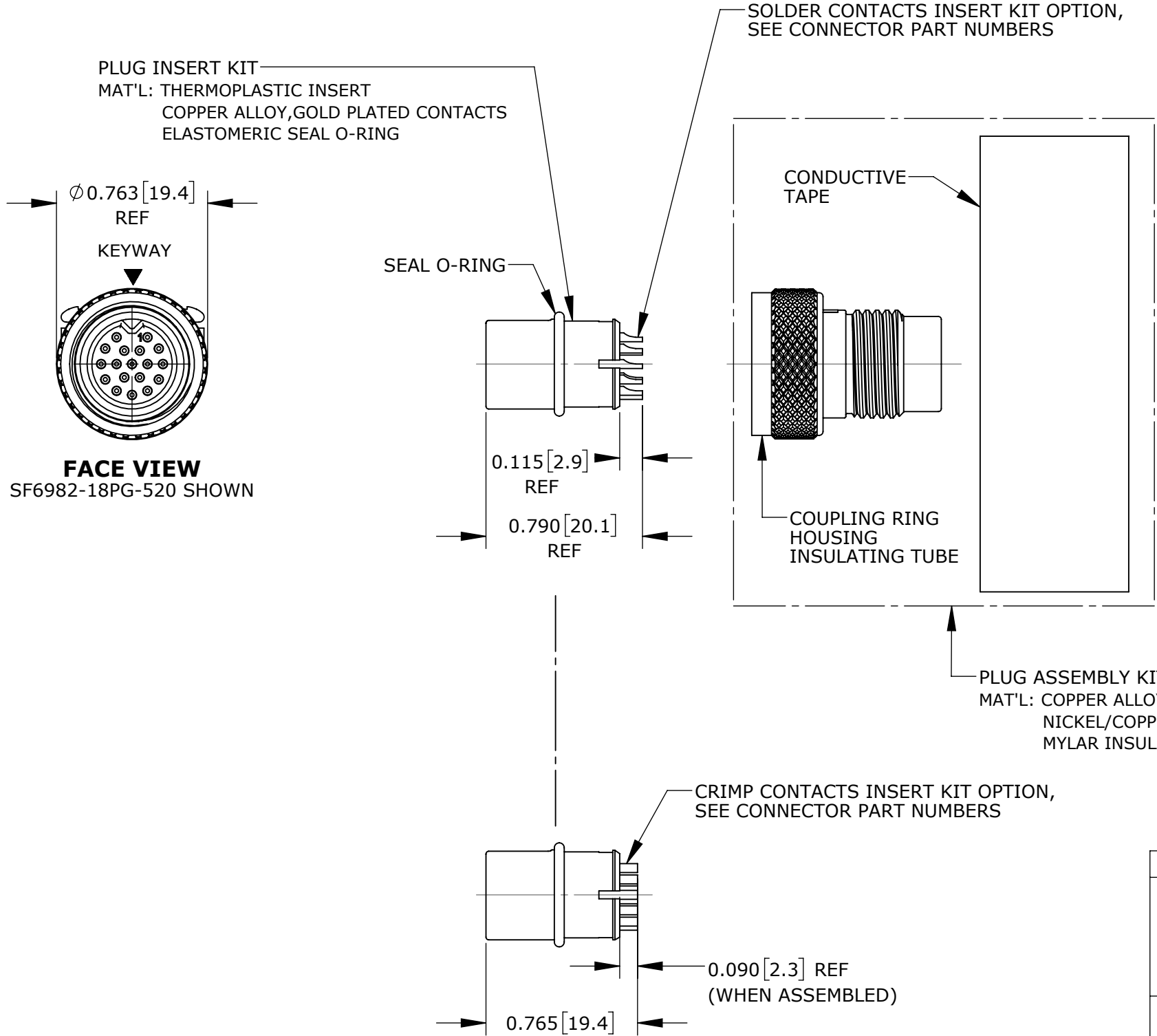


CUSTOMER PRINT

PART NUMBER: SF698X-XPG-5XX

MFG. ENG.	APPROVED BY:	DATE:	QA	APPROVED BY:	DATE:

- NOTES:
1. CRIMP CONTACTS SUPPLIED UNASSEMBLED.
  2. REFER TO DRAWING HPSFMISTD FOR CONTACT PATTERNS.
  3. DIMENSIONS ARE REFERENCE ONLY, IN INCHES [mm], WITHIN ±0.015 UNLESS OTHERWISE NOTED.



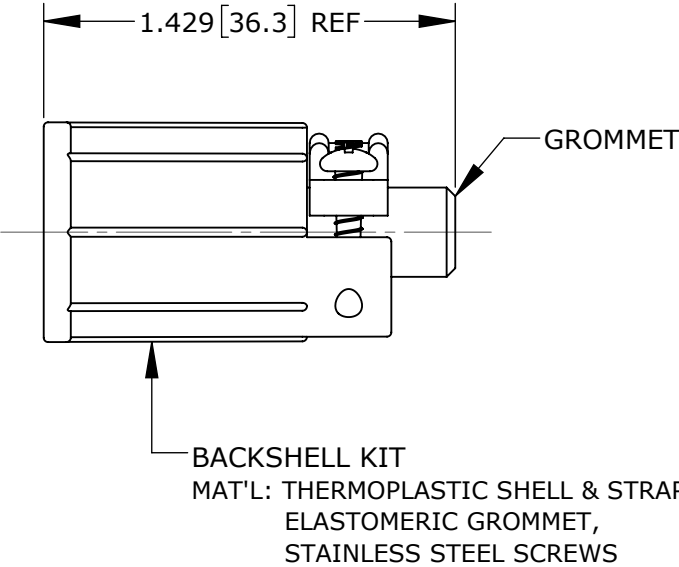
CABLE-END CONNECTOR PART NUMBERS:

S F 6 9 8 X - X P G - 5 X X

BACKSHELL KIT:  
520 = BACKSHELL WITH  
0.220 [5.6] GROMMET I.D.  
530 = BACKSHELL WITH  
0.330 [8.4] GROMMET I.D.


# OF CONTACTS: 9 - 18

CONTACTS STYLE:  
0 = CRIMP  
2 = SOLDER



CUSTOMER APPROVAL	
THIS DOCUMENT CONTAINS CONFIDENTIAL INFORMATION PROPRIETARY TO CONXALL CORPORATION. ANY REPRODUCTION, DISCLOSURE, OR USE OF THIS DOCUMENT /INFORMATION IS EXPRESSLY PROHIBITED UNLESS AUTHORIZED IN WRITING BY CONXALL CORPORATION.	
APPROVED BY:	_____
DATE:	_____

RoHS COMPLIANT

0A	PNK	2-8-18	DRAWING CREATED PER PDR17006				
REV.	INIT.	DATE	DESCRIPTION				
ALL INFORMATION ILLUSTRATED IS THE PROPERTY OF "CONXALL CORPORATION." UNAUTHORIZED DUPLICATION OR DISTRIBUTION OF THIS DOCUMENT IS PROHIBITED.			ORIG. DRAWN BY: PNK		DATE: 2-8-18	 601 E. WILDWOOD VILLA PARK, IL 60181	
			CHECKED BY:				
ALL UNITS ARE IN FEET, INCHES, FRACTION OF INCHES AND DECIMALS.			APPROVED BY:		TITLE: CABLE-END CONNECTOR 9-18 #26 PIN CONTACTS SHIELDED MINI-CON-X STANDARD PRODUCT		
UNLESS OTHERWISE SPECIFIED TOLERANCES: 3 PLACE DECIMALS ±.005 ANGLES ±1° FRACTIONS ±1/16							
			SCALE NTS	SIZE B	SHEET 1 OF 1		
▷ = CRITICAL CHARACTERISTIC FLAG PER SPEC. XXXX			FILE: SF698X-XPG-5XX_CD	DIRECTORY: SLW		PART NUMBER: SF698X-XPG-5XX	REV 0A