

## EMP Protector 3406.01.0003

### Description

Slim Line GDT technology

#### Benefits

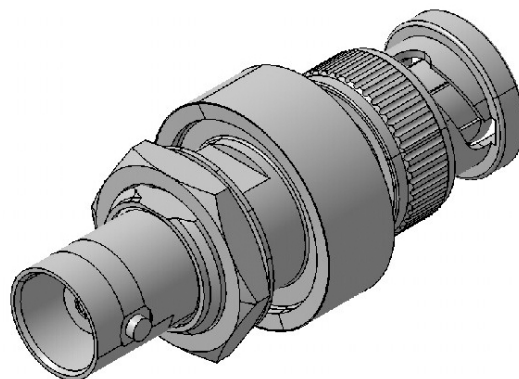
Broad-band design

DC continuity for remote powering

The protector can also be installed reversely

Fix installed GDT, static sparkover-voltage nom. 200 V

Compliant to IEC 61643-21



### Product Configuration

Main path connectors	Port 1: <u>unprotected</u> , BNC plug (male) - Port 2: <u>protected</u> , BNC jack (female)
Mounting and grounding	MH4 (bulkhead mounting), brk (bracket)
Side of bulkhead	protected side

### Technical Data

#### Electrical Data

Impedance	50 $\Omega$
Frequency range	0 - 4000 MHz
Return loss	$\geq 20$ dB
Insertion loss	$\leq 0.2$ dB
RF CW power	$\leq 60$ W
PIM 3rd order	not specified

Surge current handling capability	10 single / 5 multiple kA (test pulse 8/20 $\mu$ s)
Residual pulse energy	250 $\mu$ J typically (test pulse 4 kV 1.2/50 $\mu$ s / 2 kA 8/20 $\mu$ s) main path - protected side

#### Mechanical Data

Number of matings	500
Weight	45 g

#### Environmental Data

Operating temperature	-40 °C to +85 °C
Waterproof degree	IP20 (according to IEC 60529, data refer to the coupled state)
2011/65/EU (RoHS - including 2015/863 and 2017/2102)	compliant acc. Annex III

#### Material Data

Piece Parts	Material	Surface Plating
Housing	Brass	Silver / Gold Plating
Port 1 center contact	Brass	Gold Plating (without Nickel underplating)
Port 2 center contact	Copper Beryllium Alloy	Gold Plating (without Nickel underplating)

### Related Documents

Outline drawing	DOU-00004250
Mounting instruction	DOC-0000176104