

- NOTES:
- 1. CRIMP CONTACTS SUPPLIED UNASSEMBLED.
 - 2. REFER TO DRAWING HPSFMISTD FOR CONTACT PATTERNS.
 - 3. DIMENSIONS ARE REFERENCE ONLY, IN INCHES [mm], WITHIN ±0.015 UNLESS OTHERWISE NOTED.

CABLE-END CONNECTOR PART NUMBERS:

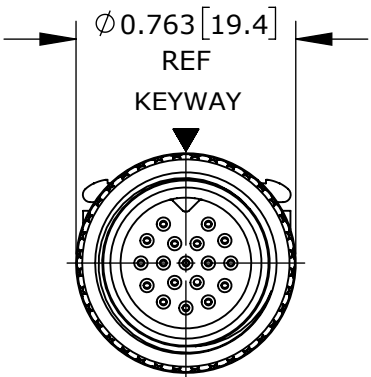
S F 6 9 8 X - X S G - 5XX

BACKSHELL KIT:
520 = BACKSHELL WITH
0.220 [5.6] GROMMET I.D.
530 = BACKSHELL WITH
0.330 [8.4] GROMMET I.D.

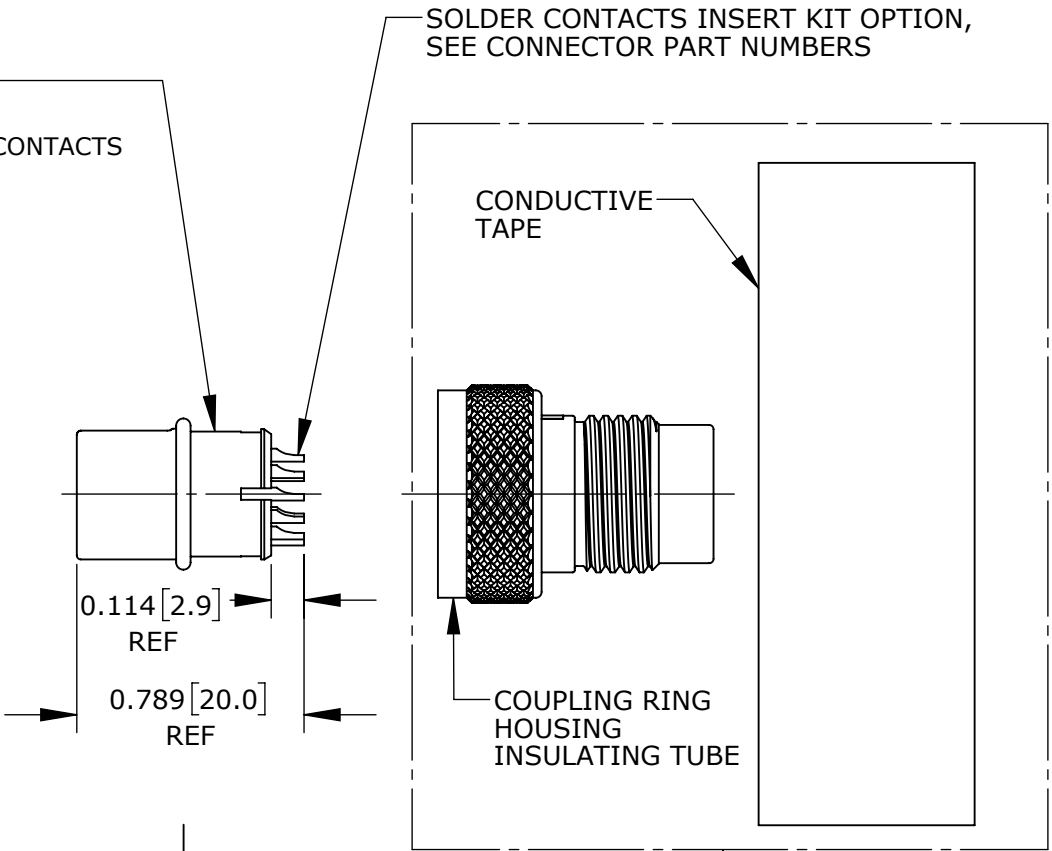
OF CONTACTS: 9 - 18

CONTACTS STYLE:
0 = CRIMP
2 = SOLDER

PLUG INSERT KIT
MAT'L: THERMOPLASTIC INSERT
COPPER ALLOY, GOLD PLATED CONTACTS
ELASTOMERIC SEAL O-RING



FACE VIEW
SF6982-18SG-520 SHOWN



SOLDER CONTACTS INSERT KIT OPTION,
SEE CONNECTOR PART NUMBERS

CONDUCTIVE
TAPE

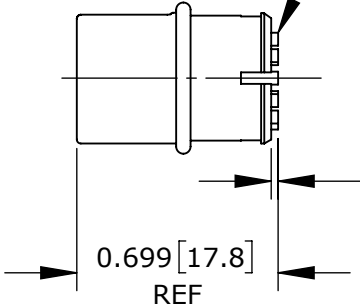
COUPLING RING
HOUSING
INSULATING TUBE

0.114 [2.9]
REF

0.789 [20.0]
REF

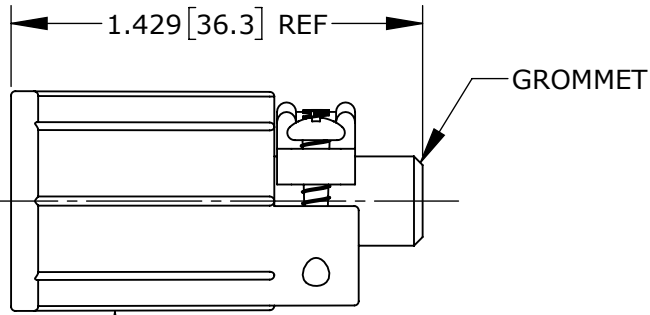
PLUG ASSEMBLY KIT
MAT'L: COPPER ALLOY, NICKEL PLATED HOUSING & COUPLING RING,
NICKEL/COPPER/POLYESTER FABRIC WITH CONDUCTIVE ADHESIVE TAPE,
MYLAR INSULATING TUBE

CRIMP CONTACTS INSERT KIT OPTION,
SEE CONNECTOR PART NUMBERS

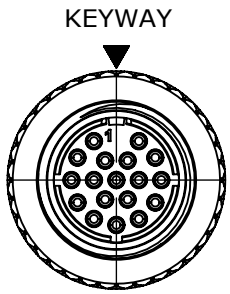


0.024 [0.6] REF
(WHEN ASSEMBLED)

0.699 [17.8]
REF



BACKSHELL KIT
MAT'L: THERMOPLASTIC SHELL & STRAP,
ELASTOMERIC GROMMET,
STAINLESS STEEL SCREWS




WIRING VIEW
SF6982-18SG-520 SHOWN
WITHOUT BACKSHELL

CUSTOMER APPROVAL

THIS DOCUMENT CONTAINS CONFIDENTIAL
INFORMATION PROPRIETARY TO CONXALL
CORPORATION. ANY REPRODUCTION,
DISCLOSURE, OR USE OF THIS
DOCUMENT /INFORMATION IS EXPRESSLY
PROHIBITED UNLESS AUTHORIZED IN
WRITING BY CONXALL CORPORATION.

APPROVED BY: _____
DATE: _____

RoHS COMPLIANT

0A	PNK	2-8-18	DRAWING CREATED PER PDR17006			
REV.	INIT.	DATE	DESCRIPTION			
ALL INFORMATION ILLUSTRATED IS THE PROPERTY OF "CONXALL CORPORATION." UNAUTHORIZED DUPLICATION OR DISTRIBUTION OF THIS DOCUMENT IS PROHIBITED.			ORIG. DRAWN BY: PNK	DATE: 2-8-18	 601 E. WILDWOOD VILLA PARK, IL 60181	
			CHECKED BY:			
ALL UNITS ARE IN FEET, INCHES, FRACTION OF INCHES AND DECIMALS. UNLESS OTHERWISE SPECIFIED TOLERANCES: 3 PLACE DECIMALS ±.005 ANGLES ±1° FRACTIONS ±1/16 ▽ = CRITICAL CHARACTERISTIC FLAG PER SPEC. XXXX			APPROVED BY:		TITLE: CABLE-END CONNECTOR 9-18 #26 SOCKET CONTACTS SHIELDED MINI-CON-X STANDARD PRODUCT	
			SCALE NTS	SIZE B	SHEET 1 OF 1	CUSTOMER:
			FILE: SF698X-XSG-5XX_CD		DIRECTORY: SLW	PART NUMBER: SF698X-XSG-5XX
			REV 0A			