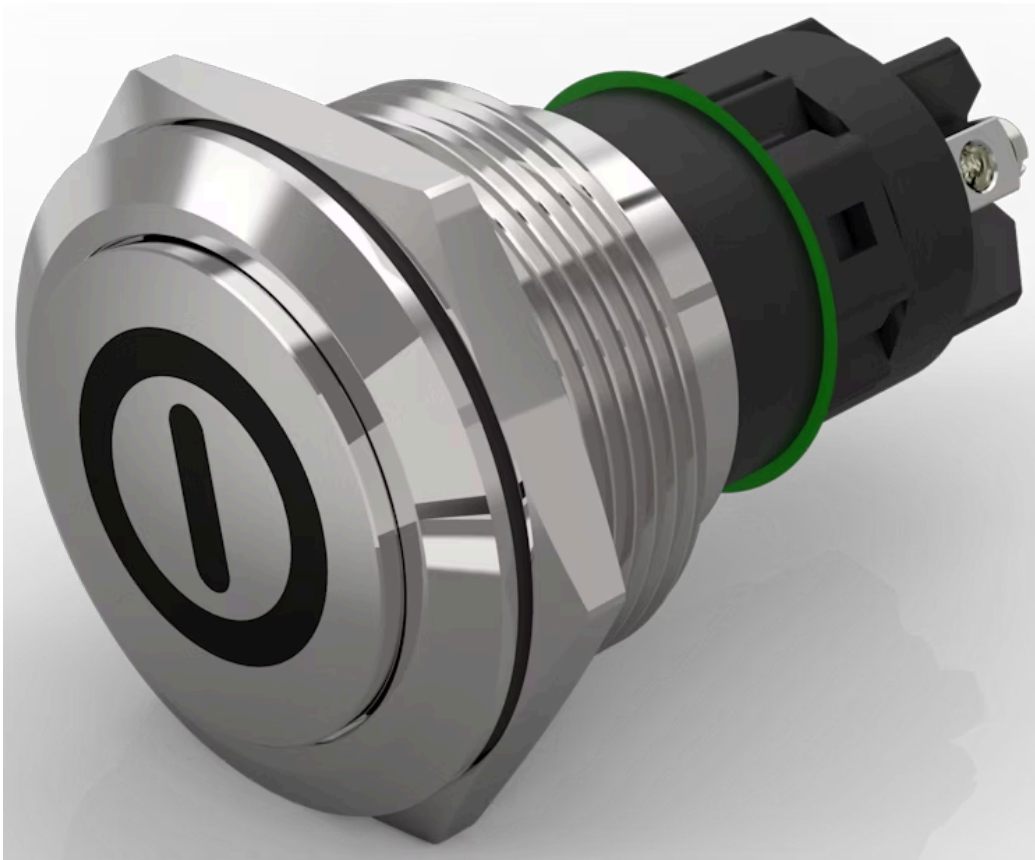


## Pushbutton Ø 22 mm silver contact

82-6162.2000.B001



<https://eao.com/p/82-6162.2000.B001>

Your product:



82-6162.2000.B001  
Pushbutton Ø 22 mm silver contact

FRONT

Front bezel material: Stainless steel

MOUNTING

Mounting cut-out: Ø 22 mm

OPERATING-/INDICATION PART

Lens colour: Silver

Lens illumination: non illuminative

Lens material: Stainless steel

Lens shape: raised

Lens optics: opaque

ELECTRICAL CHARACTERISTICS

Rated Operational Voltage Ue: 250 VAC

Switching voltage and switching current:	according to IEC 60947-5-1 (Silver contacts)	
	Service categorie AC-15	
	Voltage	Current
	24 VAC	1 A
	35 VAC	1 A (M12 versio
	110 VAC	1 A
	220 VAC	0.5 A
	Switch rating DC service categorie DC-13 (Silver contacts)	
	Voltage	Current
	24 VDC	0.7 A
	35 VDC	0.5 A (M12 vers
	110 VDC	0.2 A
	220 VDC	0.1 A

according to UL 508 (Silver contacts)

$\cos\phi$  0,75 ... 0,8

Voltage

120 VAC

240 VAC

24 VAC

Current

5 A

3 A

1 A

<b>Thermal current I<sub>th</sub>:</b>	5 A
<b>Electric strength:</b>	1500 VAC, 50 Hz 1 minute between life terminals and ground
<b>Pollution degree:</b>	2, according to EN IEC 60947-1
<b>Contacts:</b>	1 C
<b>Rated insulation voltage U<sub>i</sub>:</b>	250 V
<b>Electrical lifetime:</b>	50 000 cycles of operation

### MECHANICAL CHARACTERISTIC

<b>Switching action:</b>	Maintained
<b>Contact material:</b>	Silver
<b>Tightening torque:</b>	0.5 ... 0.6 Nm, Screw terminal 0.1 Nm
<b>Mechanical lifetime:</b>	500 000 cycles of operation
<b>Terminal:</b>	Screw terminal
<b>Operating force:</b>	4 N ... 7 N
<b>Weight:</b>	0.02 kg
<b>Switching system:</b>	Snap-action switching element
<b>Operating Travel:</b>	ca. 3 mm

### AMBIENT CONDITION

<b>Storage temperature:</b>	– 40 °C ... + 80 °C
<b>Vibration resistance:</b>	10 ... 500 Hz, amplitude 1.5 mm p-p according to IEC 60068-2-6
<b>Operating temperature:</b>	– 30 °C ... + 70 °C
<b>Shock resistance:</b>	Max. 500 m / s <sup>2</sup> as per IEC 60068-2-27
<b>Climate resistance:</b>	Damp heat, 21 days according to IEC 60512-11

### CERTIFICATE

<b>Approbations:</b>	CB, CCC, C UL, UL
<b>Conformities:</b>	CE, 2011 / 65 / EC (RoHS), 2014 / 35 / EU (LVD)

## OTHER

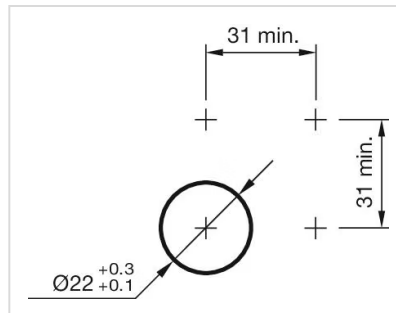
### Short Description:

Pushbutton Ø 22 mm silver contact, Maintained, 1 C, Screw terminal, Stainless steel, ON/OFF, Silver

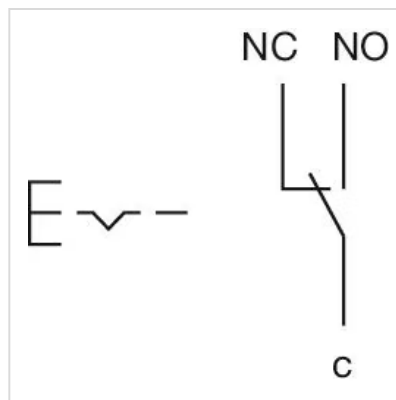
### Symbol:

ON/OFF

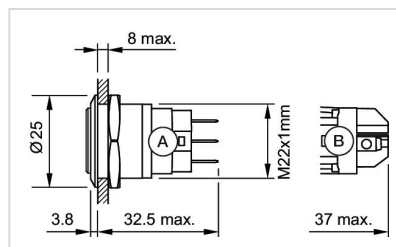
### Mounting cut-outs:



### Wiring diagrams:



### Dimension drawings:



### Component layouts:

