

Pushbutton, illuminated pushbutton with connector M12, Ø 22 mm, stainless steel 316L

82-6657.1134



<https://eao.com/p/82-6657.1134>

Your product:

---



82-6657.1134

Pushbutton, illuminated pushbutton with connector M12, Ø 22 mm, stainless steel 316L

#### FRONT

Front form:	round
Front bezel material:	Stainless steel 316L

#### MOUNTING

Mounting cut-out:	Ø 22 mm
-------------------	---------

#### OPERATING-/INDICATION PART

Lens illumination:	illuminative
Lens colour:	Silver
Shape of illumination:	Ring (Tritan)
Lens shape:	flush
Lens material:	Stainless steel 316L
Illumination colour:	Green
Lens optics:	opaque

#### ELECTRICAL CHARACTERISTICS

Electrical lifetime:	50 000 cycles of operation
Electric strength:	1500 VAC, 50 Hz 1 minute between life terminals and ground
Operating voltage:	24 V DC (LED)
Rated insulation voltage Ui:	250 V
Pollution degree:	2, according to EN IEC 60947-1
Rated Operational Voltage Ue:	250 VAC

**Thermal current I<sub>th</sub>:** 5 A

## **MECHANICAL CHARACTERISTIC**

**Mechanical lifetime:** 1 Mio. cycles of operation

**Switching system:** Snap-action switching element

**Tightening torque:** 0.5 ... 0.6 Nm

**Switching action:** Momentary

**Weight:** 0.043 kg

**Operating Travel:** ca. 3 mm

**Operating force:** 4 N ... 7 N

**Terminal:** Connector M12 (5 pins)

## **AMBIENT CONDITION**

**Operating temperature:** – 30 °C ... + 70 °C

**IP front protection:** IP65, IP67

**Shock resistance:** Max. 500 m / s<sup>2</sup> as per IEC 60068-2-27

**Vibration resistance:** 10 ... 500 Hz, amplitude 1.5 mm p-p according to IEC 60068-2-6

**Climate resistance:** Damp heat, 21 days according to IEC 60512-11

**Storage temperature:** – 40 °C ... + 80 °C

## **CERTIFICATE**

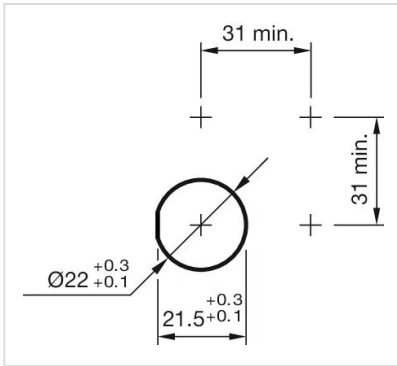
**Conformities:** CE, 2011 / 65 / EC (RoHS), 2014 / 35 / EU (LVD)

## **OTHER**

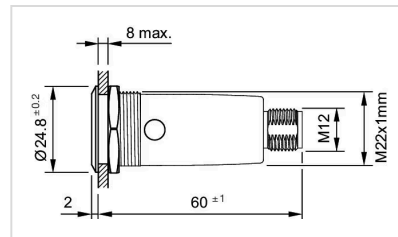
**Short Description:** Pushbutton, illuminated pushbutton with connector M12, Ø 22 mm, stainless steel 316L, Momentary, 35 V AC/DC @ 0,6 A, 24 V DC (LED), Connector M12 (5 pins), round, Stainless steel 316L, Green, Silver

**Kind of illumination:** Single-LED

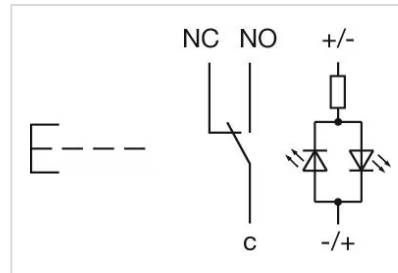
**Mounting cut-outs:**



#### Dimension drawings:



#### Wiring diagrams:



#### Component layouts:

