

TABLE I

SHELL SIZE	A THREAD CLASS 2B	B DIA MAX	MAX ENTRY
08	7/16-28 UNEF	.77	32
10	9/16-24 UNEF	.94	33
12	3/4-20 UNEF	1.06	34
14	13/16-20 UNEF	1.17	35
16	15/16-20 UNEF	1.27	06
18	1 1/16-18 UNEF	1.40	07
20	1 3/16-18 UNEF	1.53	08
22	1 5/16-18 UNEF	1.62	09
24	1 7/16-18 UNEF	1.75	10

TABLE II

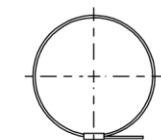
SYM	FINISH DESCRIPTION
B	CADMIUM PLATE/OLIVE DRAB
M	ELECTROLESS NICKEL
N	CADMIUM PLATE/OLIVE DRAB OVER NICKEL PLATE
NF	CAD/O. D. OVER ELECTROLESS NICKEL (500 HOUR SALT SPRAY)

REVISIONS

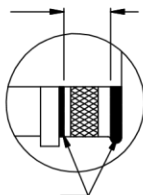
SYM.	DESCRIPTION	DATE	APPROVED
A	RELEASED	03/20/09	MAG
B	REVISED PER DCN 32000	03/26/09	MAG
C	REVISED PER DCN 36192	07/29/10	SAC

TABLE III

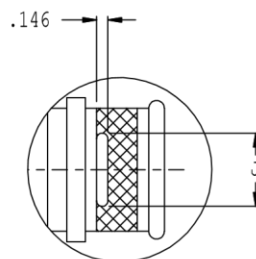
DASH NO	J	K	L ±.031	M	T
01	.125	.125	.250	.312	770-003S111
31	.170	.188	.312	.375	770-003S111
02	.170	.250	.375	.438	770-003S112
32	.170	.312	.438	.500	770-003S112
03	.250	.375	.500	.562	770-003S112
33	.250	.438	.562	.625	770-001S104
04	.250	.500	.625	.687	770-001S104
34	.250	.562	.688	.750	770-001S104
05	.500	.625	.750	.812	770-001S104
35	.500	.688	.812	.875	770-001S104
06	.500	.750	.875	.938	770-001S105
36	.500	.812	.938	1.000	770-001S105
07	.500	.875	1.000	1.062	770-001S105
37	.500	.938	1.062	1.125	770-001S105
08	.500	1.000	1.125	1.188	770-001S106
38	.500	1.062	1.188	1.250	770-001S106
09	.500	1.125	1.250	1.312	770-001S107
10	.750	1.250	1.375	1.438	770-001S107

BAND OPTION  
(K OPTION SHOWN)

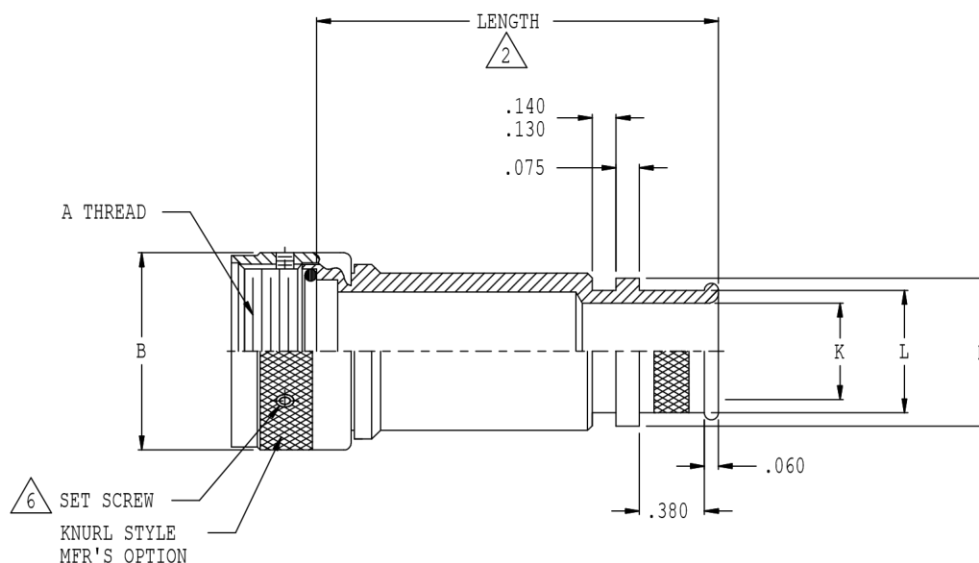
TERMINATION AREA  
FREE OF CADMIUM.  
KNURL OR RIDGES  
MFR'S OPTION



P OPTION  
POLYSULFIDE STRIPES  
SEE PART NUMBER  
DEVELOPMENT



S OPTION  
SEE PART NUMBER  
DEVELOPMENT



THIS COPYRIGHTED DOCUMENT IS THE PROPERTY OF GLENAIR, INC. AND IS FURNISHED ON THE CONDITION THAT IT IS NOT TO BE DISCLOSED, REPRODUCED IN WHOLE OR IN PART, OR USED TO SOLICIT QUOTATIONS FROM COMPETITIVE SOURCES, OR USED FOR MANUFACTURE BY ANYONE OTHER THAN GLENAIR, INC. WITHOUT WRITTEN PERMISSION FROM GLENAIR, INC. THE INFORMATION HEREIN HAS BEEN DEVELOPED AT GLENAIR'S EXPENSE AND MAY BE USED FOR ENGINEERING EVALUATION AND INCORPORATION INTO TECHNICAL SPECIFICATIONS AND OTHER DOCUMENTS WHICH SPECIFY PROCUREMENT OF PRODUCTS FROM GLENAIR, INC.

UNLESS OTHERWISE SPECIFIED

DIMENSIONS ARE IN INCHES  
TOLERANCES:

FRACTIONS ± 1/16  
DECIMALS .XX ±.03  
.XXX ±.015  
ANGLES ± 2°

DO NOT SCALE THIS DRAWING

B/F 98-6860 P/C 44

DRAWN M. GOMEZ 03/20/09  
CHECK T ROTHBAUER 03/20/09  
ENGR T ROTHBAUER 03/20/09

*R. R. R.*  
APPROVED

APPROVED

RELEASE DATE  
ORIGINAL  
RELEASE DATE

NON REPAIRABLE COMMERCIAL ITEM

**GLENAIR, INC.**

CAD 2008

1211 AIR WAY - GLENDALE - CALIFORNIA 91201

BACKSHELL, RFI/EMI  
BANDING



CODE IDENT. NO.

06324

SIZE

C

440ES030

REV.

C

SCALE N/A

WEIGHT

N/A

SHEET 1 OF 2

## REVISIONS

SEE SHEET 1

## PART NUMBER DEVELOPMENT

EXAMPLE: 440 E S 030 M 20 35 - 8 B P T S

PRODUCT SERIES ————

CONNECTOR DESIGNATOR,  
E = MIL-DTL-26500 ————

ANGULAR FUNCTION,  
S = STRAIGHT ————

BASIC NO ————

FINISH SYMBOL, TABLE II ————

SHELL SIZE, TABLE I ————

ENTRY SIZE, TABLE III ————

2 LENGTH IN 1/2 INCH INCREMENTS (eg...8 = 4.0 INCHES) ————

5 B = BAND ————  
K = PRECOILED (OMIT IF NOT REQUIRED) ————

POLYSULFIDE (OMIT IF NOT REQ'D) ————

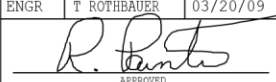
SHRINK BOOT (OMIT IF NOT REQ'D) ————  
SEE TABLE III

SLOT ————  
(OMIT IF NOT REQ'D)

## NOTES:

- ASSEMBLY IDENTIFIED WITH MANUFACTURER'S NAME AND P/N, SPACE PERMITTING.
- 2 STANDARD MINIMUM LENGTH IS 1.5 INCHES, FOR SHORTER LENGTH CONSULT FACTORY
- FOR EFFECTIVE GROUNDING, CONNECTOR WITH CONDUCTIVE FINISH SHOULD BE USED
- GLENAIR 600 SERIES BACKSHELL ASSEMBLY TOOLS ARE RECOMMENDED FOR ASSEMBLY AND INSTALLATION
- 5 BACKSHELLS SUPPLIED WITH 600-052 BAND
- 6 BACKSHELL SUPPLIED WITH ONE SET SCREW. BACKSHELL COUPLING RING SHALL CONTAIN THREE SET SCREW HOLES, EQUALLY SPACED
- MATERIAL/FINISH:  
ADAPTER, COUPLING NUT - AL ALLOY/SEE TABLE II  
O-RING - SILICONE/NA  
HARDWARE - CRES/PASSIVATED

THIS COPYRIGHTED DOCUMENT IS THE PROPERTY OF GLENAIR, INC. AND IS FURNISHED ON THE CONDITION THAT IT IS NOT TO BE DISCLOSED, REPRODUCED IN WHOLE OR IN PART, OR USED TO SOLICIT QUOTATIONS FROM COMPETITIVE SOURCES, OR USED FOR MANUFACTURE BY ANYONE OTHER THAN GLENAIR, INC. WITHOUT WRITTEN PERMISSION FROM GLENAIR, INC. THE INFORMATION HEREIN HAS BEEN DEVELOPED AT GLENAIR'S EXPENSE AND MAY BE USED FOR ENGINEERING EVALUATION AND INCORPORATION INTO TECHNICAL SPECIFICATIONS AND OTHER DOCUMENTS WHICH SPECIFY PROCUREMENT OF PRODUCTS FROM GLENAIR, INC.

UNLESS OTHERWISE SPECIFIED		DRAWN	M. GOMEZ	03/20/09	<b>GLENAIR, INC.</b> CAD 2008 1211 AIR WAY - GLENDALE - CALIFORNIA 91201	
DIMENSIONS ARE IN INCHES		CHECK	T ROTHBAUER	03/20/09		
TOLERANCES:		ENGR	T ROTHBAUER	03/20/09		
FRACTIONS $\pm 1/16$		 APPROVED			BACKSHELL, RFI/EMI BANDING 5	
DECIMALS .XX $\pm .03$ .XXX $\pm .015$						
ANGLES $\pm 2^\circ$		APPROVED			CODE IDENT. NO.	SIZE
DO NOT SCALE THIS DRAWING		ORIGINAL RELEASE DATE			06324	C
B/F 98-6860 P/C 44		NON REPAIRABLE COMMERCIAL ITEM			SCALE N/A	WEIGHT N/A
					SHEET 2 OF 2	REV. C