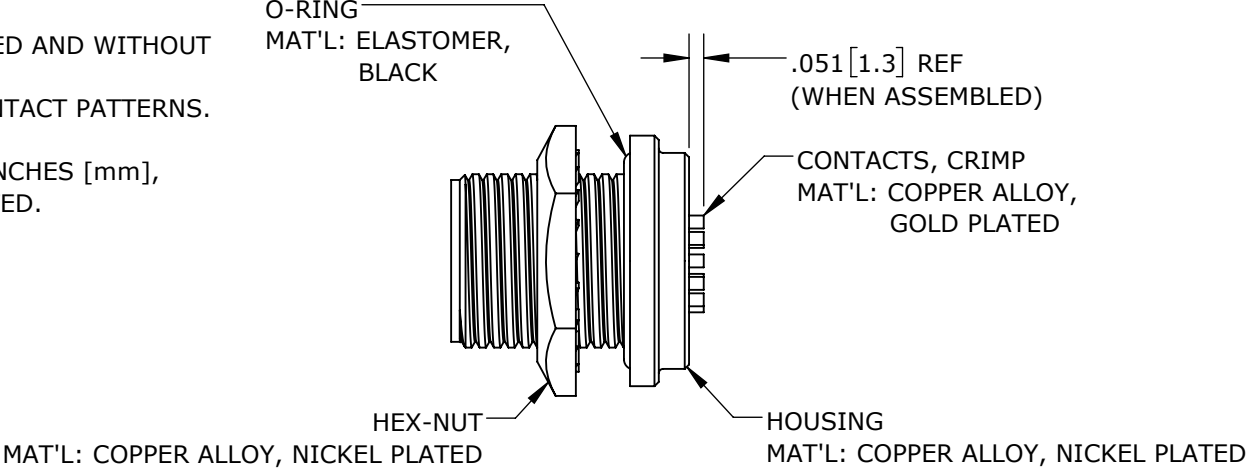
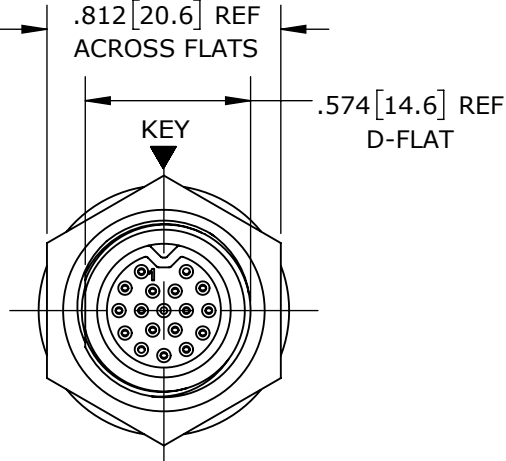


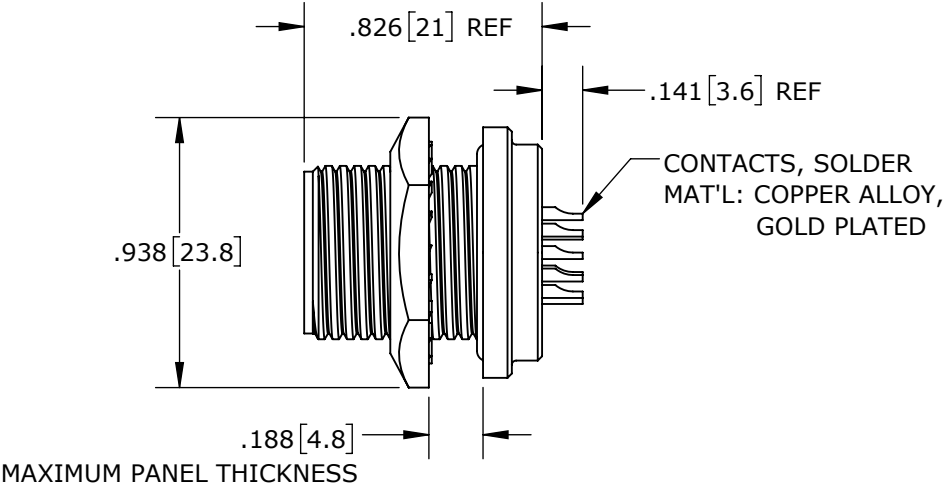
- NOTES:
- 1. CRIMP CONTACTS SUPPLIED UNASSEMBLED AND WITHOUT EPOXY BACKING.
 - 2. REFER TO DRAWING HPSFMISTD FOR CONTACT PATTERNS.
 - 3. HEX-NUT TORQUE: 10-12 IN-LB.
 - 4. DIMENSIONS ARE REFERENCE ONLY, IN INCHES [mm], WITHIN ±0.015 UNLESS OTHERWISE NOTED.



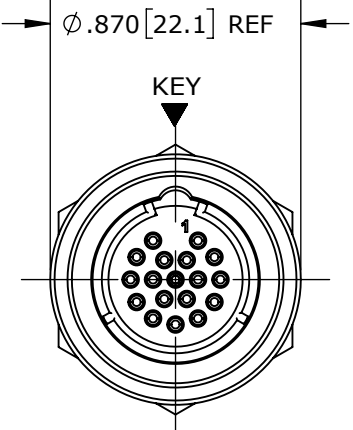
CRIMP CONTACTS
SF7980-18SG-300 SHOWN



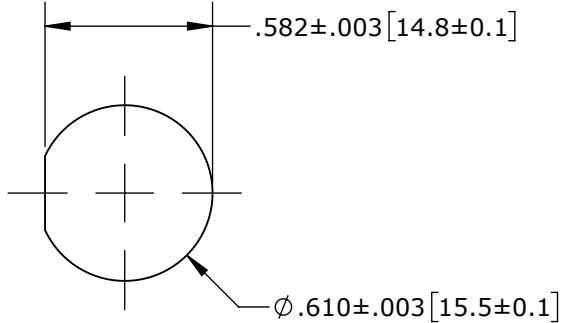
FACE VIEW
SF7982-18SG-300 SHOWN



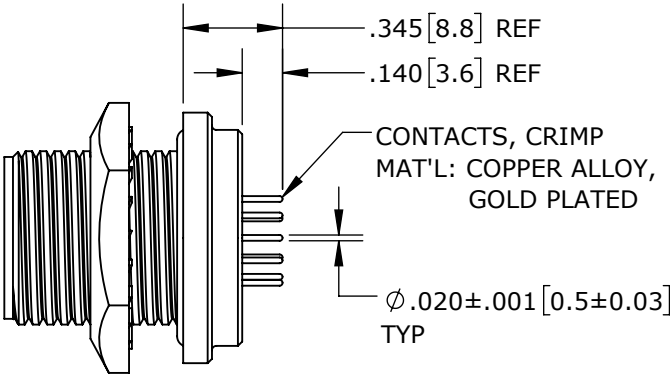
SOLDER CONTACTS
SF7982-18SG-300 SHOWN



WIRING END
SF7982-18SG-300 SHOWN



RECOMMENDED PANEL CUT-OUT



PC TAIL CONTACTS
SF7984-18SG-3ES SHOWN

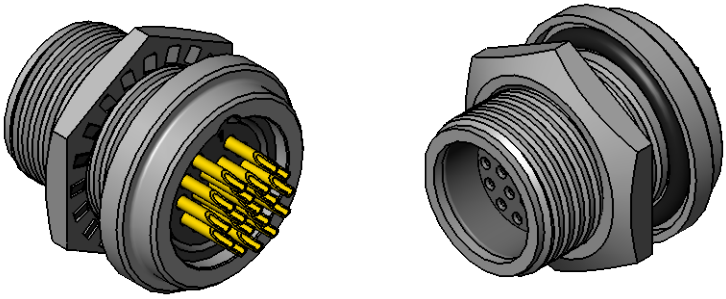
PANEL-MOUNT CONNECTOR PART NUMBERS:

S F 7 9 8 X - X S G - 3 X X

EPOXY BACKING:
3ES = WITH EPOXY
300 = WITHOUT EPOXY

OF CONTACTS: 9 - 18

CONTACTS STYLE:
0 = CRIMP
2 = SOLDER
4 = PC TAIL




CUSTOMER APPROVAL

THIS DOCUMENT CONTAINS CONFIDENTIAL INFORMATION PROPRIETARY TO CONXALL CORPORATION. ANY REPRODUCTION, DISCLOSURE, OR USE OF THIS DOCUMENT /INFORMATION IS EXPRESSLY PROHIBITED UNLESS AUTHORIZED IN WRITING BY CONXALL CORPORATION.

APPROVED BY: _____
DATE: _____

RoHS COMPLIANT

0A	PNK	1-30-18	DRAWING CREATED PER PDR17011					
REV.	INIT.	DATE	DESCRIPTION					
ALL INFORMATION ILLUSTRATED IS THE PROPERTY OF "CONXALL CORPORATION." UNAUTHORIZED DUPLICATION OR DISTRIBUTION OF THIS DOCUMENT IS PROHIBITED.			ORIG. DRAWN BY: PNK		DATE: 1-30-18		 601 E. WILDWOOD VILLA PARK, IL 60181	
			CHECKED BY:					
ALL UNITS ARE IN FEET, INCHES, FRACTION OF INCHES AND DECIMALS.			APPROVED BY:		TITLE: PANEL-MOUNT CONNECTOR (9-18) #26 SOCKET CONTACTS SHIELDED MINI-CON-X STANDARD PRODUCT			
UNLESS OTHERWISE SPECIFIED TOLERANCES: 3 PLACE DECIMALS ±.005 ANGLES ±1° FRACTIONS ±1/16								
▷ = CRITICAL CHARACTERISTIC FLAG PER SPEC. XXXX			SCALE NTS	SIZE B	SHEET 1 OF 1	CUSTOMER: SF798X-XSG-3XX		REV 0A
			FILE: SF798X-XSG-3XX_CD		DIRECTORY: SLW	PART NUMBER: SF798X-XSG-3XX		