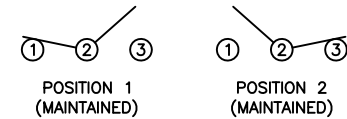


SCHEMATIC



SPECIFICATIONS

FUNCTION:
1P2T ON-ON

RATINGS:
0.5A 50VDC

CONTACT RESISTANCE:
Initial: 30mΩ Max.

INSULATION RESISTANCE:
500MΩ Min. at 500VDC

DIELECTRIC STRENGTH:
500VAC For 1 Minute

ELECTRICAL LIFE:
10,000 Cycles

APPROVALS:
RoHS LEAD FREE
COMPLIANT PROCESS COMPATIBLE

MATERIALS

BASE:
Phenolic Board

COVER:
Nickel Plated Steel

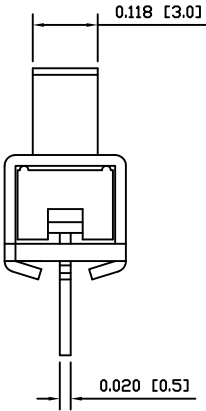
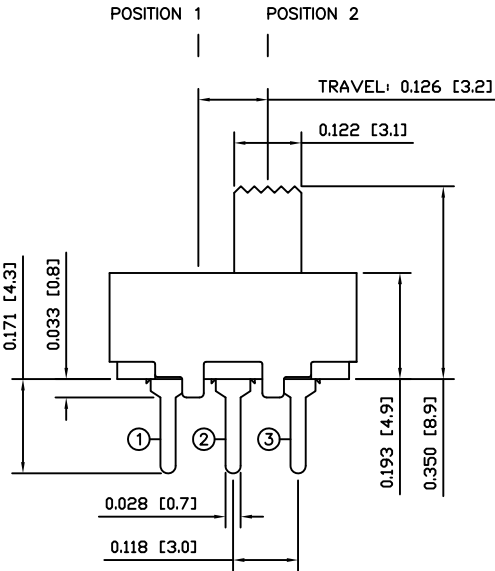
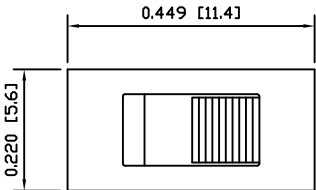
ACTUATOR:
Polyoxymethylene (POM)

CONTACT:
Gold (0.03μm) over
Nickel (2μm) Plated
Brass

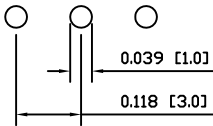
TERMINALS:
Gold (0.03μm) over
Nickel (2μm) Plated
Brass


COLORS


ACTUATOR:
Black



SUGGESTED PCB LAYOUT



 E-SWITCH[®]

 LAMB
INDUSTRIES

TITLE

LSS-120312B4-G

ITEM NUMBER

03-LSS120312B4G

DATE

JULY 21, 2010

REVISION

A

THE INFORMATION CONTAINED IN THIS DOCUMENT IS PROPRIETARY TO E-SWITCH AND IS NOT TO BE COPIED OR TRANSFERRED

A	INITIAL RELEASE	19211	10/07/21	CAB
REV.	DESCRIPTION	PCR	DATE	DRAWN BY

DIMENSIONS	INCHES [MILLIMETERS]
GENERAL TOLERANCES	±0.008 [±0.2] / ±1°
SCALE	DRAWING NOT TO SCALE
PROJECTION	1st Angle