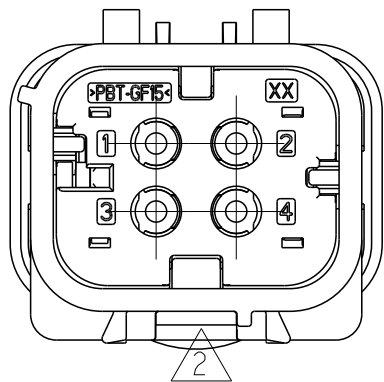
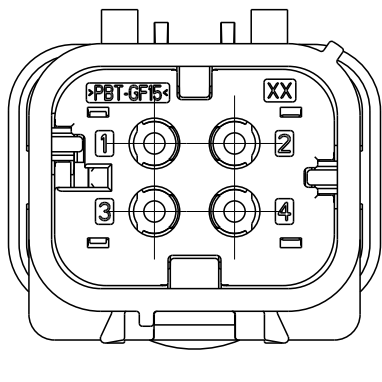


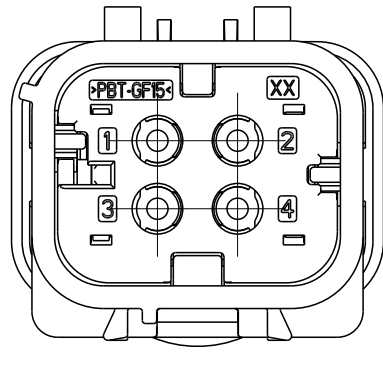
REVISIONS					
P	LTR	DESCRIPTION	DATE	DWN	APVD
	A	RELEASE PER ECO-20-015428	29OCT2020	DFS	JB



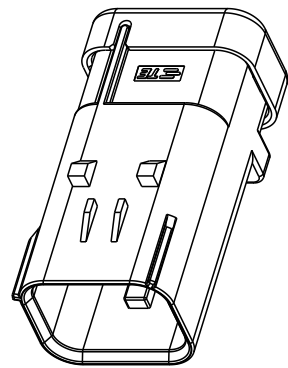
2338211-2
SCALE 2:1



2338211-3
SCALE 2:1



2338211-4
SCALE 2:1



ISOMETRIC VIEW SHOWN
FOR REFERENCE ONLY
SCALE 1:1

NOTES:

1. MATERIALS:

CAP HOUSING:
GENERIC TYPE = 15% GF PBT
COLOR = SEE TABLE

CAP TPA:
GENERIC TYPE = 15% GF PBT
COLOR = BLACK

CAP COVER:
GENERIC TYPE = 15% GF PBT
COLOR = BLACK

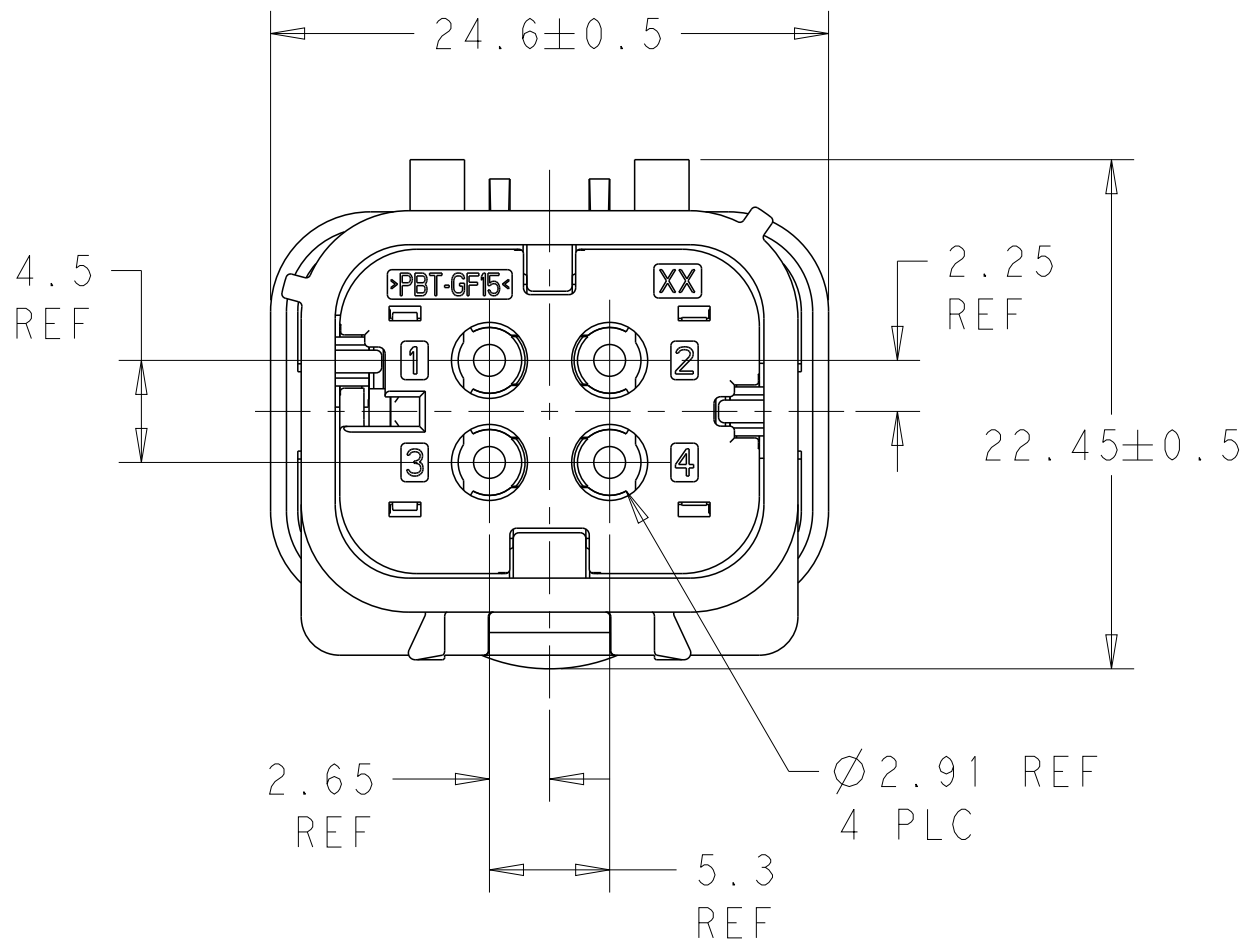
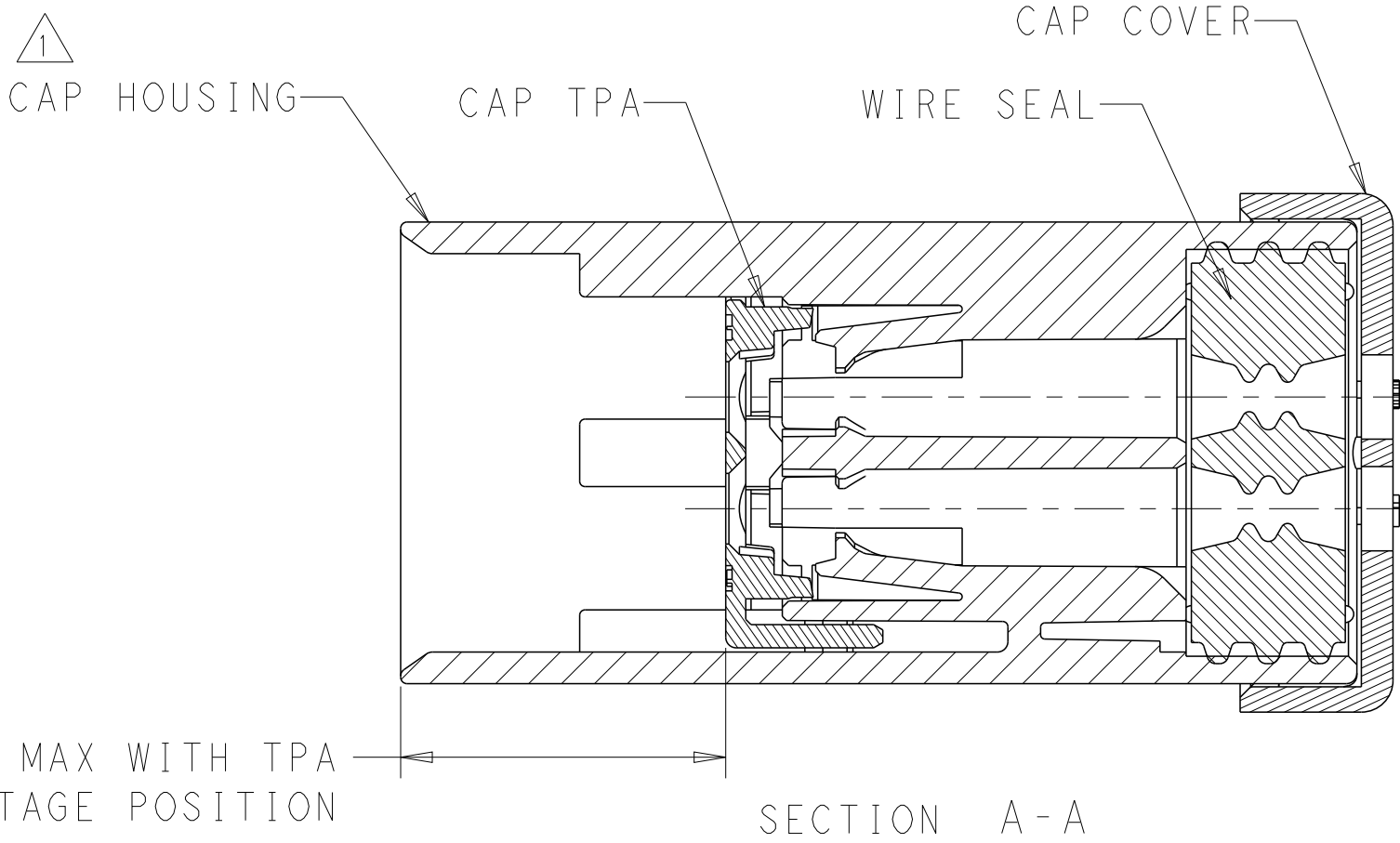
WIRE SEAL:
GENERIC TYPE = SILICONE RUBBER
COLOR = GREEN

2. NOT TOOLED FOR PRODUCTION.

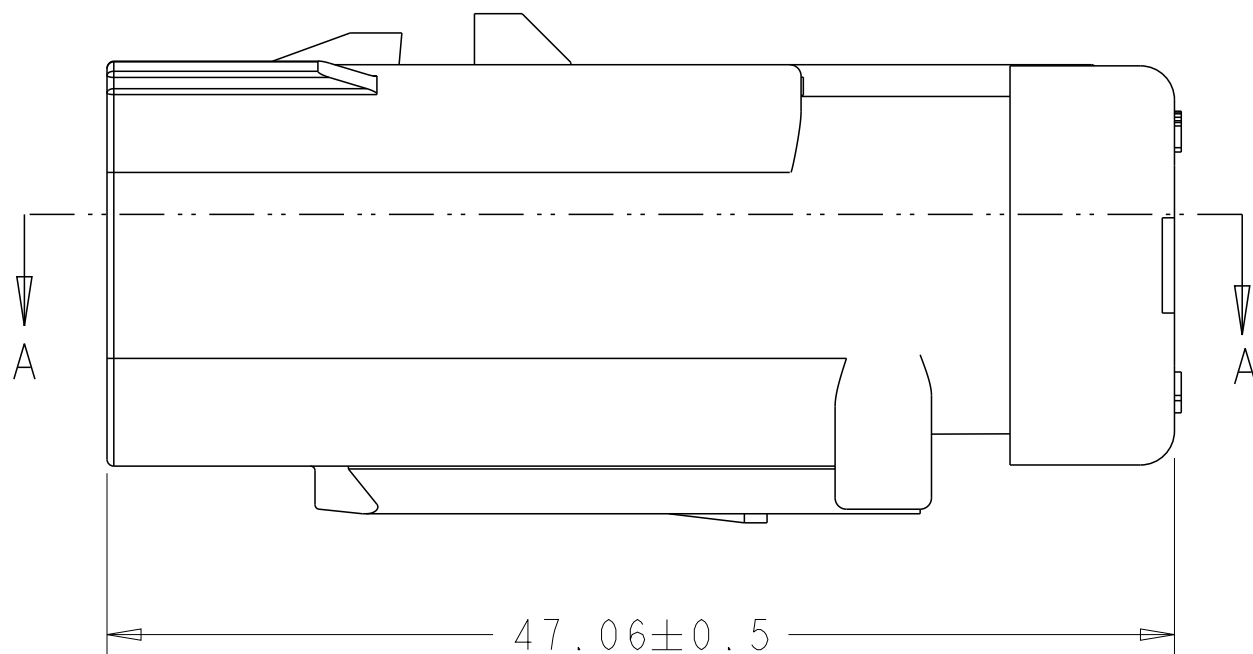
3. TPA SHOWN IN THE PRE-STAGED (AS SHIPPED) POSITION.

4. MATTE SEAL TO ACCOMODATE WIRE INSULATION O.D. RANGE OF 2.18MM TO 3.81MM

5. REFER TO AS16 COAX PRODUCT GROUP DRAWING: 2381263 FOR INFORMATION REGARDING MATING COMPONENTS, ACCESSORIES, AND APPLICATION TOOLING.



2338211-1 AS SHOWN



BEIGE	2338211-4
SIGNAL BLUE	2338211-3
CLARET VIOLET	2338211-2
WATER BLUE	2338211-1
HOUSING COLOR	PART NUMBER

THIS DRAWING IS A CONTROLLED DOCUMENT.		DWN J. LOCONDRO CHK K.A. DEBOCK APVD J. BARTH	02-Nov-2014 14FEB2019 29OCT2020	TE Connectivity			
DIMENSIONS: mm		TOLERANCES UNLESS OTHERWISE SPECIFIED:		NAME CAP PIN ASSY, 4P, W2W, SEALED COAX AS16 COAX			
		0 PLC ± 1 PLC ± 2 PLC ± 3 PLC ± 4 PLC ± ANGLES ± FINISH -		PRODUCT SPEC 108-94799			
MATERIAL - SEE NOTES				APPLICATION SPEC 114-94667			
				WEIGHT 12.9 g			
				CUSTOMER DRAWING			
				SIZE A2	CAGE CODE -	DRAWING NO C-2338211-C	RESTRICTED TO -
				SCALE 3:1		SHEET 1 OF 1	REV A