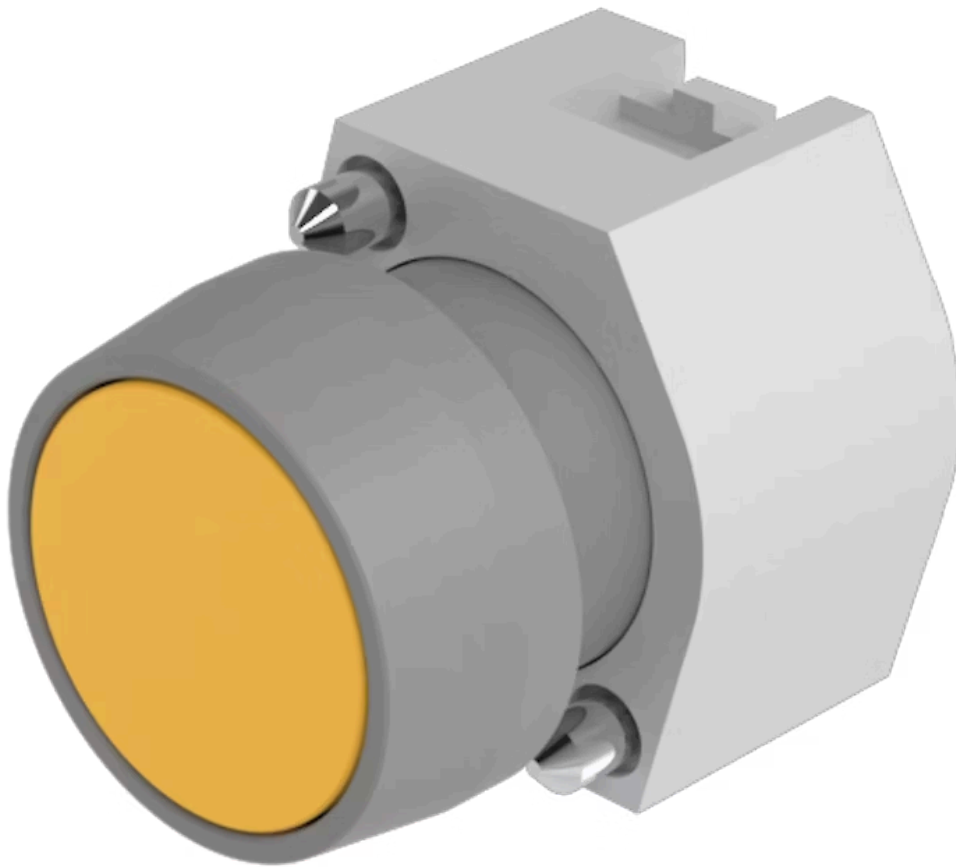


# Actuator

704.010.4



<https://eao.com/p/704.010.4>

Your product:

---



## 704.010.4 Actuator

### FRONT

Front bezel colour:	Grey
Front dimension:	Ø 29 mm
Front form:	round
Front bezel material:	Plastic

### MOUNTING

Design:	raised
---------	--------

### OPERATING-/INDICATION PART

Lens shape:	flush
Lens optics:	transparent
Lens material:	Plastic
Lens illumination:	non illuminative
Lens colour:	Yellow

### ELECTRICAL CHARACTERISTICS

Standards:	The switches comply with the "Standards for low-voltage switching devices" DIN EN 60947-1
------------	---

### MECHANICAL CHARACTERISTIC

Operating Travel:	ca. 5.8 mm ± 0.2 mm
Mechanical lifetime:	≤3 Mio. cycles of operation
Weight:	0.04 kg

**Operating force:** 8 N

**Switching action:** Momentary

## AMBIENT CONDITION

**IP Protection:** IP65 front side

**Operating temperature:** - 40 °C ... + 55 °C

**Storage temperature:** - 40 °C ... + 85 °C

## OTHER

**Housing material:** Plastic

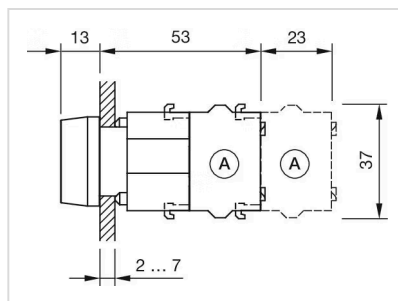
**max. number of switching elements:** 3

**Hints:** Frontring with protective cover to be mounted with a torque of 0.4 Nm onto actuator, Max. 3 switching elements can be clipped on

**Short Description:** Actuator, Ø 29 mm, flush, non illuminative, Yellow, Plastic, transparent, round, Grey, Plastic, Momentary

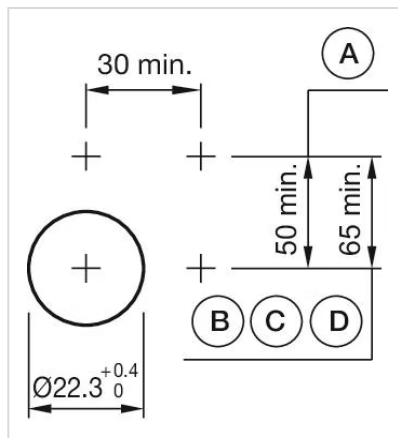
**Housing colour:** Grey

**Dimension drawings:**



A = Screw terminal

**Mounting cut-outs:**



A = Screw terminal  
 B = Push-in terminal (PIT)  
 C = Plug-in terminal 6.3 mm x 0.8 mm  
 D = Double plug-in terminal 6.3 mm x 0.8 mm

**Wiring diagrams:**

E---