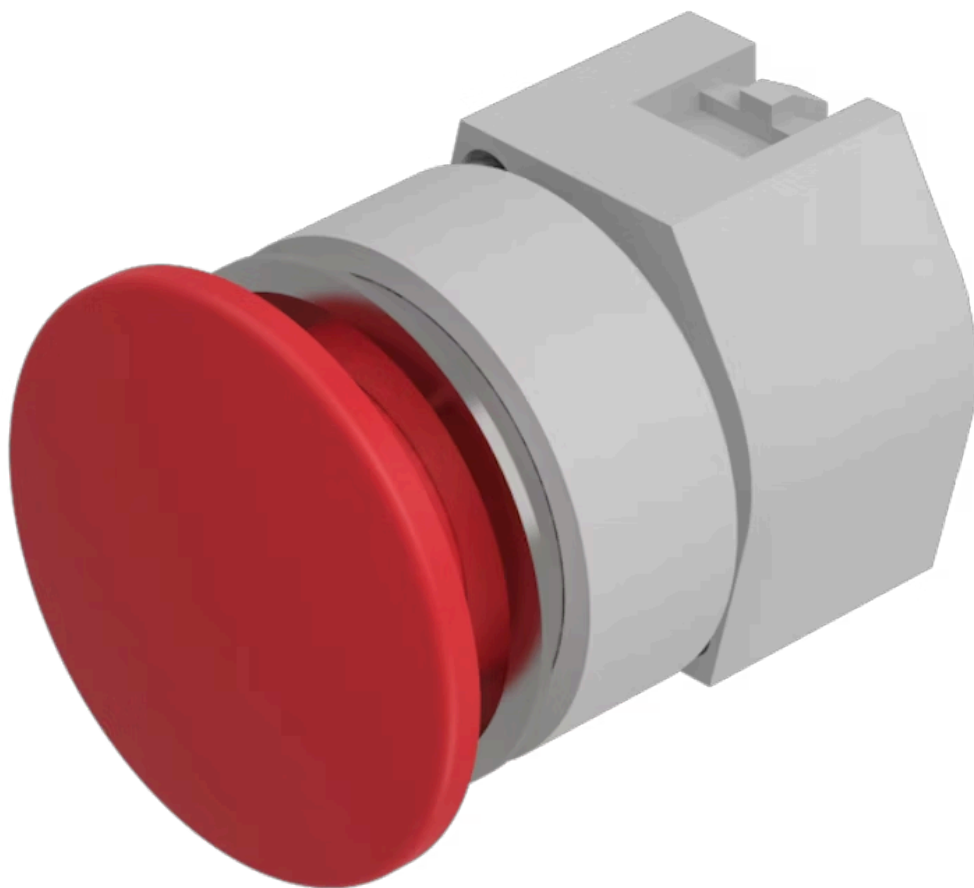


Actuator

704.071.210



<https://eao.com/p/704.071.210>

Your product:



704.071.210 Actuator

FRONT

Front bezel material:	Aluminium
Front dimension:	Ø 40 mm
Front bezel colour:	Black

MOUNTING

Mounting cut-out:	Ø 30.5 mm
Design:	flush

OPERATING-/INDICATION PART

Lens optics:	opaque
Lens colour:	Red
Lens material:	Plastic
Lens shape:	mushroom-head
Lens illumination:	non illuminative

ELECTRICAL CHARACTERISTICS

Standards:	The switches comply with the "Standards for low-voltage switching devices" DIN EN 60947-1
------------	---

MECHANICAL CHARACTERISTIC

Weight:	0.041 kg
Operating force:	6.2 N
Mechanical lifetime:	≤3 Mio. cycles of operation

Switching action: Momentary

Operating Travel: ca. 5.8 mm ± 0.2 mm

AMBIENT CONDITION

Operating temperature: – 40 °C ... + 55 °C

Storage temperature: – 40 °C ... + 85 °C

IP Protection: IP65 front side

OTHER

Housing colour: Grey

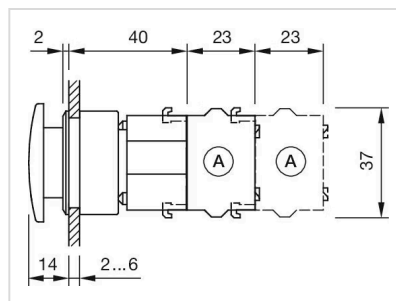
Housing material: Plastic

Hints: Max. 3 switching elements can be clipped on, The colour of anodised aluminium parts can vary due to technical production reasons

max. number of switching elements: 3

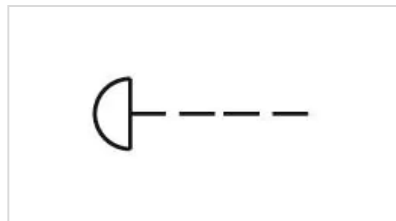
Short Description: Actuator, Ø 30.5 mm, Ø 40 mm, mushroom-head, non illuminative, Red, Plastic, opaque, Black, Aluminium, anodised, Momentary

Dimension drawings:

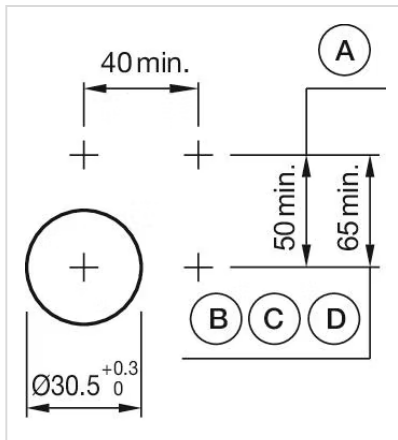


A = Screw terminal

Wiring diagrams:



Mounting cut-outs:



- A = Screw terminal
- B = Push-in terminal (PIT)
- C = Plug-in terminal 6.3 mm x 0.8 mm
- D = Double plug-in terminal 6.3 mm x 0.8 mm