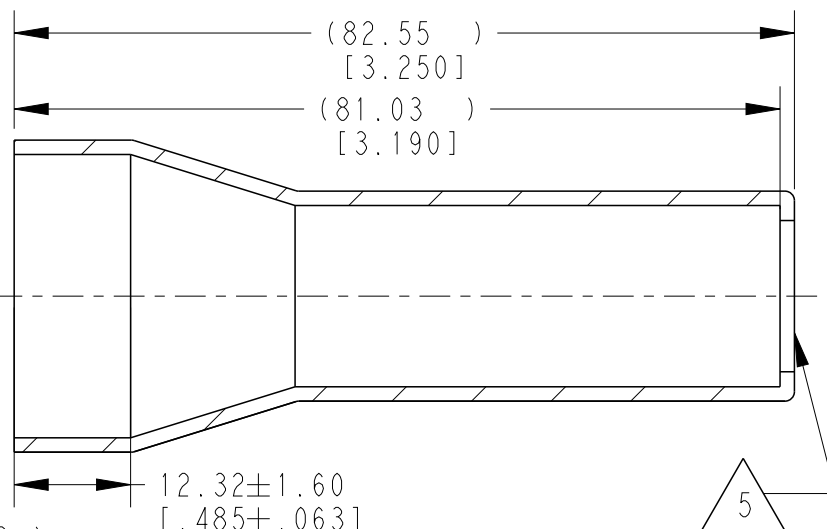
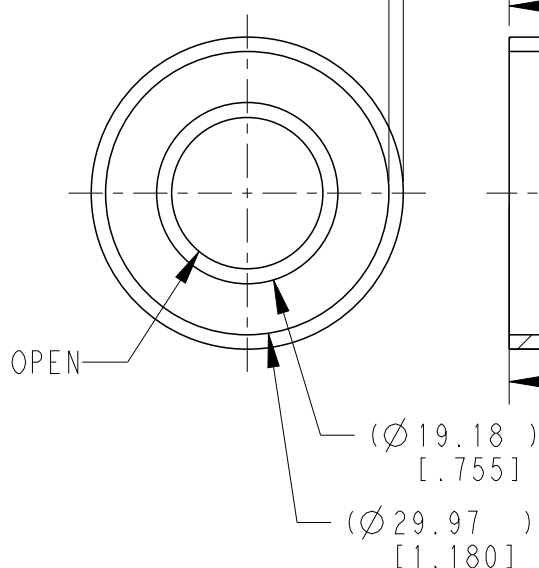


SCALE 1:2

## REVISIONS

P	LTR	DESCRIPTION	DATE	DWN	APVD
	A	NEW RELEASE PER ECO-14-013276	27AUG2014	DM	DM
	A1	REVISE PER PCN E-19-014486	16SEP2019	JA	IG
	A2	REVISED PER PCN E-20-004409	24MAR2020	AP	IG

$1.52 \pm 0.25$   
 $[.060 \pm .010]$   
 MEASURED  $6.35 \pm 0.64$   
 $[.250 \pm .025]$   
 FROM OPEN END



6. SMALL NON-FILLS ARE ACCEPTABLE INSIDE OF PART, INCLUDING SUPPLIER MARKING.
5. SMALL MATERIAL EXTENSION IS ACCEPTABLE ON THIS END ALL AROUND. WALL THICKNESS ON THIS END MAY VARY.
4. BOTTOM OF PART IS MOLDED OPEN.
3. THIS ACCESSORY PART IS PROVIDED WITHOUT TYPICAL TRANSPORTATION INDUSTRY PROCESS CONTROLS. NO VALIDATION TESTING HAS BEEN PERFORMED. CUSTOMER IS RESPONSIBLE FOR DETERMINING PRODUCT PERFORMANCE AND SUITABILITY FOR APPLICATION.
2. TEMPERATURE RATING: -29°C TO +100°C [-20°F TO +212°F].
1. THIS PART IS USED ON  
 HDP24-18-XXX RECEPTACLES  
 HDP26-18-XXX PLUGS  
 HD34-18-XXX RECEPTACLES  
 HD36-18-XXX PLUGS  
 WHERE XXX IS PIN ARRANGEMENTS.

## NOTES:

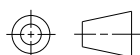
TE INTERNAL PN	DEUTSCH PN
HD30-18BT	HD30-18BT

## DIMENSIONS:

mm [INCHES]

TOLERANCES UNLESS OTHERWISE SPECIFIED:

0 PLC	±
1 PLC	±
2 PLC	±
3 PLC	±0.63 [.025]
4 PLC	±
ANGLES	±0° 30' 0"



DWN	27AUG2014
D.MEYER	
CHK	27AUG2014
I. GRANTCHAROVA	
APVD	27AUG2014
D.MEYER	
PRODUCT SPEC	

APPLICATION SPEC

WEIGHT 9.66g

CUSTOMER DRAWING

MATERIAL

PVC

FINISH

GRAY



TE Connectivity

NAME

 BOOT, SIZE 18  
 HD30/HDP20 SERIES

SIZE

A 4

CAGE CODE

4AFU8

DRAWING NO

C-HD30-18BT

RESTRICTED TO

-

SCALE

5:4

SHEET

1 OF 1

REV

A2

2019

RELEASED FOR PUBLICATION

THIS DRAWING IS UNPUBLISHED.

ALL RIGHTS RESERVED.

BY TE CONNECTIVITY

COPYRIGHT 2014