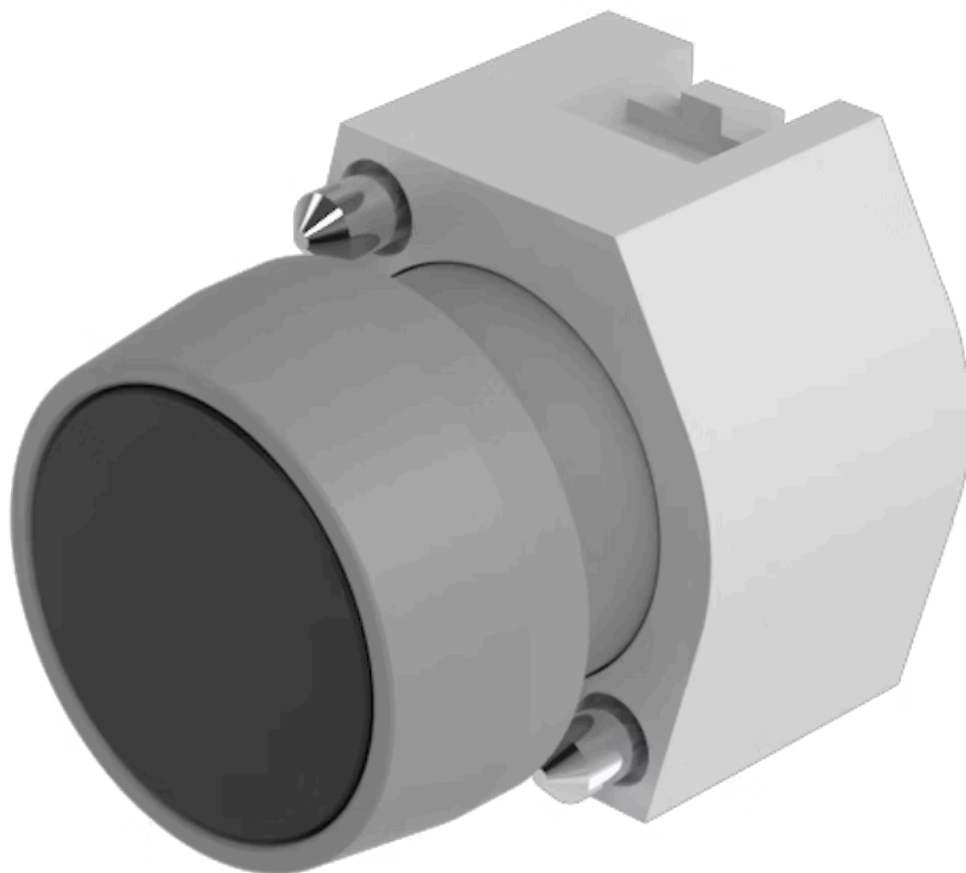


Actuator

704.010.0



<https://eao.com/p/704.010.0>

Your product:



704.010.0 Actuator

FRONT

Front form:	round
Front bezel material:	Plastic
Front dimension:	Ø 29 mm
Front bezel colour:	Grey

MOUNTING

Design:	raised
---------	--------

OPERATING-/INDICATION PART

Lens shape:	flush
Lens illumination:	non illuminative
Lens colour:	Black
Lens optics:	opaque
Lens material:	Plastic

ELECTRICAL CHARACTERISTICS

Standards:	The switches comply with the "Standards for low-voltage switching devices" DIN EN 60947-1
------------	---

MECHANICAL CHARACTERISTIC

Operating force:	8 N
Switching action:	Momentary
Mechanical lifetime:	≤3 Mio. cycles of operation

Weight: 0.04 kg

Operating Travel: ca. 5.8 mm ± 0.2 mm

AMBIENT CONDITION

IP Protection: IP65 front side

Storage temperature: – 40 °C ... + 85 °C

Operating temperature: – 40 °C ... + 55 °C

OTHER

Housing colour: Grey

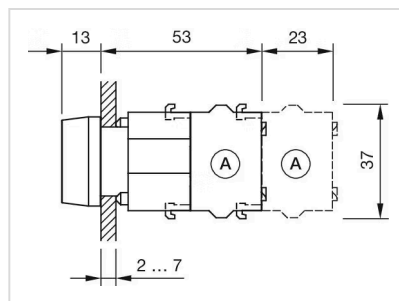
Hints: Frontring with protective cover to be mounted with a torque of 0.4 Nm onto actuator, Max. 3 switching elements can be clipped on

Short Description: Actuator, Ø 29 mm, flush, non illuminative, Black, Plastic, opaque, round, Grey, Plastic, Momentary

Housing material: Plastic

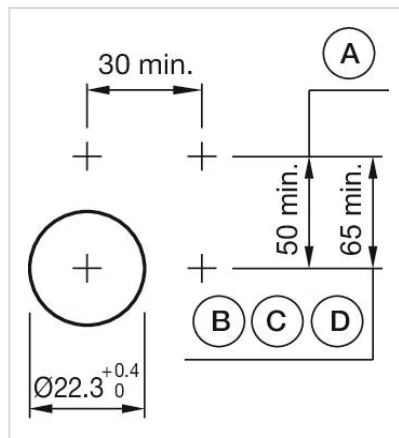
max. number of switching elements: 3

Dimension drawings:



A = Screw terminal

Mounting cut-outs:



A = Screw terminal
B = Push-in terminal (PIT)
C = Plug-in terminal 6.3 mm x 0.8 mm
D = Double plug-in terminal 6.3 mm x 0.8 mm

Wiring diagrams:

E---