

HDB-508802-()

SHEET 1 OF 1

REV. E

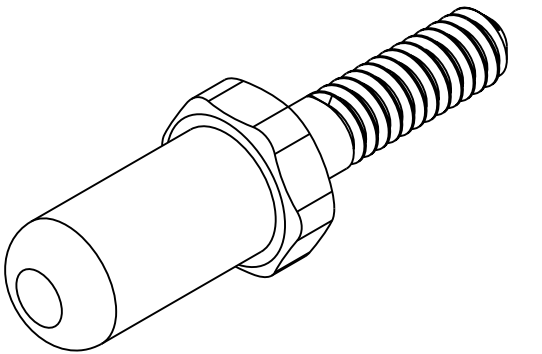
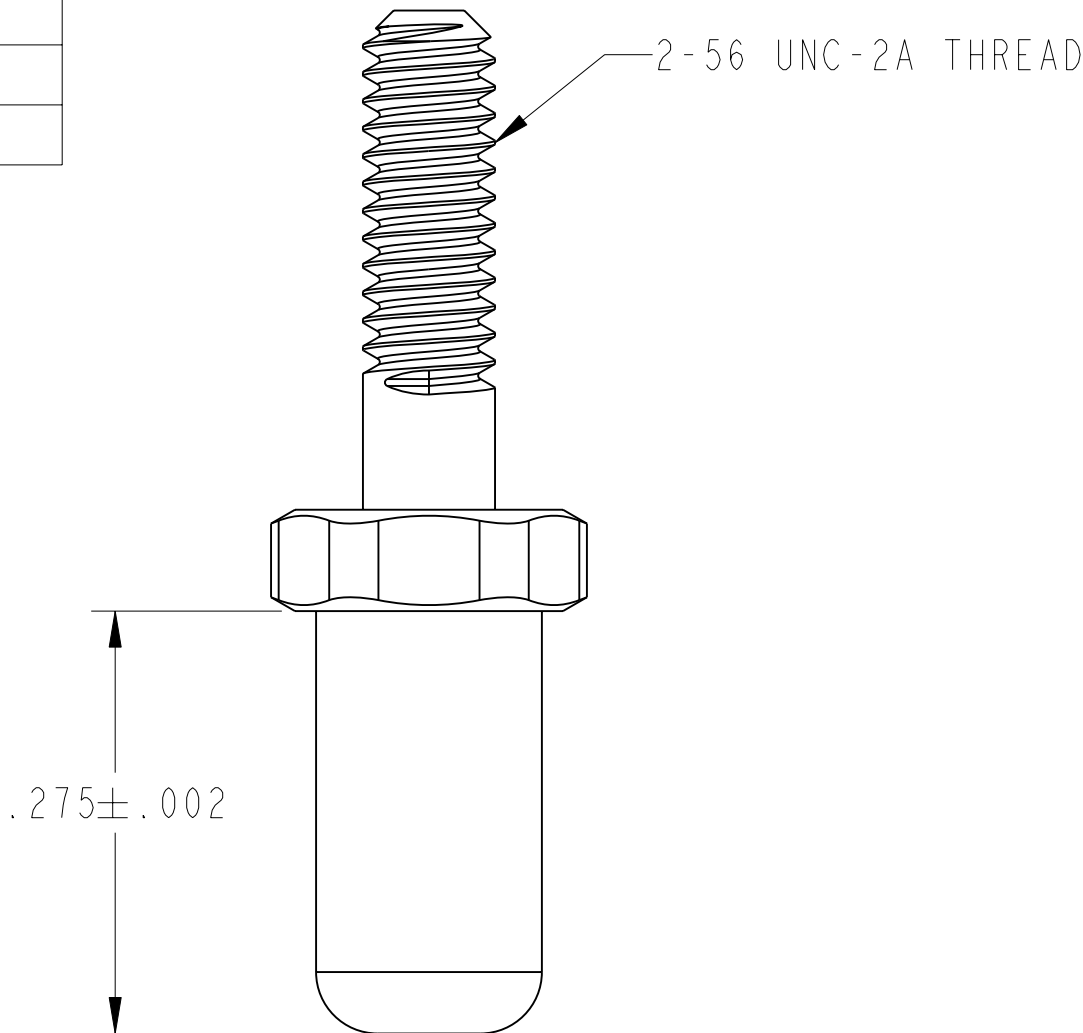
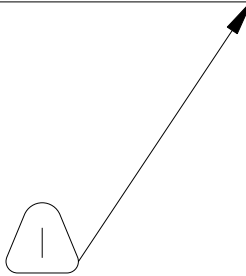
C

B

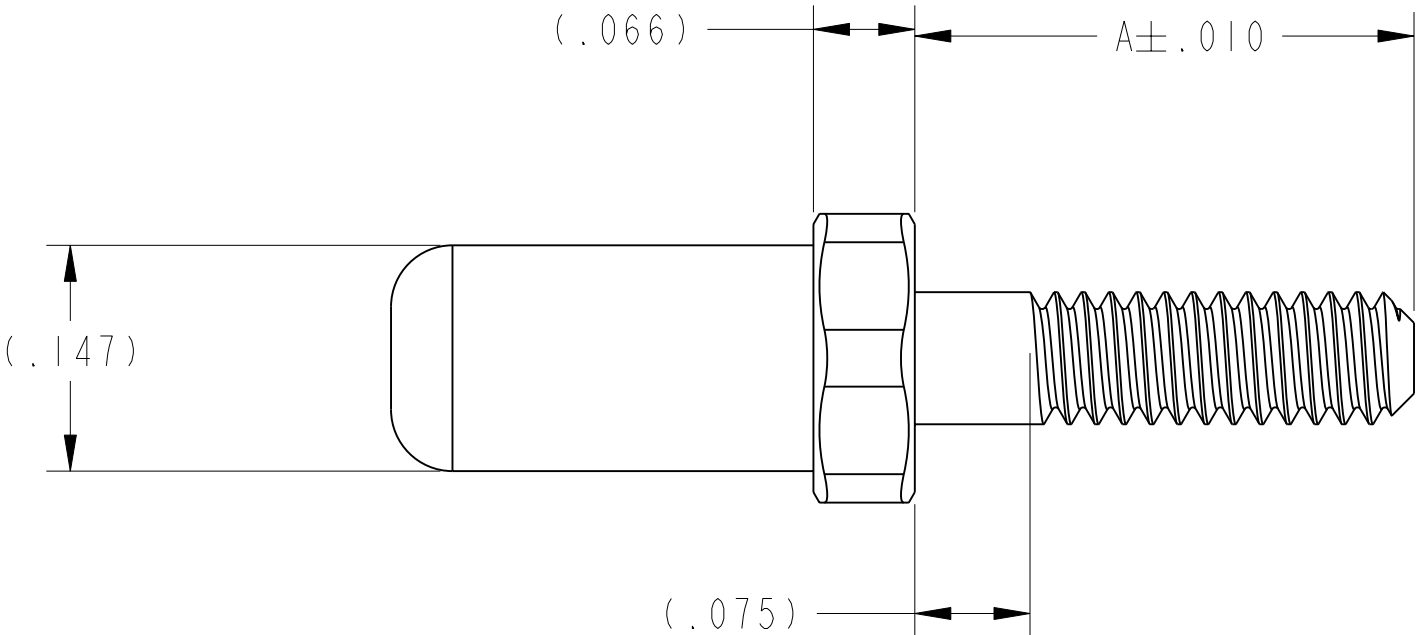
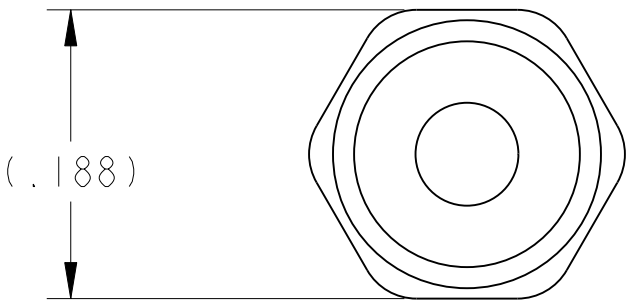
A

FORMAT: C-U-E-I

PART NUMBER	A	CONNECTOR STICKOUT (REF)
HDB-508802-001	.325	.250
HDB-508802-002	.575	.500
HDB-508802-003	.825	.750
HDB-508802-004	.275	.200
HDB-508802-005	.340	.265
HDB-508802-006	.515	.440



SCALE 5.000




NOTES: I. USE TABLE TO COMPLETE PART NUMBER SUFFIX.

THE USE OF THIS DOCUMENT IS UNLIMITED. HOWEVER, DOCUMENTS REFERENCED HEREON MAY CONTAIN LIMITED RIGHTS DATA.

N/A
NEXT ASSEMBLY

PRO/ENGINEER INFORMATION
Pro/e Model Used:
10-508802-001.PART
Drawing Name:
HDB-508802-000

UNLESS OTHERWISE SPECIFIED	SPECIFICATIONS
LINEAR DIMENSIONS ARE IN INCHES TOLERANCES: .XXXX = ±.0005 ANGLES= ±2° .XXX = ±.010 .XX = ±.03 .X = ±.1 ----- DIM.& TOL. PER ASME Y14.5M; DRM PER MIL-DTL-31000; OTHER Amphenol Slds. PER 9-3800 LEGENDS: =FLAG NOTE CALL OUT REFERENCE ONLY	MATERIAL SPEC.
	STAINLESS STEEL AMS 5640
	PROCESS SPEC.
	PASSIVATED

			M/F 10-508802-()			
POS	QTY	PART NUMBER	DESCRIPTION	NOTE		
PARTS LIST						
APPROVALS		DATE	AMPHENOL CORPORATION 40-60 DELAWARE AVENUE SIDNEY, N.Y. 13838			
PREPARED BY		06-Aug-07				
ENGINEER IN CHARGE						
DESIGN MANAGER						
DESIGN ACTIVITY GROUP						
		BLP	GUIDE PIN MOTHER BOARD CONNECTOR HDB3 CONNECTOR SERIES			
THIRD ANGLE PROJECTION			SIZE	CAGE CODE	DOCUMENT NO.	REV.
			C	77820	HDB-508802-()	E
			SCALE: 8.0		REF. N/A	SHEET 1 OF 1

REV.	SHEET 1 OF 1	DOCUMENT NO. HDB-508802-()
REVISIONS		
LTR	DESCRIPTION	DATE
A	INITIAL RELEASE	08/08/2007
B	CL (11) SEE CHANGE NOTICE ECNA4197-0000	12/14/2007 DM
C	CL (11) SEE CHANGE NOTICE ECN: B0846-0000	01/13/2011 D. MORSE
D	CL(11) SEE CHANGE NOTICE ECN: B5712	1/30/13 RKC
E	CL (11) SEE CHANGE NOTICE ECN: B6096-0000	3/25/13 MRG

RELEASE STATE
WIP
REVISION
E
VERSION
0

REV. E
SHEET 1 OF 1

DOCUMENT NO.
HDB-508802-()