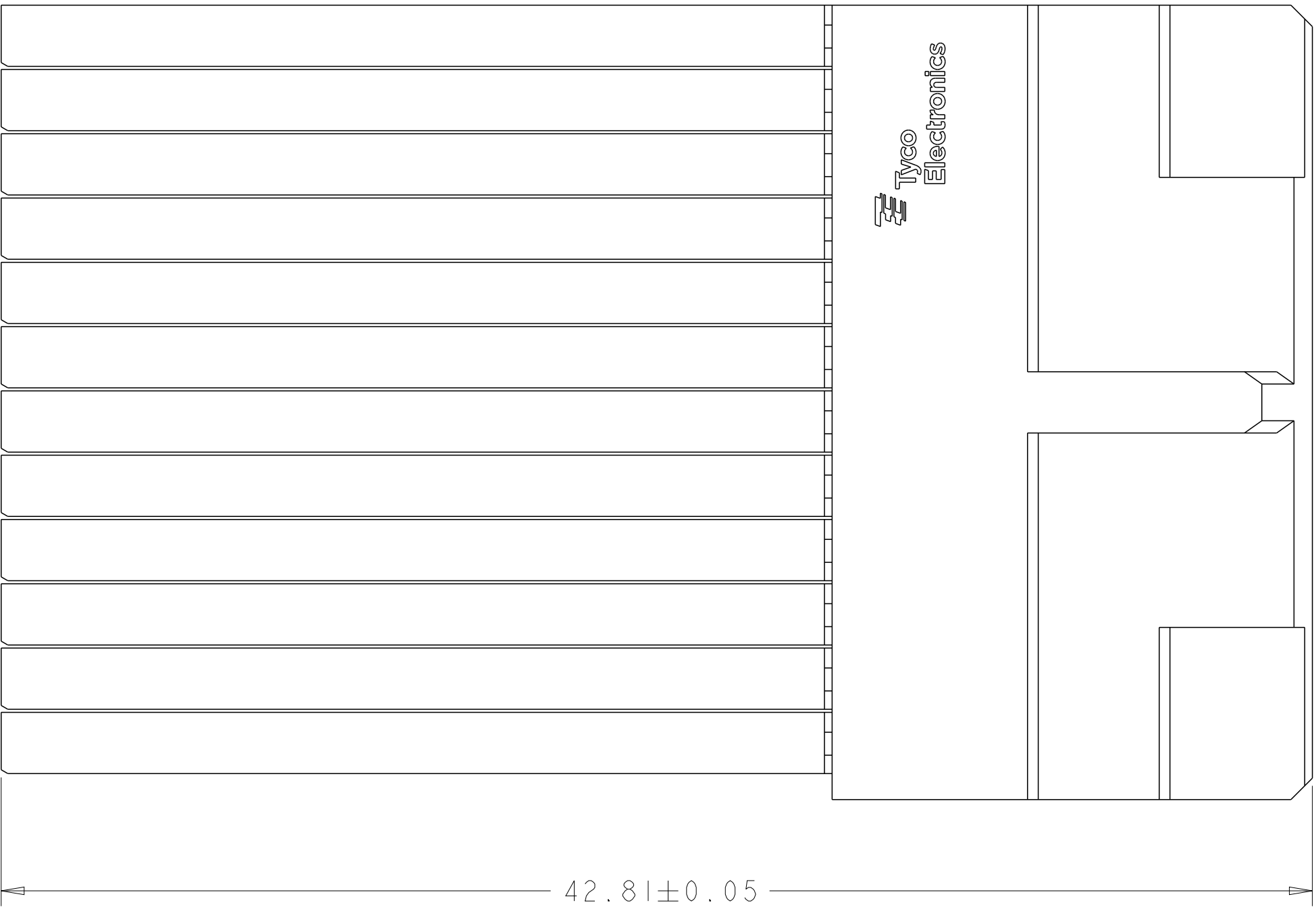


LOC		DIST		REVISIONS				
P	LYR	DESCRIPTION			DATE	DWN	APVD	
B		REVISED PER ECO-12-006575			23APR2012	KH	RP	
C		REVISED PER ECO-17-014864			11OCT2017	AP	RP	



1 MATERIAL:
CONTACT AND SHIELD - PHOS BRONZE
HOUSING AND CHICKLET - LCP, UL 94V-0, COLOR - BLACK

2 FINISH:
CONTACT AREA FINISH CONFORMS TO THE REQUIREMENTS
OF TE PRODUCT SPECIFICATION 108-2303; BASED ON
TELCORDIA GR-1217-CORE FOR SYSTEM QUALITY
LEVEL III, APPLICATIONS IN CONTROLLED
ENVIRONMENTS (CENTRAL OFFICE).

3 CONNECTOR MARKED ON EITHER SIDE OF HOUSING WITH PART NUMBER
AND DATE CODE IN APPROXIMATE AREA SHOWN.

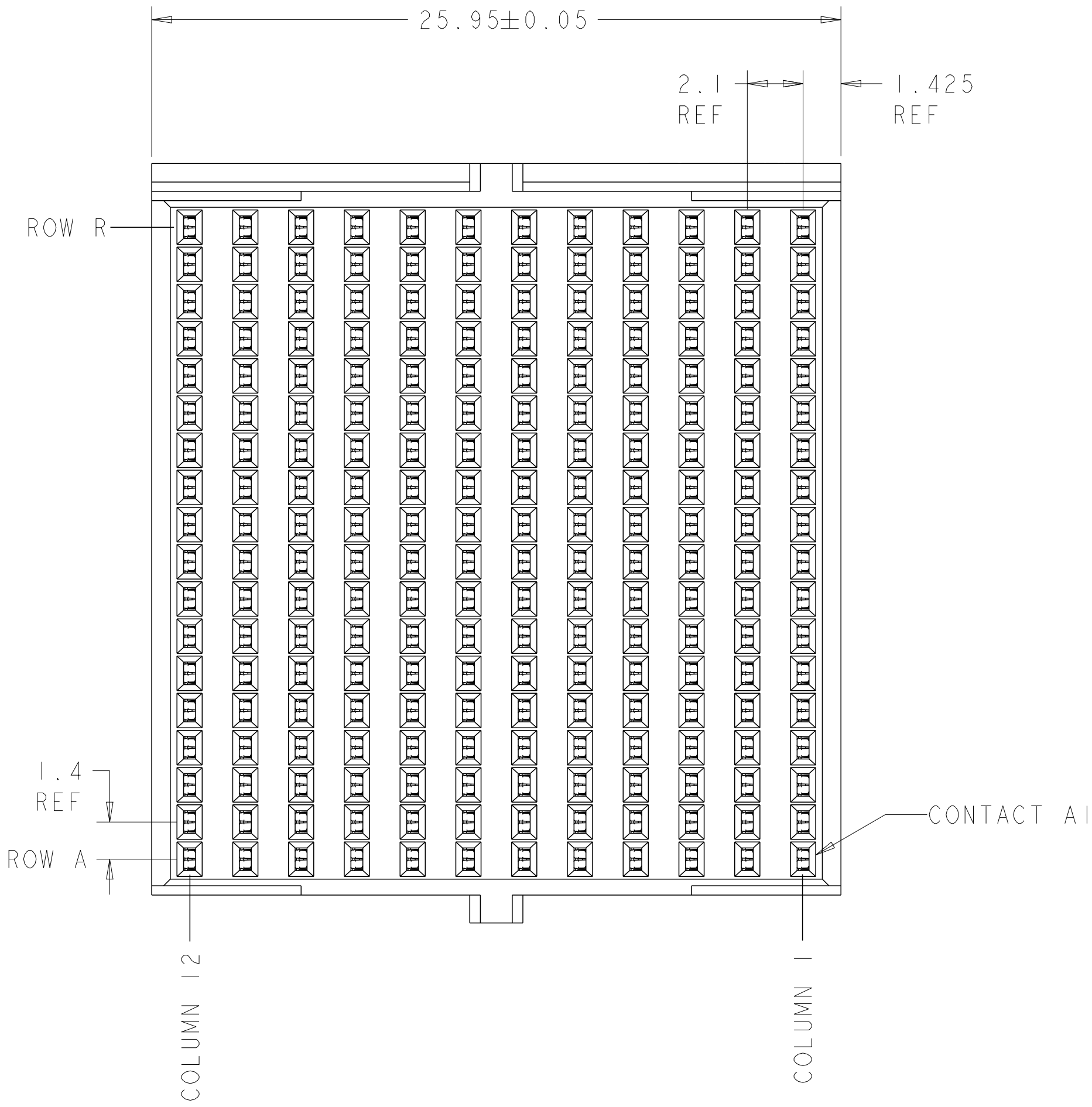
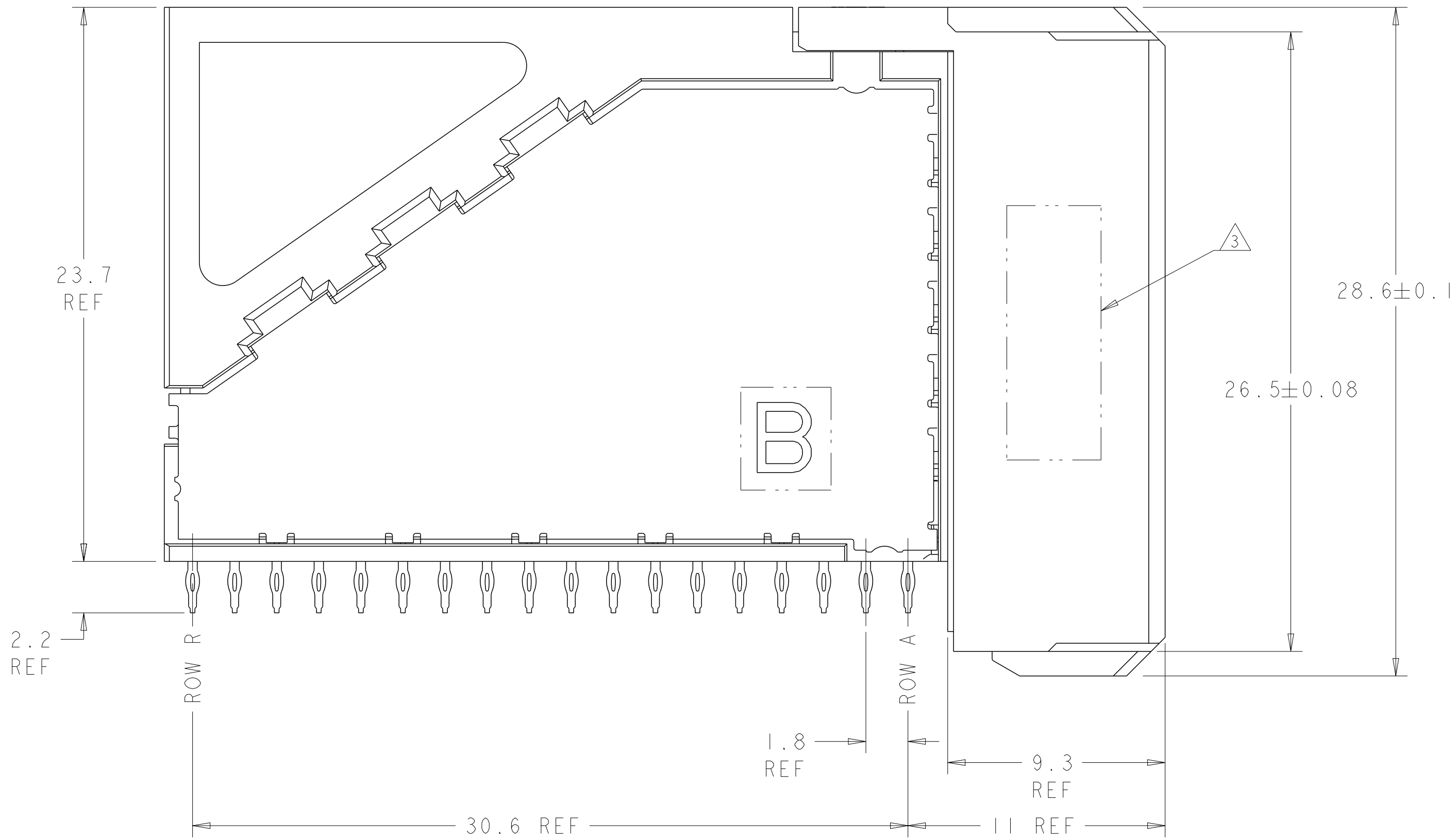
4 DIMENSION APPLIES TO CENTERLINE OF THRU HOLE.

5 DATUMS AND BASIC DIMENSIONS ESTABLISHED BY CUSTOMER.

6. CONTACT AREA LUBRICATED WITH BELLCORE APPROVED LUBRICANT.
TECHNICAL REFERENCE: GR-1217-CORE, ISSUE 1, NOVEMBER 1995.

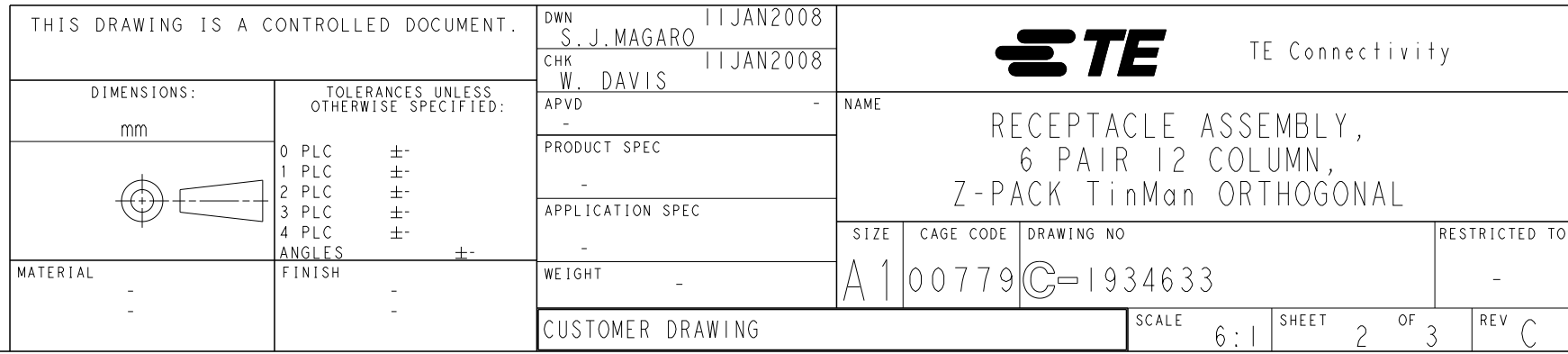
7 REFERENCE APPLICATION SPEC 114-13202 FOR RECOMMENDED PLATED
THRU HOLE DIAMETER AND PLATING THICKNESSES.

8 THE GROUNDS IN EACH COLUMN ARE COMMONED.

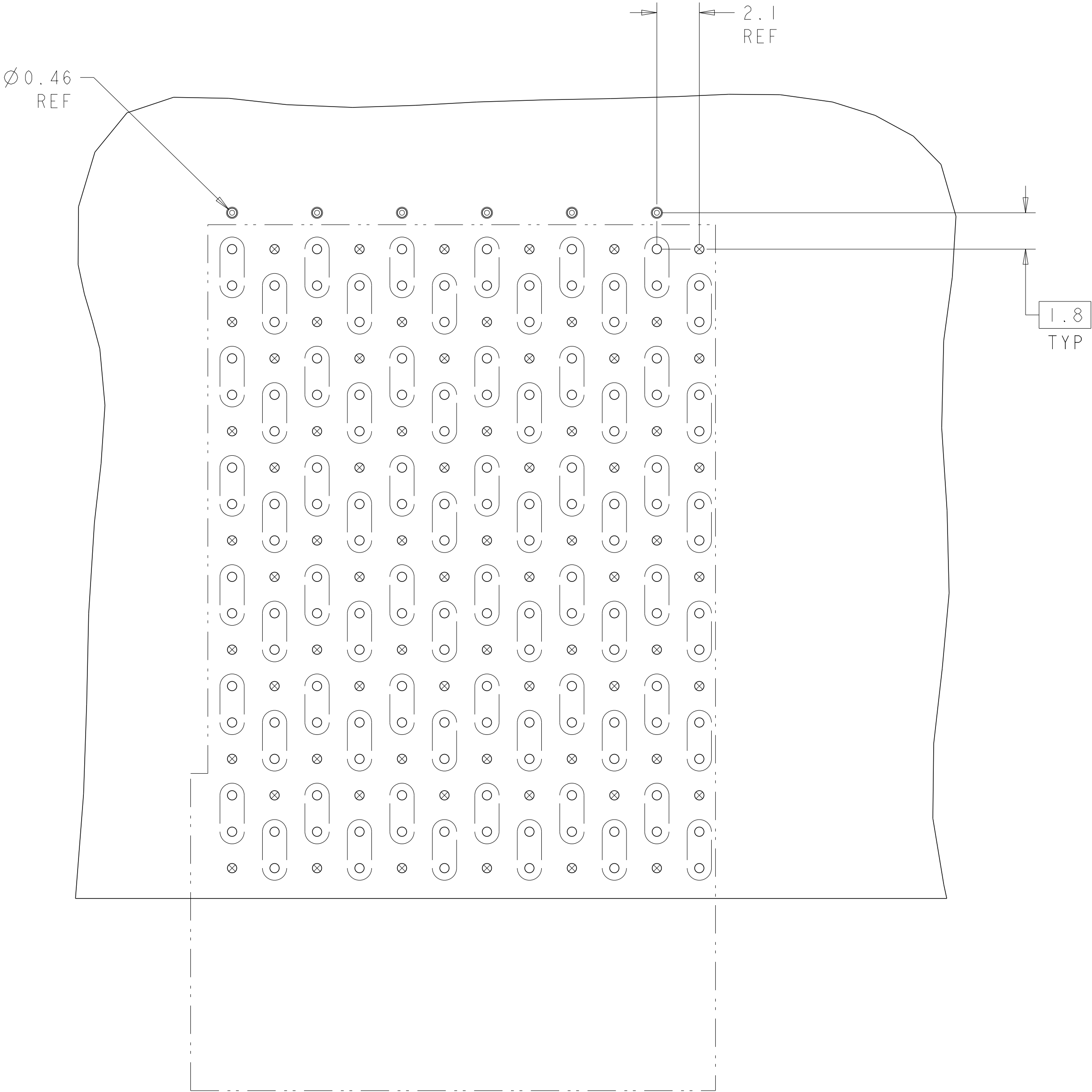


1934633-1
PART
NUMBER

THIS DRAWING IS A CONTROLLED DOCUMENT.		DWN S. J. MAGARO CHK W. DAVIS APVD	11JAN2008 11JAN2008 -
DIMENSIONS: mm		TOLERANCES UNLESS OTHERWISE SPECIFIED:	
0 PLC 1 PLC 2 PLC 3 PLC 4 PLC ANGLES FINISH		± ± ± ± ± ± ±	
MATERIAL		PRODUCT SPEC	
		APPLICATION SPEC	
		WEIGHT	
		CUSTOMER DRAWING	
		NAME	
		RECEPTACLE ASSEMBLY, 6 PAIR 12 COLUMN, Z-PACK TinMan ORTHOGONAL	
		RESTRICTED TO	
		SCALE 6:1 SHEET 1 OF 3 REV C	



LOC	DIST	REVISIONS					
		P	LTR	DESCRIPTION	DATE	DWN	APVD
AD	00	-		SEE SHEET 1	-	-	-



○ = SIGNAL
⊗ = GROUND
⊙ = SI VIA
RECOMMENDED SI VIA LAYOUT
COMPONENT SIDE SHOWN
SCALE 6:1

THIS DRAWING IS A CONTROLLED DOCUMENT.		DWN S. J. MAGARO 11JAN2008 CHK W. DAVIS 11JAN2008		TE Connectivity	
DIMENSIONS: mm		TOLERANCES UNLESS OTHERWISE SPECIFIED: 0 PLC ±.01 1 PLC ±.01 2 PLC ±.01 3 PLC ±.01 4 PLC ±.01 ANGLES ±.01 FINISH -		NAME PRODUCT SPEC APPLICATION SPEC SIZE CAGE CODE DRAWING NO RESTRICTED TO	
MATERIAL -		WEIGHT -		A100779C=1934633	
CUSTOMER DRAWING				SCALE 6:1 SHEET 3 OF 3 REV C	