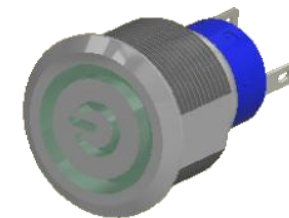
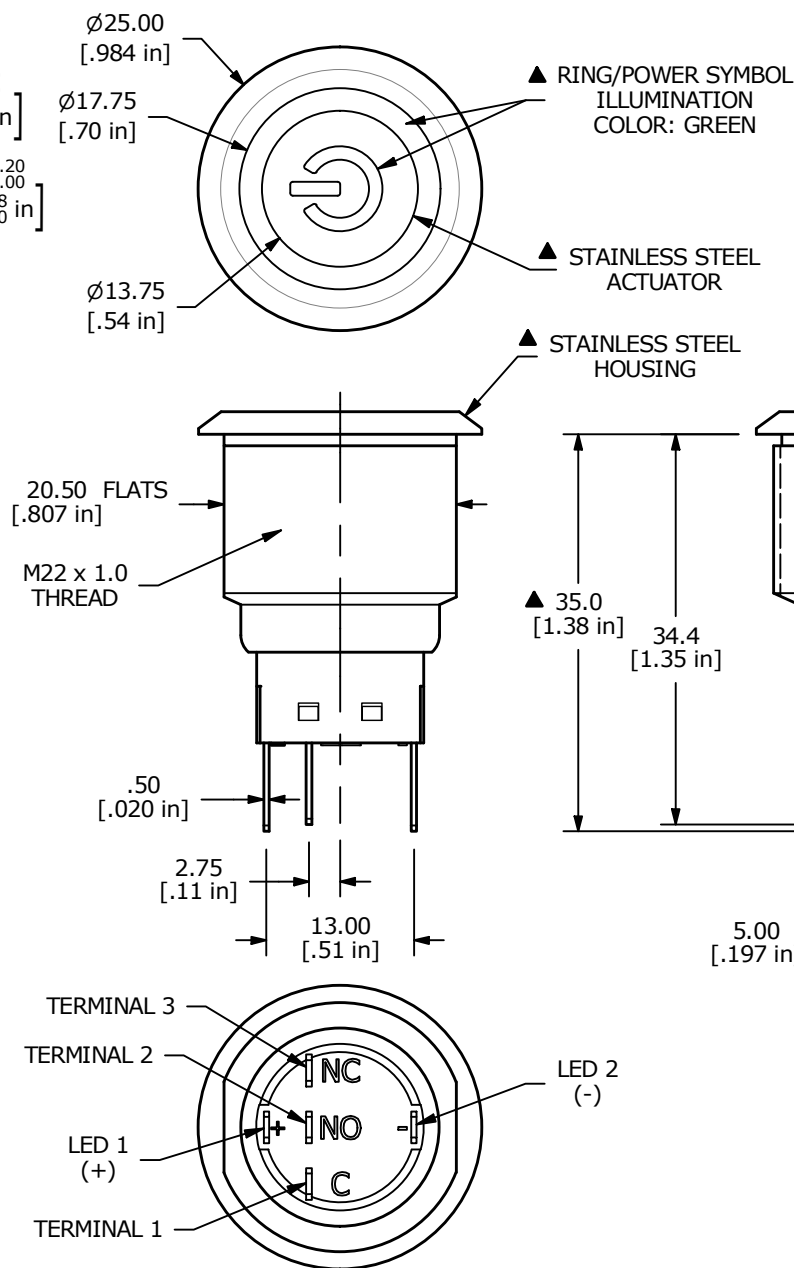


PANEL CUT-OUT  
PANEL THICKNESS 1-10mm

## NOTE:

1. ALL DIMENSIONS IN MM [INCH]
2. GENERAL TOLERANCE: X.X =  $\pm 0.4$   
X.XX =  $\pm 0.25$
3. TERMINAL NUMBERS FOR REF ONLY
- ▲ 4. CONTACT MATERIAL: SILVER
5. RATING: 3A 250 VAC cUL
6. ELECTRIC LIFE: 50,000 MAKE-AND-BREAK CYCLES AT FULL LOAD.
7. MECHANICAL LIFE: 1,000,000 CYCLES.
8. INSULATION RESISTANCE: 1,000 M $\Omega$  @ 500VDC MIN.
9. DIELECTRIC STRENGTH: 2,000 VAC MIN. FOR 1 MINUTE
10. CONTACT RESISTANCE: 50m $\Omega$  MAX. @ 1A 12VDC
11. OPERATING TEMP.: -20°C to 55°C
12. ▲ DENOTES CRITICAL PARAMETER.
- ▲ 13. LAMP VOLTAGE: 6V
14. TRAVEL: 3.2mm
15. ACTUATION FORCE:  $2.5 \pm 1.0$  N
16. MOUNTING NUT TORQUE: 5-14 Nm
17. INGRESS PROTECTION: IP67, IK10
18. HARDWARE SUPPLIED: O-RING AND HEXNUT



REV	ECO NO	DESCRIPTION	DATE	BY	E-SWITCH®				OBJECT ID
A	ECO-100642	Release	12/30/21	MW	TITLE ULV7F2BSS633				100120339
					SCALE	DATE	DR	DWG	REV
					3:2	12/21/2021	MW	T970081	A

THE INFORMATION CONTAINED IN THIS DOCUMENT IS PROPRIETARY TO  
E-SWITCH AND IS NOT TO BE COPIED OR TRANSFERRED