

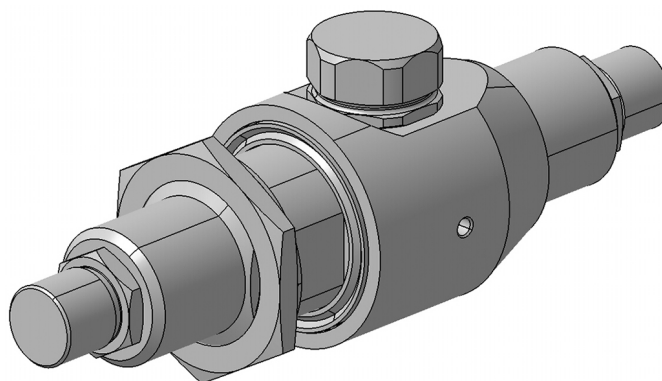
EMP Protector 3402.99.0004

Description

GDT technology up to 2.5 GHz

Benefits

Broad-band design
DC continuity for remote powering
The protector can also be installed reversely
Delivered without gas discharge tube
Data refer to GDT 9071.99.0547, 230 V
Compliant to IEC 61643-21



Product Configuration

Main path connectors Port 1: unprotected, F jack (female) - Port 2: protected, F jack (female)
Mounting and grounding MH25 (bulkhead mounting), brk (bracket)

Technical Data

Electrical Data

Impedance 75 Ω
Frequency range 0 - 1500 MHz
Insertion loss ≤ 0.5 dB
RF CW power ≤ 50 W
PIM 3rd order not specified

Surge current handling capability 10 single / 5 multiple kA (test pulse 8/20 μ s)
Residual pulse energy 350 μ J typically (test pulse 4 kV 1.2/50 μ s / 2 kA 8/20 μ s) main path - protected side

Mechanical Data

Weight 157 g

Environmental Data

Operating temperature -40 °C to +85 °C
Waterproof degree IP54 (according to IEC 60529, data refer to the coupled state)
2011/65/EU (RoHS - including 2015/863 and 2017/2102) compliant

Material Data

Piece Parts	Material	Surface Plating
Housing	Brass	SUCOPLATE (R) Plating
Port 1 center contact	Copper Beryllium Alloy	Gold Plating (without Nickel underplating)
Port 2 center contact	Copper Beryllium Alloy	Gold Plating (without Nickel underplating)

Related Documents

Outline drawing DOU-00004160.1
Mounting instruction DOC-0000176104