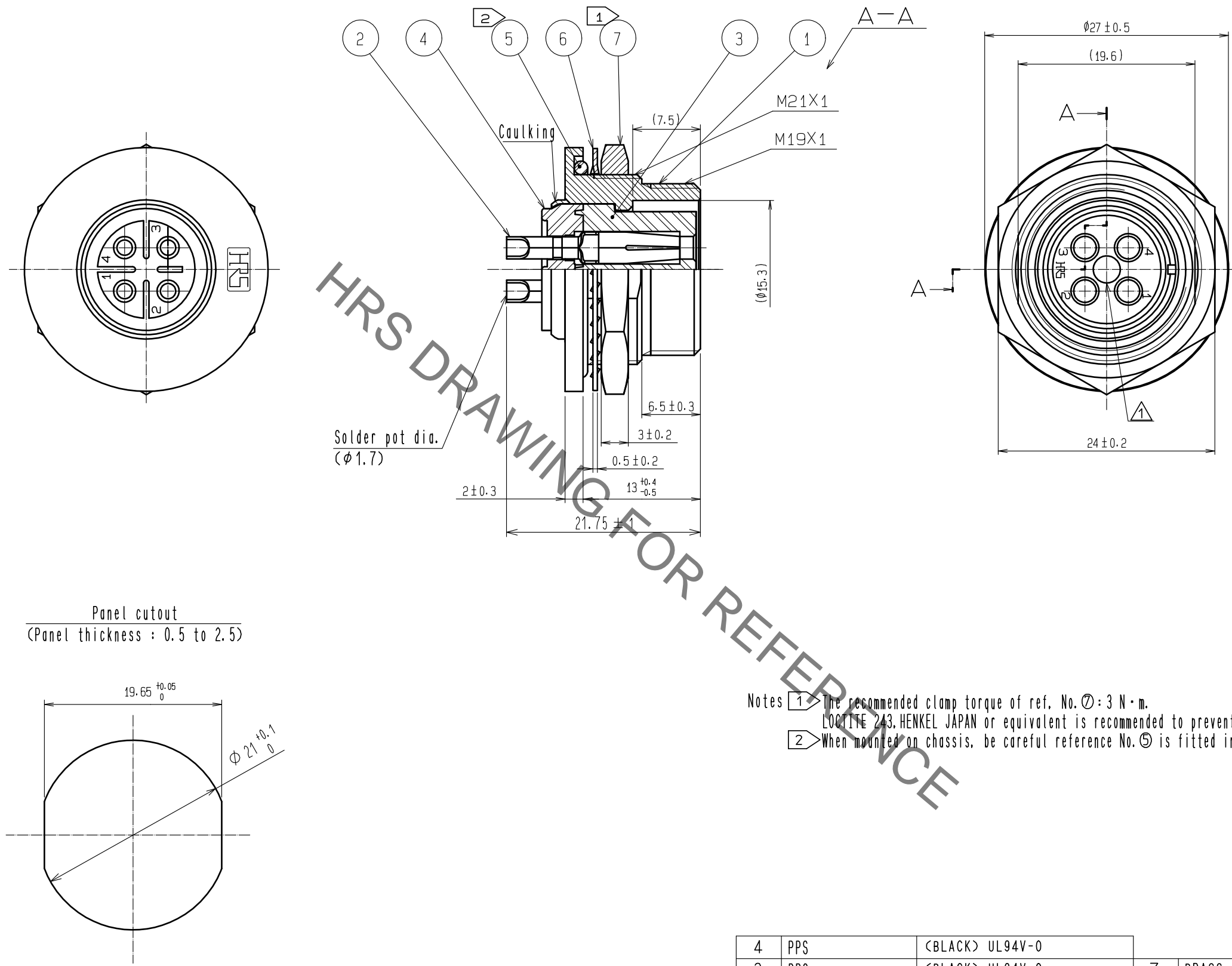
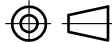




Jan.1.2022 Copyright 2022 HIROSE ELECTRIC CO., LTD. All Rights Reserved.
In case of consideration for using Automotive equipment / device which demand high reliability, kindly contact our sales window correspondents.



Notes 1 The recommended clamp torque of ref. No. ⑦: 3 N·m.
LOCTITE 243, HENKEL JAPAN or equivalent is recommended to prevent ref. No. ⑦ from loosening.
2 When mounted on chassis, be careful reference No. ⑤ is fitted into The indicates groove any biting.

4	PPS	(BLACK) UL94V-0					
3	PPS	(BLACK) UL94V-0		7	BRASS	NICKEL PLATING	
2	COPPER ALLOY	SILVER PLATING 2 μm min.		6	PHOSPHOR BRONZE	NICKEL PLATING	
1	ZINC ALLOY	CHROME PLATING		5	SILICONE RUBBER	(BLACK)	
NO.		MATERIAL		FINISH . REMARKS			
NO.		MATERIAL		FINISH . REMARKS			
UNITS mm				SCALE 2 : 1		COUNT 1	
				DESCRIPTION OF REVISIONS DIS-C-00000841		DESIGNED KN. IKEHARA	
				CHECKED HY. KOBAYASHI		DATE 16. 03. 02	
 HIROSE ELECTRIC CO., LTD.		APPROVED : HY. KOBAYASHI 15. 11. 06		DRAWING NO. EDC-111089-81-00			
		CHECKED : HY. KOBAYASHI 15. 11. 06		PART NO. RM15WTRZA-4S(81)			
		DESIGNED : KN. IKEHARA 15. 11. 06		CODE NO. CL109-1659-1-81			
		DRAWN : KN. IKEHARA 15. 11. 06		