

1 MATERIAL:HOUSING: ALUMINUM 6061.  
CONTACT: BeCu  
KEY: STAINLESS STEEL

2 FINISH:  
HOUSING: 0.025 MIN ELECTROLESS NICKEL  
PER AMS-C-26074, GRADE A, CLASS 4.

CONTACT: 1.27µm MIN Au OVER 1.02µm MIN  
NICKEL.

3 HOLE FOR POSITIVE RETENTION SCREW.

4 GROUND PAD Ø5mm ON BOTH SIDE OF PCB.

5 4-40 UNC X .25 LG. HEXALOBULAR 100 DEGREE  
FLAT HEAD SCREW OR TORX HEAD EQUIVALENT,  
ACCORDING TO ISO 10664.  
MATERIAL: STAINLESS STEEL, PASSIVATED

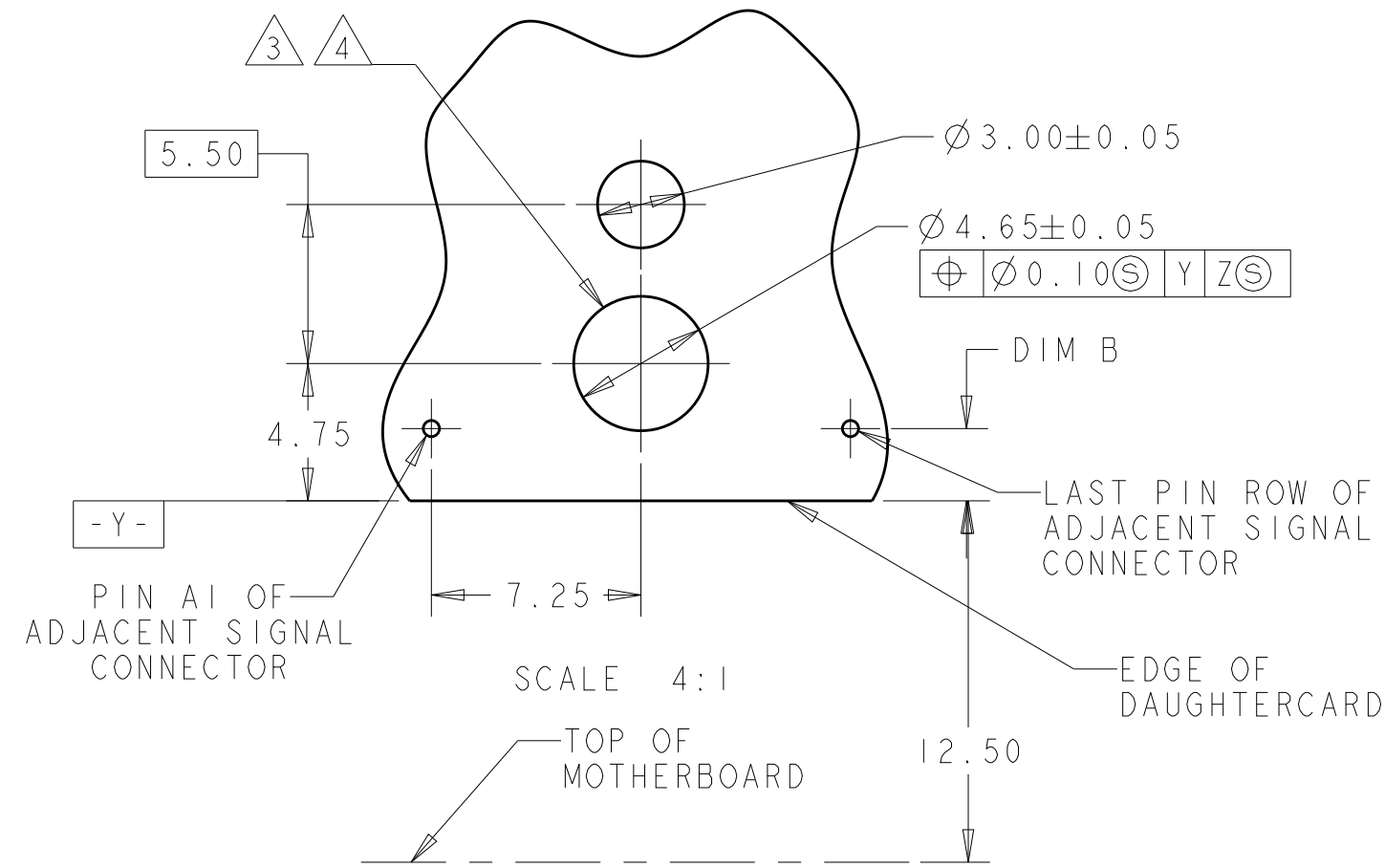
6 NO SECONDARY KEYING FEATURE

7 DENOTES RELATIONSHIP BETWEEN PRIMARY AND  
SECONDARY KEYING FEATURE

8 KEY CAN BE REMOVED AND FLIPPED TO ACHIEVE DESIRED  
ANGLE BETWEEN PRIMARY AND SECONDARY KEYS

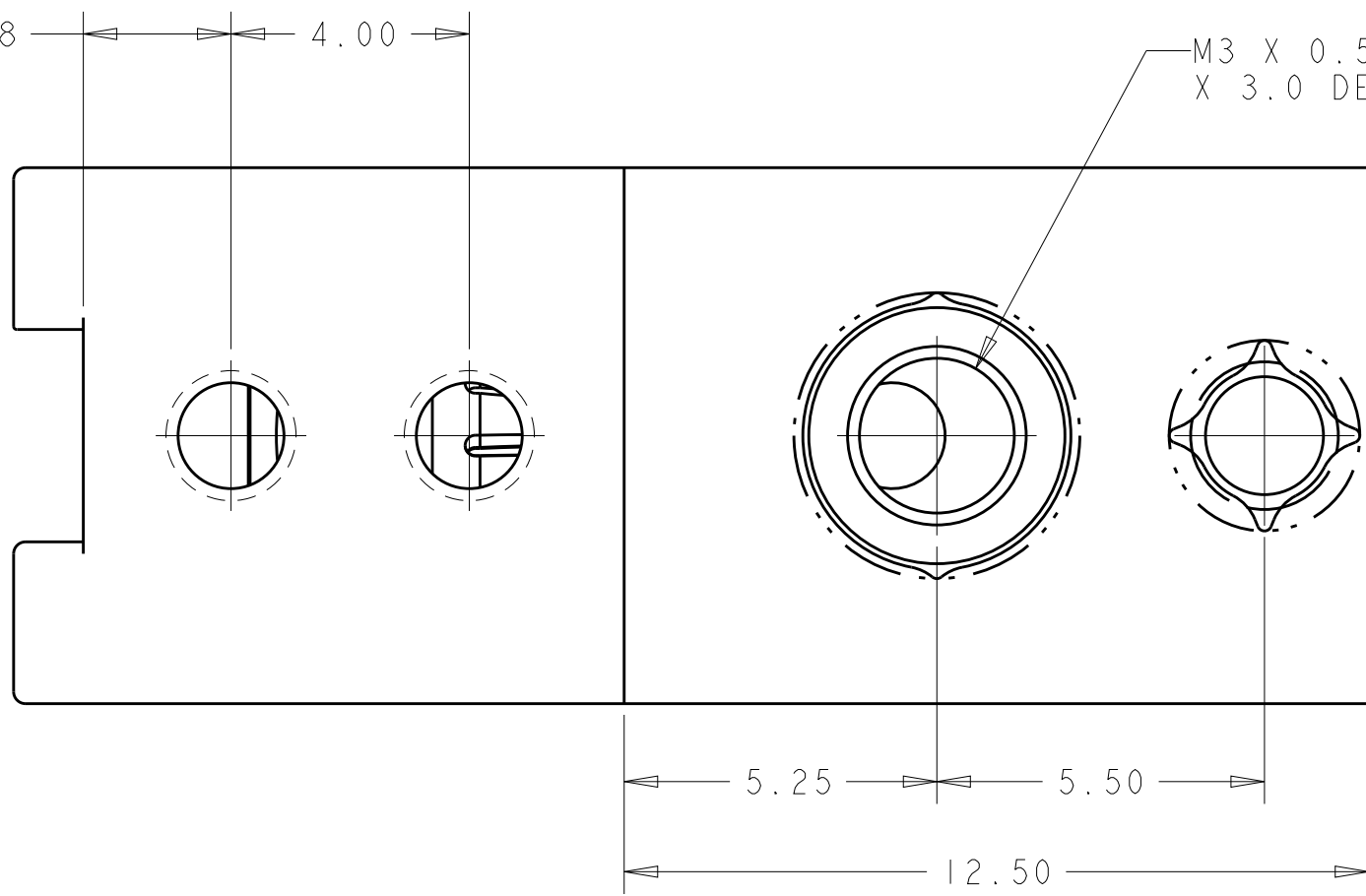
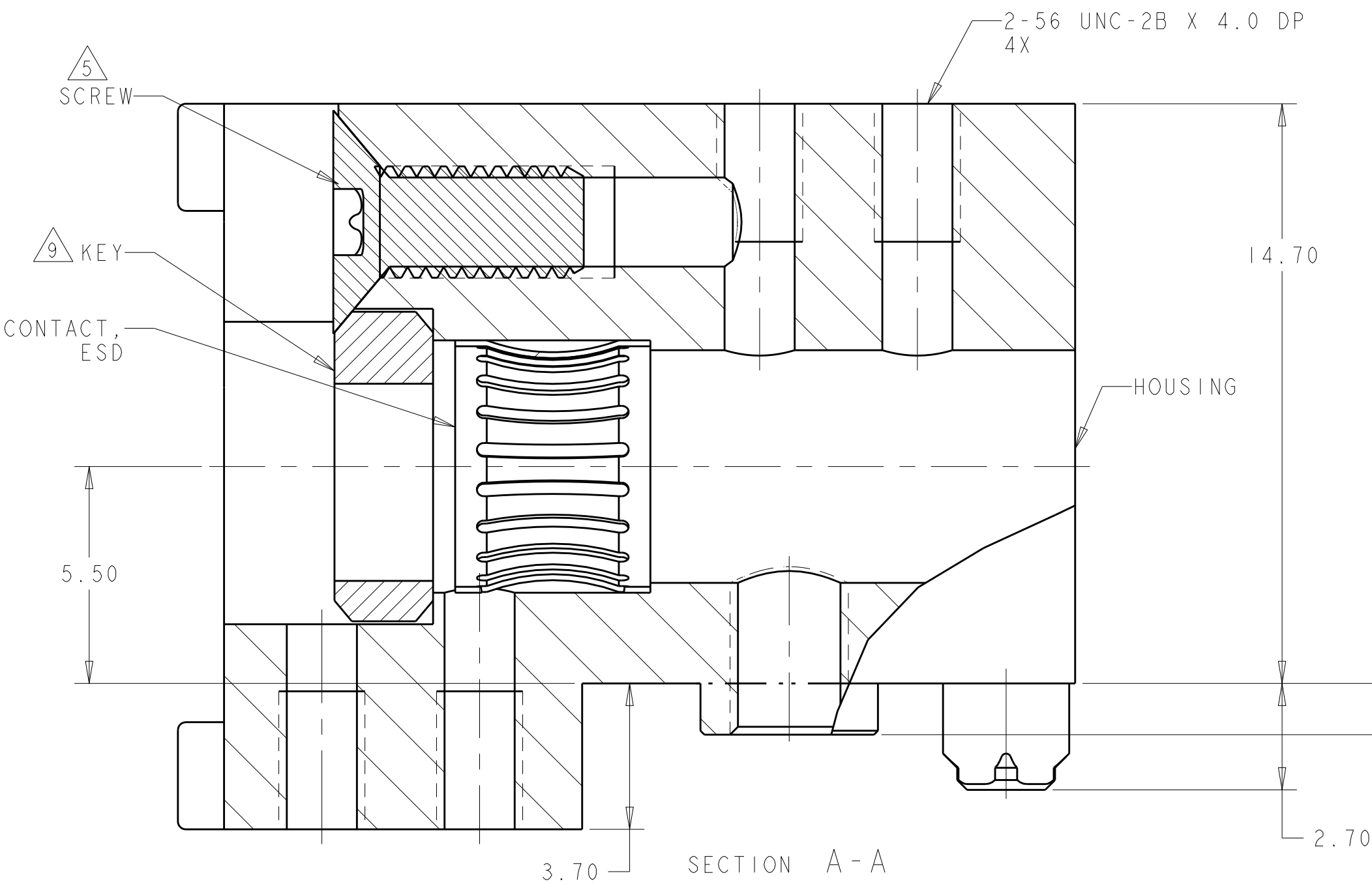
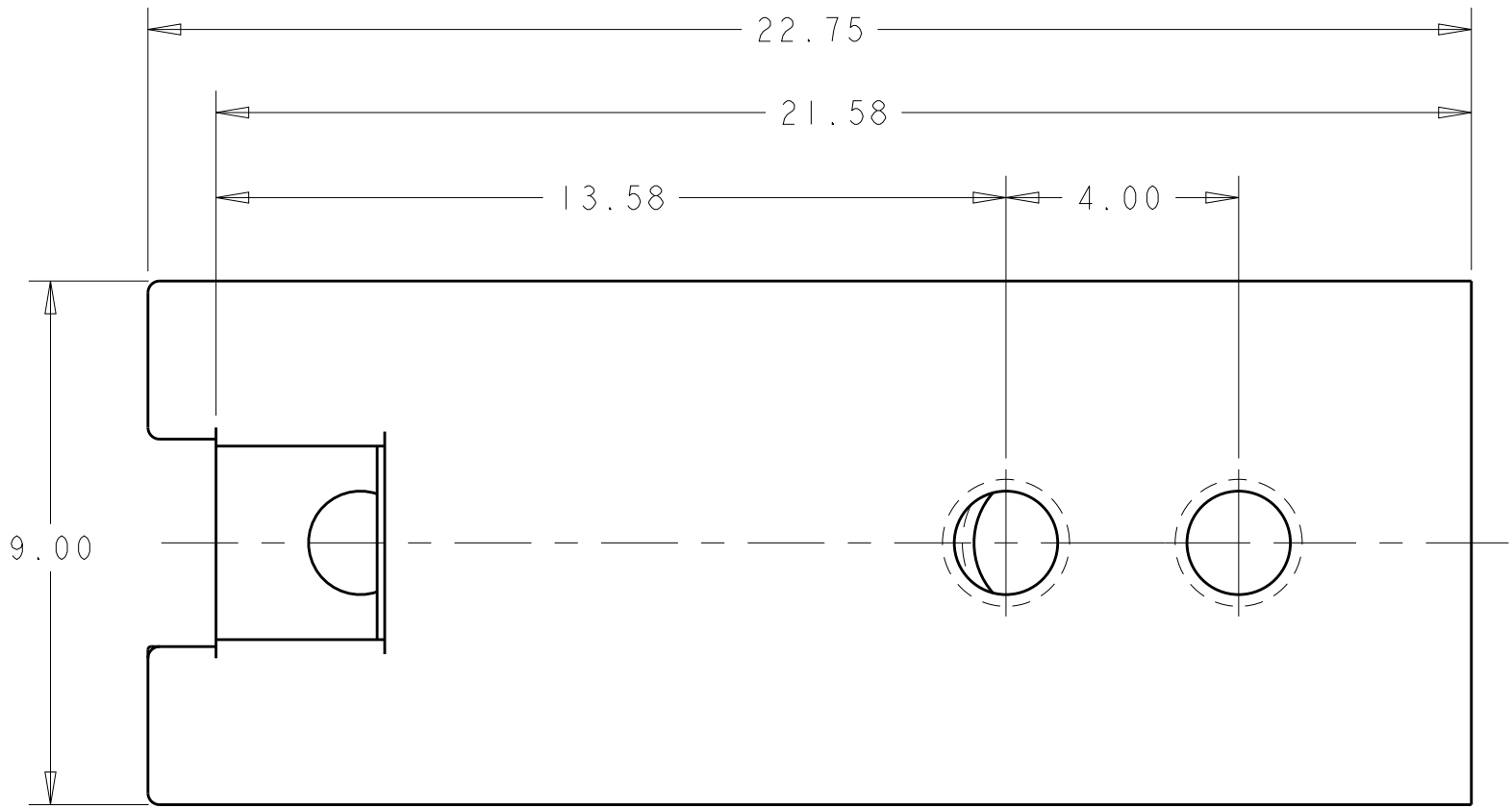
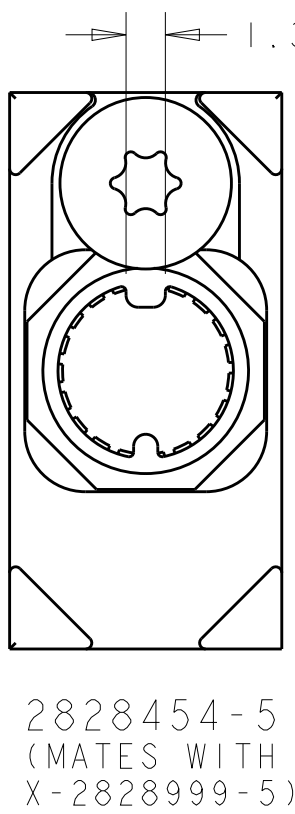
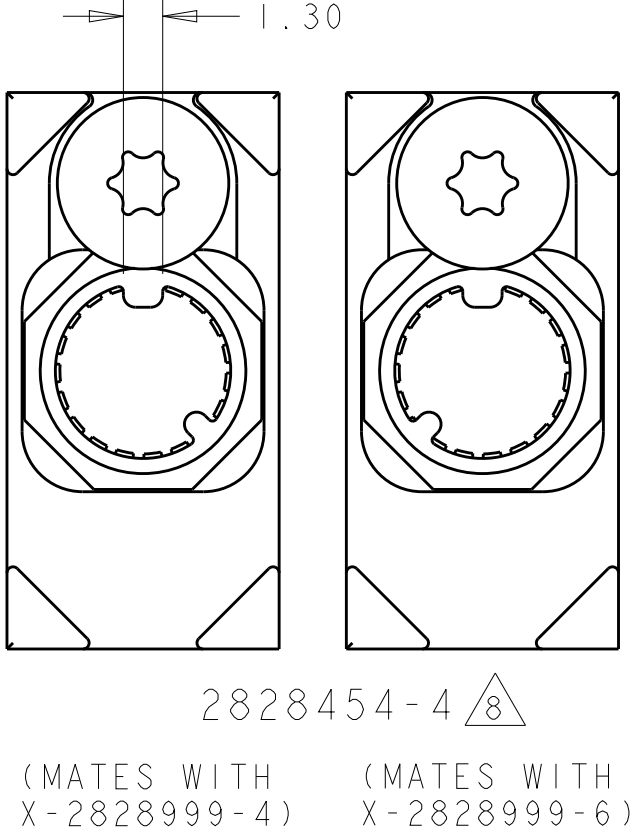
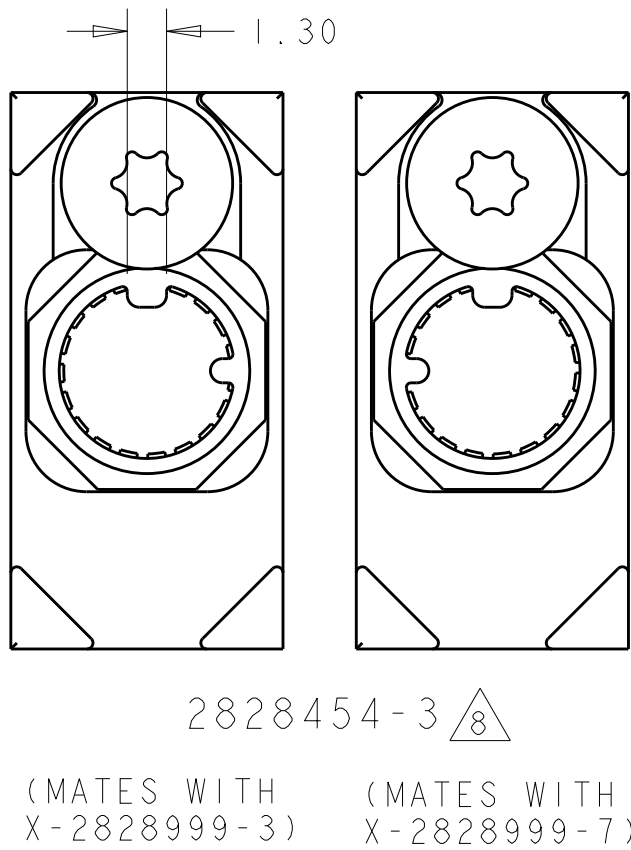
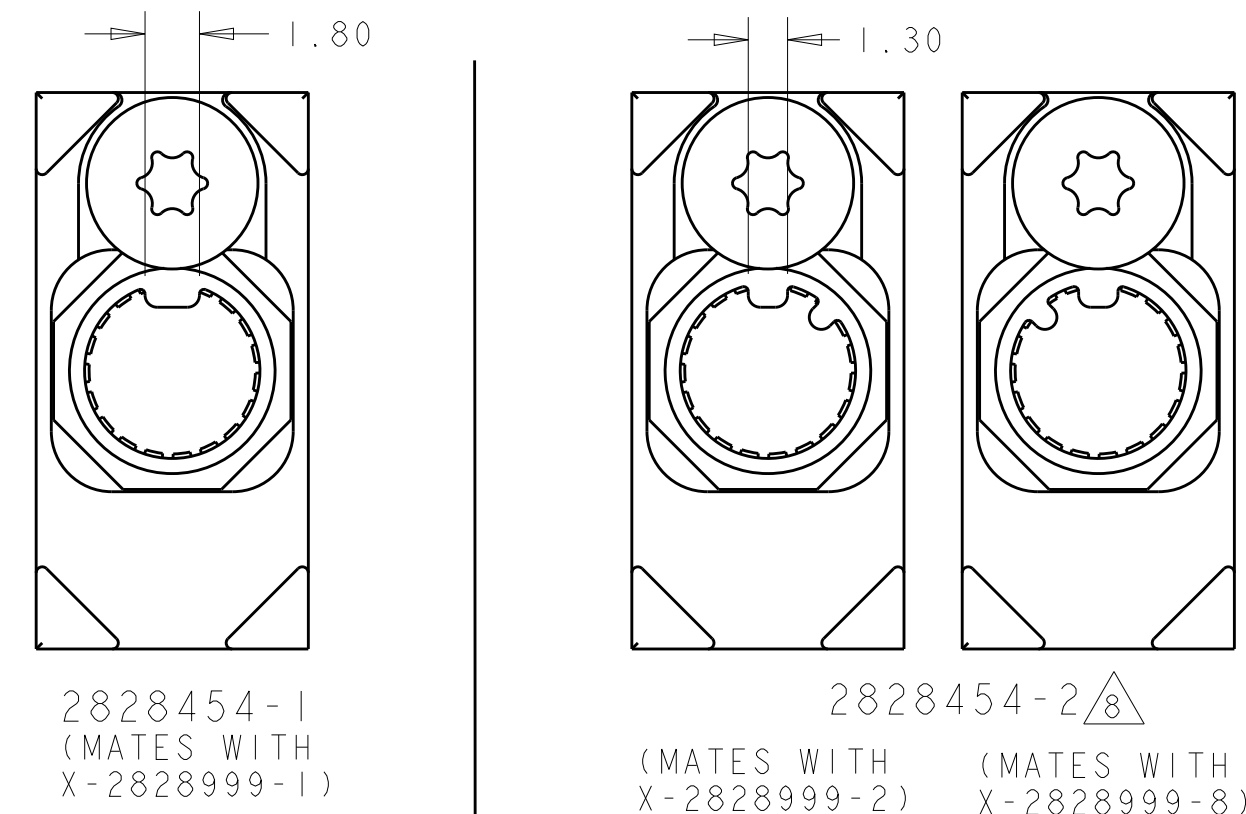
9 KEY CAN BE ROTATED IN INCREMENTS OF 45° CREATING 8  
POSSIBLE KEYING VARIATIONS FOR 2828454-1 AND  
2828454-5 AND 16 POSSIBLE VARIATIONS FOR 2828454-2,  
2828454-3, AND 2828454-4.

10. ESD CONTACT TO BE ASSEMBLED INTO HOUSING. SCREW  
AND KEY SUPPLIED IN KIT FORM.

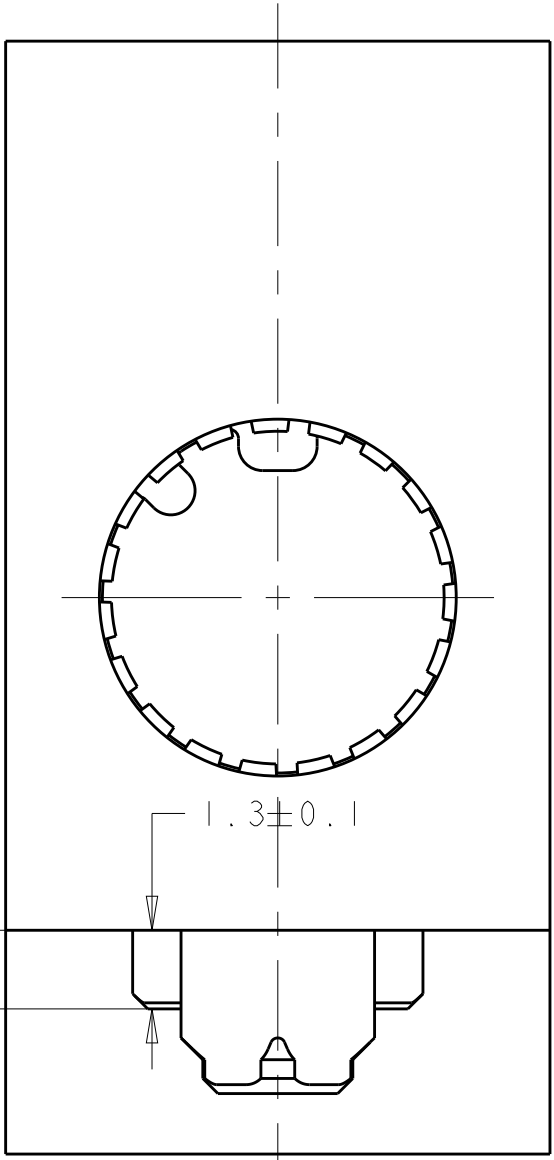


PRIMARY PCB LAYOUT CONNECTOR SIDE

1.5	TIER 2 (7-ROW)
2.25	TIER 2
2.5	TIER 1
DIM B	PRODUCT



REVISIONS					
P	LTR	DESCRIPTION	DATE	DWN	APVD
	A	RELEASED PER ECO 19-001328	1-30-19	CT	DH



180°	2828454-5
135° OR 225°	2828454-4
90° OR 270°	2828454-3
45° OR 315°	2828454-2
	2828454-1
S	PART NUMBER

THIS DRAWING IS A CONTROLLED DOCUMENT.		DWN R. MILLER 03DEC2015	NAME GUIDE MODULE, CLOCKABLE KEYED, 64 POSITION, CUSTOM APERTURE, RIGHT ANGLE, MULTIGIG	
DIMENSIONS:		CHK A. TSANG 03DEC2015		
mm		APVD	PRODUCT SPEC	RESTRICTED TO
TOLERANCES UNLESS OTHERWISE SPECIFIED:		APVD	APPLICATION SPEC	SIZE
0 PLC ±.5				CAGE CODE
1 PLC ±0.13				DRAWING NO
2 PLC ±.1				DATE
3 PLC ±.1				REV
4 PLC ±.1				
ANGLES				
FINISH				
MATERIAL				
WEIGHT				
CUSTOMER DRAWING				