

Actuator

704.732.0



<https://eao.com/p/704.732.0>

Your product:



704.732.0 Actuator

FRONT

Front dimension: 30 mm x 30 mm

Front form: square

MOUNTING

Design: raised

OPERATING-/INDICATION PART

Lens illumination: illuminative

ELECTRICAL CHARACTERISTICS

Standards: The switches comply with the "Standards for low-voltage switching devices" DIN EN 60947-1

MECHANICAL CHARACTERISTIC

Weight: 0.009 kg

Switching action: Maintained

Operating force: 8 N

Mechanical lifetime: ≤3 Mio. cycles of operation

Operating Travel: ca. 5.8 mm ± 0.2 mm

AMBIENT CONDITION

Storage temperature: – 40 °C ... + 85 °C

Operating temperature: – 40 °C ... + 55 °C

IP Protection:

IP65 front side

OTHER

Hints:

Max. 3 switching elements can be clipped on

max. number of switching elements:

3

Housing colour:

Black

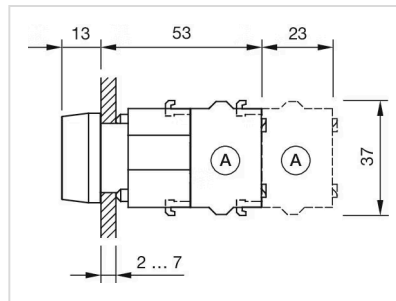
Housing material:

Plastic

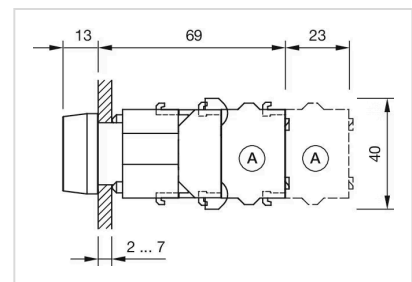
Short Description:

Actuator, 30 mm x 30 mm, illuminative, square, Maintained

Dimension drawings:

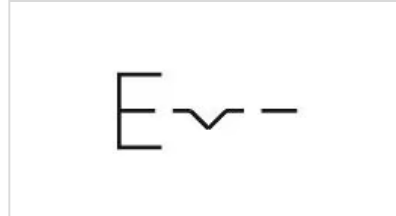


A = Screw terminal

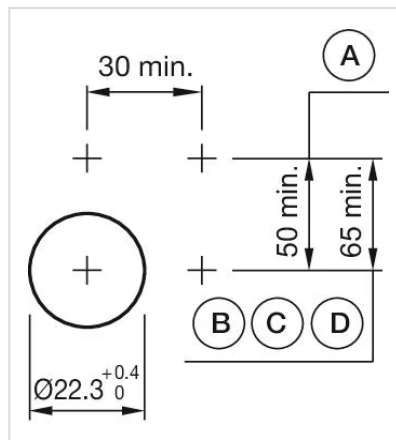


A = Screw terminal

Wiring diagrams:



Mounting cut-outs:



A = Screw terminal

B = Push-in terminal (PIT)

C = Plug-in terminal 6.3 mm x 0.8 mm

D = Double plug-in terminal 6.3 mm x 0.8 mm