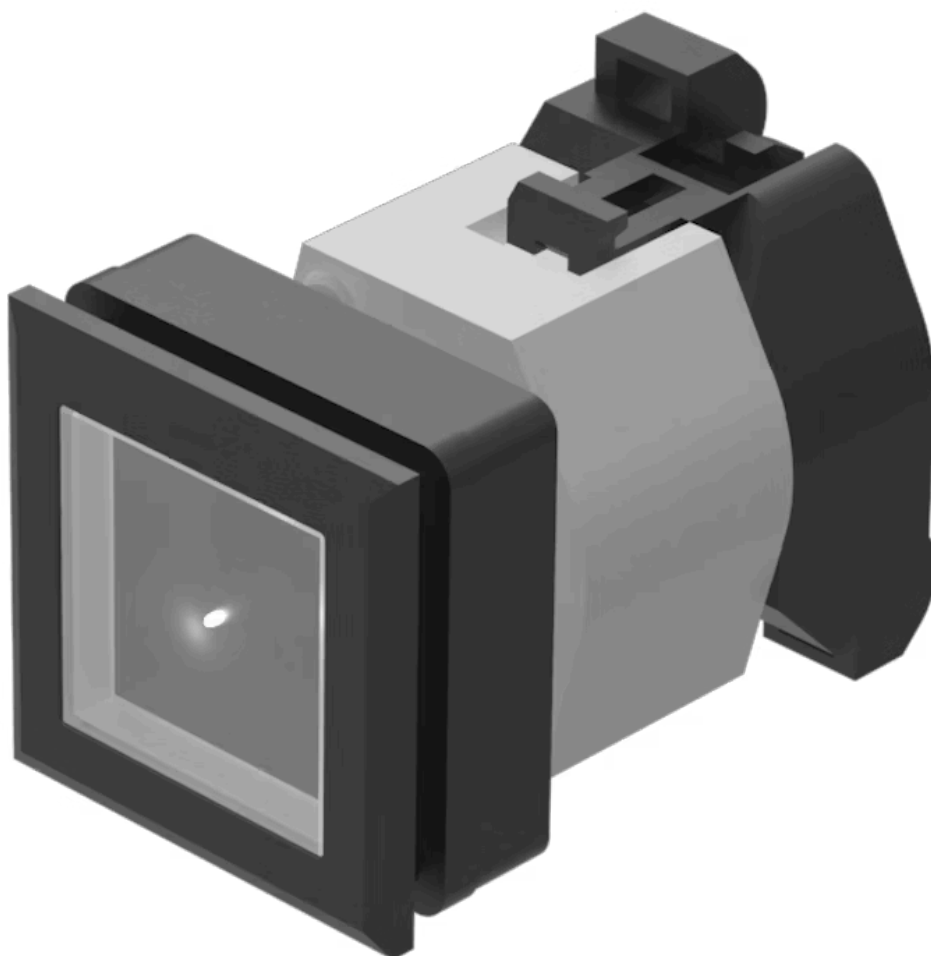


# Actuator

704.259.700



<https://eao.com/p/704.259.700>

Your product:

---



## 704.259.700 Actuator

### FRONT

Front form:	square
Front bezel material:	Plastic
Front dimension:	35 mm x 35 mm
Front bezel colour:	Black

### MOUNTING

Design:	flush
Mounting cut-out:	30 mm x 30 mm

### OPERATING-/INDICATION PART

Lens material:	Plastic
Lens colour:	Colourless
Lens shape:	flush
Lens optics:	transparent
Lens illumination:	illuminative

### ELECTRICAL CHARACTERISTICS

Standards:	The switches comply with the "Standards for low-voltage switching devices" DIN EN 60947-1
------------	---

### MECHANICAL CHARACTERISTIC

Mechanical lifetime:	≤3 Mio. cycles of operation
Operating Travel:	ca. 5.8 mm ± 0.2 mm

<b>Weight:</b>	0.051 kg
<b>Terminal:</b>	Screw terminal
<b>Switching action:</b>	Maintained
<b>Operating force:</b>	6.2 N

#### AMBIENT CONDITION

<b>IP Protection:</b>	IP65 front side
<b>Storage temperature:</b>	– 40 °C ... + 85 °C
<b>Operating temperature:</b>	– 40 °C ... + 55 °C

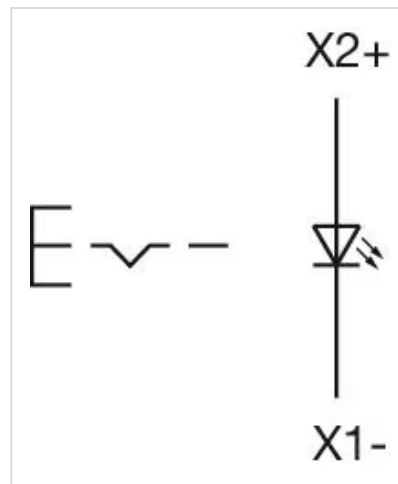
#### OTHER

<b>Housing material:</b>	Plastic
<b>max. number of switching elements:</b>	3
<b>Housing colour:</b>	Black

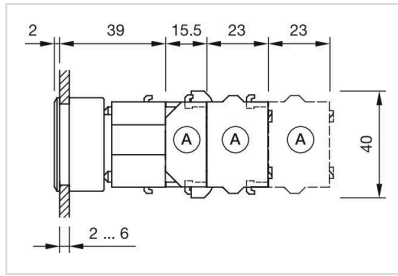
**Hints:** Max. 3 switching elements can be clipped on, The lamp block will be delivered with screw terminal

**Short Description:** Actuator, 30 mm x 30 mm, 35 mm x 35 mm, flush, illuminative, Colourless, Plastic, transparent, square, Black, Plastic, Maintained, Screw terminal

#### Wiring diagrams:

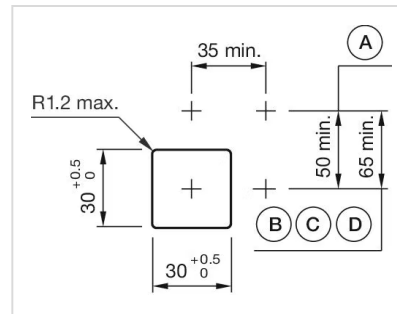


#### Dimension drawings:



A = Screw terminal

### Mounting cut-outs:



A = Screw terminal

B = Push-in terminal (PIT)

C = Plug-in terminal 6.3 mm x 0.8 mm

D = Double plug-in terminal 6.3 mm x 0.8 mm