

THIS COPY IS PROVIDED ON A RESTRICTED BASIS AND IS NOT TO BE USED IN ANY WAY DETRIMENTAL TO THE INTERESTS OF PANDUIT CORP.

PANDUIT PART #	WIRE RANGE AWG [mm <sup>2</sup> ]	TAB SIZE INCH [mm]	DIMENSIONS in. [mm]		
			L± .03 [0,8]	H± .01 [0,3]	W± .01 [0,3]
ED18-250	#22-18 [0,5-1,0]	.250 X .032 [6,3 X 0,8]	.66 [16,8]	.12 [3,0]	.30 [7,6]
ED14-250*	#16-14 [1,5-2,5]	.250 X .032 [6,3 X 0,8]	.66 [16,8]	.12 [3,0]	.30 [7,6]



LISTED  
20H3  
E78522



CERTIFIED  
LR31212

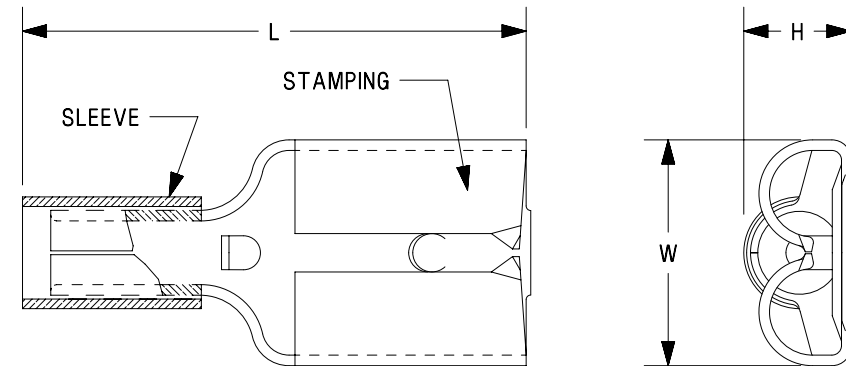


RECOGNIZED  
E78522

\* UL RECOGNIZED ONLY

NOTES:

- USED FOR:
  - A. STRANDED COPPER WIRE ONLY
  - B. 302°F [150°C] MAX OPERATING TEMPERATURE
  - C. 2000V MAX VOLTAGE
- MATERIAL:
  - A. STAMPING: .016 [0,41] TIN PLATED BRASS
  - B. SLEEVE: TIN PLATED BRASS
- INSTALLATION TOOLS:
  - A. UL LISTED AND CSA CERTIFIED: CT-100A, CT-200, CT-570, CT-1570, CT-2457CH, CT-2500 W/CT-2570CH
  - B. UL RECOGNIZED: CT-100A, CT-200, CT-600-A W/CT-570CH, CT-1570, CT-2457CH, CT-2500 W/CT-2570CH
- WIRE STRIP LENGTH: 9/32" <sup>+1/32</sup> <sub>-0</sub> [7,1mm <sup>+0,8</sup> <sub>-0</sub>]
- SEE WWW.PANDUIT.COM FOR PACKAGE QUANTITIES INDICATED BY PART NUMBER SUFFIX
- DIMENSIONS IN BRACKETS ARE METRIC EQUIVALENT



TITLE <b>STRONGHOLD FEMALE DISCONNECT (250 SERIES)                  NON-INSULATED, SLEEVED BARREL #22-14 AWG</b> CUSTOMER DRAWING				
ITEM REVISION NAME		00123SHD/00		
DATASET FILE NAME		00123SHD_DC_00A		
UNLESS OTHERWISE SPECIFIED, DIMENSIONAL TOLERANCES ARE: IN [mm]		MATERIAL:		
.x ± .1 [2.54]		.xxx ± .005 [0.127]		
.xx ± .01 [0.25]		ANGLES ± 5°		
THIRD ANGLE PROJECTION		SEE NOTES		
DRAWN BY		DRAWING NUMBER:		
TMR		SH41304		
DATE		SCALE		
10.10.17		N.T.S.		
CHK		SHEET 1 OF 1		
JHNU		A		

00	10.10.17	TMR	JHNU	RGB	DRAWING RELEASED	00123SH
REV	DATE	BY	CHK	APR	DESCRIPTION	ECN

D10100DA/12