

REVISIONS			
REV	DESCRIPTION, ECN, EAR NO.	DATE	APP'D
B	PRODUCT DRAWING PER EAR 15199	OCT20/22	E.Q

NOTES:

- ALL MATERIALS ARE RoHS COMPLIANT.
 - INSULATOR: GLASS-FILLED THERMOPLASTIC PBT, UL94V-0, BLACK.
 - CONTACT: BRASS, GOLD FLASH PLATED ON MATING AREA, TIN PLATED ON SOLDER TAIL.
 - FRONT SHELL: STEEL, TIN PLATED OVER COPPER.
 - BACK SHELL: STEEL, TIN PLATED OVER COPPER.
 - BOARDLOCK: BRASS, TIN PLATED.
 - HEX JACK SOCKET: STEEL, NICKEL PLATED.
- ELECTRICAL CHARACTERISTICS
 - CURRENT RATING: 3A MAXIMUM.
 - DIELECTRIC WITHSTANDING VOLTAGE: 1000 VAC 60HZ FOR 1 MINUTE.
 - CONTACT RESISTANCE: 20 MILLIOHMS MAXIMUM.
 - INSULATION RESISTANCE: 5000 MΩ AT DC 500V.
 - VOLTAGE RATING: 250 VAC.
- OPERATING TEMPERATURE: -25°C TO +85°C.

ORDERING CODE: NFD17-X XXPB-FE1D-A

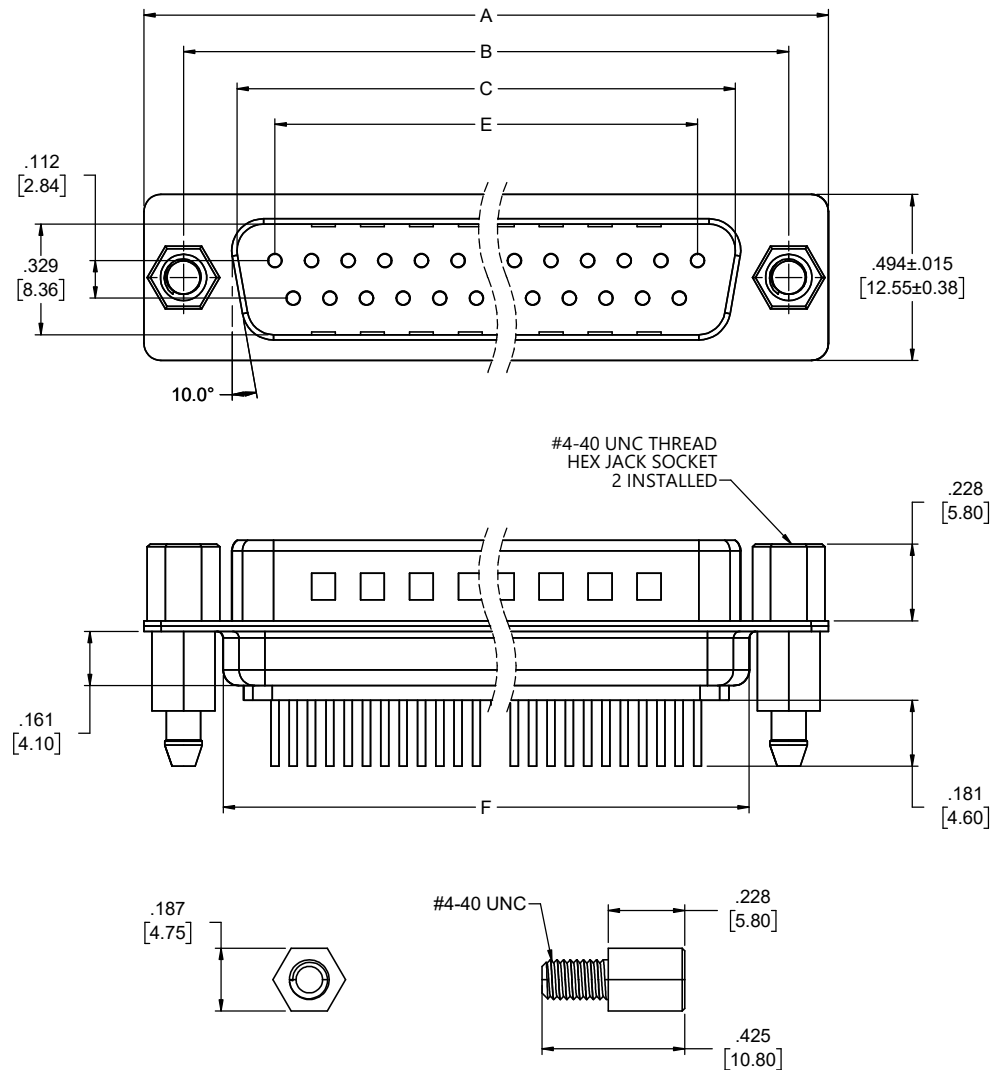
SHELL SIZE: NUMBER OF CONTACTS:

E: 09 SIZE 09: 09 POSITION

A: 15 SIZE 15: 15 POSITION

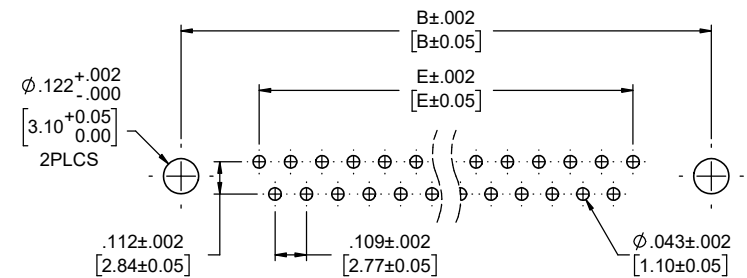
B: 25 SIZE 25: 25 POSITION

C: 37 SIZE 37: 37 POSITION



#4-40 UNC HEX JACK SOCKET INSTALLED (REMOVABLE)

POSITIONS	A±.015 [0.38]	B±.005 [0.13]	C±.005 [0.13]	E±.005 [0.13]	F±.05 [1.27]
9	1.213 [30.81]	.984 [24.99]	.666 [16.92]	.432 [10.97]	.759 [19.28]
15	1.543 [39.20]	1.311 [33.30]	.994 [25.25]	.756 [19.20]	1.083 [27.51]
25	2.086 [53.05]	1.852 [47.04]	1.534 [38.96]	1.304 [33.12]	1.625 [41.275]
37	2.732 [69.40]	2.5 [63.50]	2.182 [55.42]	1.956 [49.68]	2.272 [57.71]



RECOMMENDED PCB LAYOUT

UNLESS SPECIFIED OTHERWISE		DRAWN	ED.LIU	OCT17/22	Amphenol Canada Corp. Commercial Products	
PRIMARY UNITS	INCHES	CHECKED	F.WANG	OCT20/22		
SECONDARY	MILLIMETERS	M.E. APP'D			NFD17 SERIES MALE D-SUB CONNECTOR, VERTICAL, 9 TO 37 CONTACTS, SOLDER PIN, MOUNTING 4-40 UNC, WITH HEX JACK SOCKET, RoHS COMPLIANT	
REFERENCE IN PARENTHESES		O.A. APP'D				
GENERAL TOLERANCES		DWG APPR.	E.QU	OCT20/22	P-NFD17-XXXPB-FE1D-A	
1 DECIMAL PLACE		ENG. REL. NO.	EAR 15199			
2 DECIMAL PLACES		REF.			DWG. NO.	REV
3 DECIMAL PLACES	±.013					
ANGULAR DEGREES	±5°	THIRD ANGLE PROJECTION				
		DO NOT SCALE DRAWING				
		CODE ID NO.	03554	DWG SIZE: X	SCALE: 4:1	SHEET 1 OF 1