

# Pushbutton, illuminated pushbutton with connector M12, Ø 22 mm, stainless steel 316L

82-6657.1000



<https://eao.com/p/82-6657.1000>

Your product:

---



82-6657.1000

Pushbutton, illuminated pushbutton with connector M12, Ø 22 mm, stainless steel 316L

#### FRONT

Front bezel material:	Stainless steel 316L
Front form:	round

#### MOUNTING

Mounting cut-out:	Ø 22 mm
-------------------	---------

#### OPERATING-/INDICATION PART

Lens material:	Stainless steel 316L
Lens shape:	flush
Lens optics:	opaque
Lens colour:	Silver
Lens illumination:	non illuminative

#### ELECTRICAL CHARACTERISTICS

Pollution degree:	2, according to EN IEC 60947-1
Electrical lifetime:	50 000 cycles of operation
Rated Operational Voltage Ue:	250 VAC
Thermal current Ith:	5 A
Rated insulation voltage Ui:	250 V
Electric strength:	1500 VAC, 50 Hz 1 minute between life terminals and ground

#### MECHANICAL CHARACTERISTIC

<b>Terminal:</b>	Connector M12 (5 pins)
<b>Tightening torque:</b>	0.5 ... 0.6 Nm
<b>Mechanical lifetime:</b>	1 Mio. cycles of operation
<b>Operating force:</b>	4 N ... 7 N
<b>Switching system:</b>	Snap-action switching element
<b>Operating Travel:</b>	ca. 3 mm
<b>Switching action:</b>	Momentary
<b>Weight:</b>	0.043 kg

## AMBIENT CONDITION

<b>IP front protection:</b>	IP65, IP67
<b>Operating temperature:</b>	– 30 °C ... + 70 °C
<b>Storage temperature:</b>	– 40 °C ... + 80 °C
<b>Shock resistance:</b>	Max. 500 m / s <sup>2</sup> as per IEC 60068-2-27
<b>Vibration resistance:</b>	10 ... 500 Hz, amplitude 1.5 mm p-p according to IEC 60068-2-6
<b>Climate resistance:</b>	Damp heat, 21 days according to IEC 60512-11

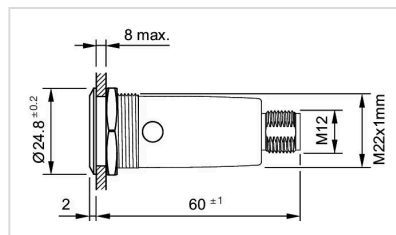
## CERTIFICATE

<b>Conformities:</b>	CE, 2011 / 65 / EC (RoHS), 2014 / 35 / EU (LVD)
----------------------	---

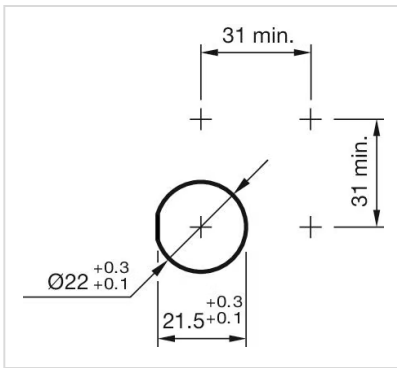
## OTHER

<b>Short Description:</b>	Pushbutton, illuminated pushbutton with connector M12, Ø 22 mm, stainless steel 316L, Momentary, 35 V AC/DC @ 0,6 A, Connector M12 (5 pins), round, Stainless steel 316L, Silver
---------------------------	--

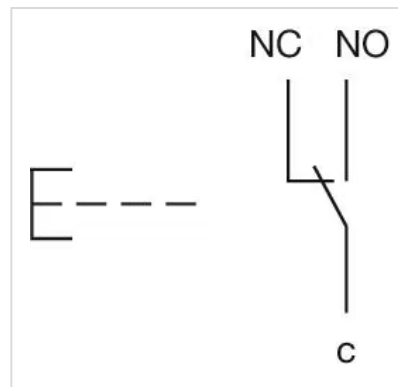
## Dimension drawings:



## Mounting cut-outs:



**Wiring diagrams:**



**Component layouts:**

