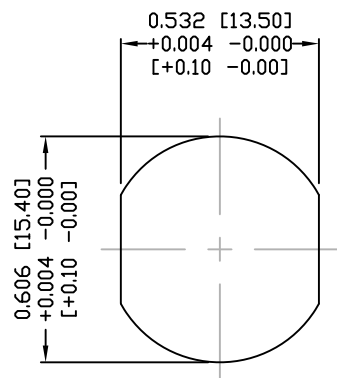
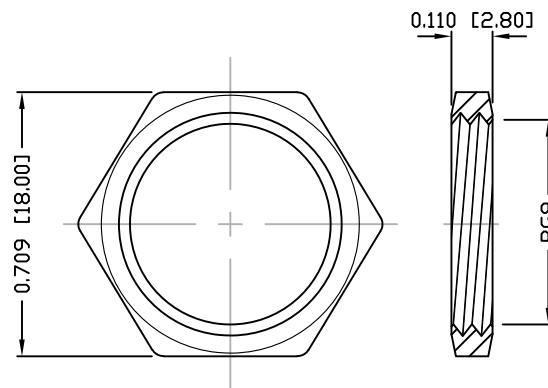


DESCRIPTION: M12 FEMALE - PANEL MOUNT (REAR) - 4 POS.



PANEL CUTOUT



NUT

NOTE:

MATERIAL

HOUSING:

PBT UL94V-0, BLACK

CONTACT:

BRASS

NUT:

BRASS

SHELL:

BRASS

O-RING:

EPDM, BLACK

FINISH

CONTACT:

GOLD PLATED  
OVER 50u" NICKEL  
NICKEL PLATED  
NICKEL PLATED

NUT:

SHELL:

ELECTRICAL

RATED CURRENT:

4A

RATED VOLTAGE:

250V

INSULATION RESISTANCE:

100 MOhms MIN.

CONTACT RESISTANCE:

10 mOhms MAX.

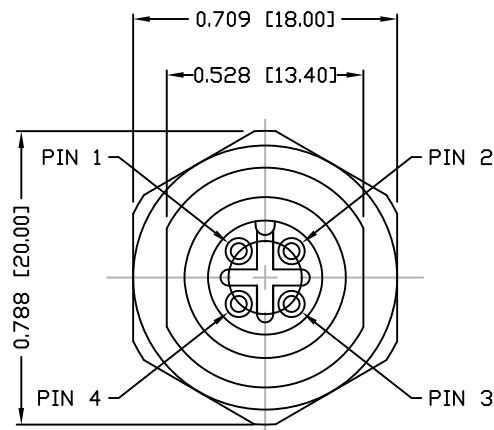
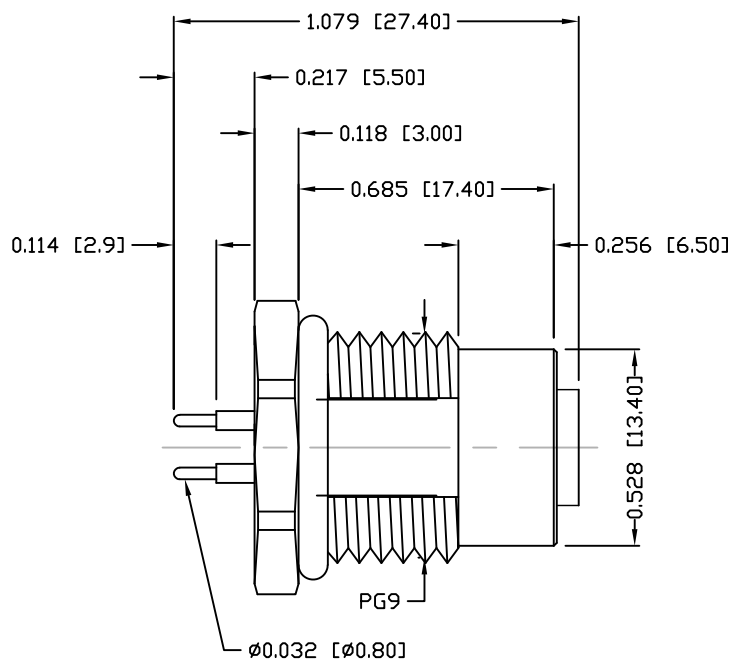
WATER PROOF:

IP67

ENVIRONMENT

OPERATION TEMPERATURE:

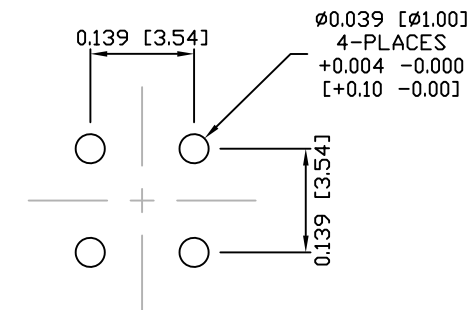
-40°C TO +85°C



860-004-213R00Y

3 = BRASS/NICKEL SHELL & NUT  
S = STAINLESS STEEL SHELL & NUT

1 = GOLD FLASH  
4 = 10u" GOLD



PCB LAYOUT

RoHS COMPLIANT

UNITS = INCHES [MM]

DO NOT SCALE FROM DRAWING



THESE DRAWINGS AND SPECIFICATIONS ARE THE PROPERTY OF NorComp AND SHALL NOT BE REPRODUCED, COPIED OR USED AS THE BASIS FOR THE MANUFACTURE OR SALE OF APPARATUS WITHOUT WRITTEN PERMISSION.

DRAWN:

M. SIGMON

DATE:

03-07-16

NorComp

SCALE:

NTS

SHEET

1

OF

1

REV

4

DWG NO.

860-004-213R00Y