

Actuator

704.411.010KN



<https://eao.com/p/704.411.010KN>

Your product:



704.411.010KN Actuator

FRONT

Front dimension:	Ø 35 mm
Front bezel colour:	Black
Front bezel material:	Aluminium

MOUNTING

Design:	flush
Mounting cut-out:	Ø 30.5 mm

OPERATING-/INDICATION PART

Lever shape:	short
Lever material:	plastic
Lever colour:	Black

MECHANICAL CHARACTERISTIC

Weight:	0.056 kg
---------	----------

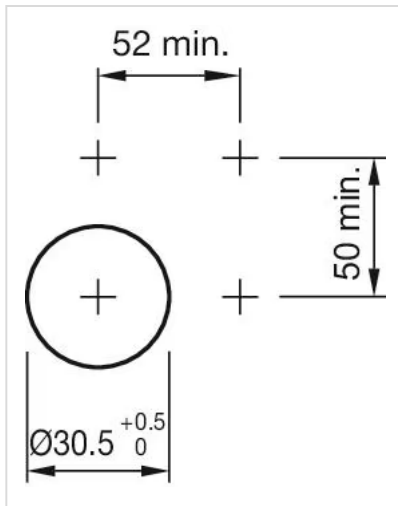
OTHER

max. number of switching elements:	1
------------------------------------	---

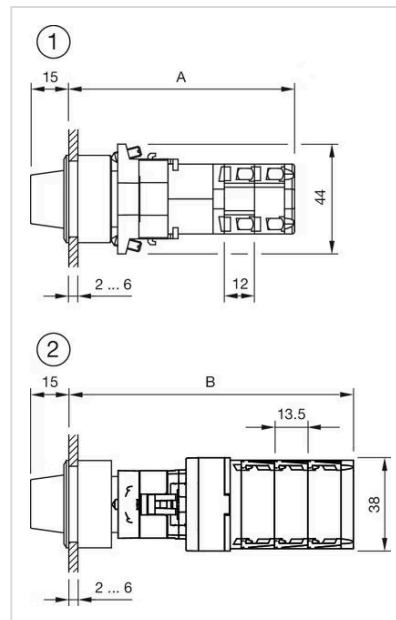
Hints:	The colour of anodised aluminium parts can vary due to technical production reasons
--------	---

Short Description:	Actuator, Ø 30.5 mm, Ø 35 mm, non illuminative, Black, short, Black, Aluminium, anodised
--------------------	--

Mounting cut-outs:



Dimension drawings:



- 1 = Kraus & Naimer switching element
 $A = (\text{Number of stages} \times 12) + 66.5 \text{ mm}$
 2 = Santon switching element
 $B = (\text{Number of stages} \times 13.5) + 65.5 \text{ mm}$