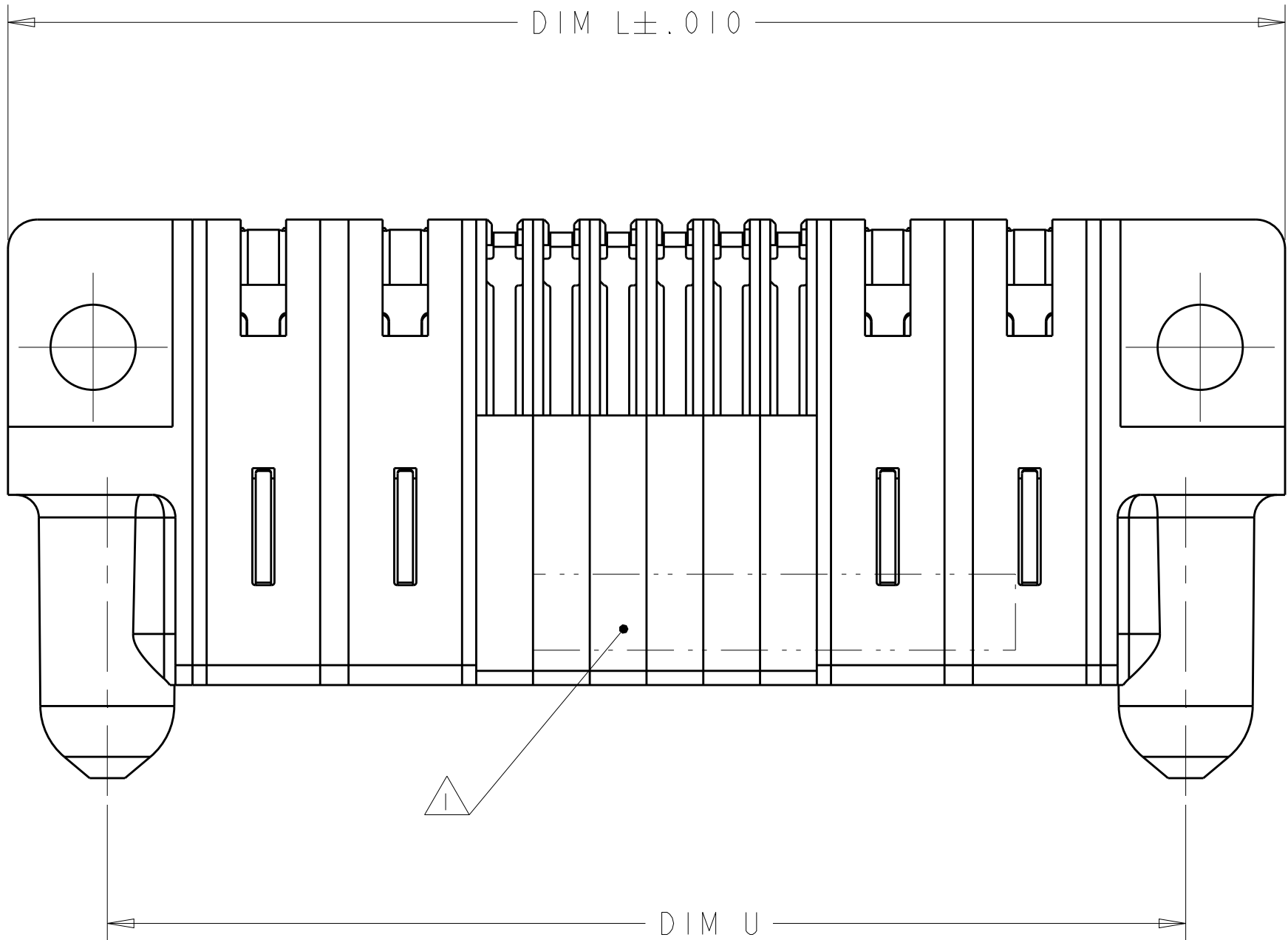
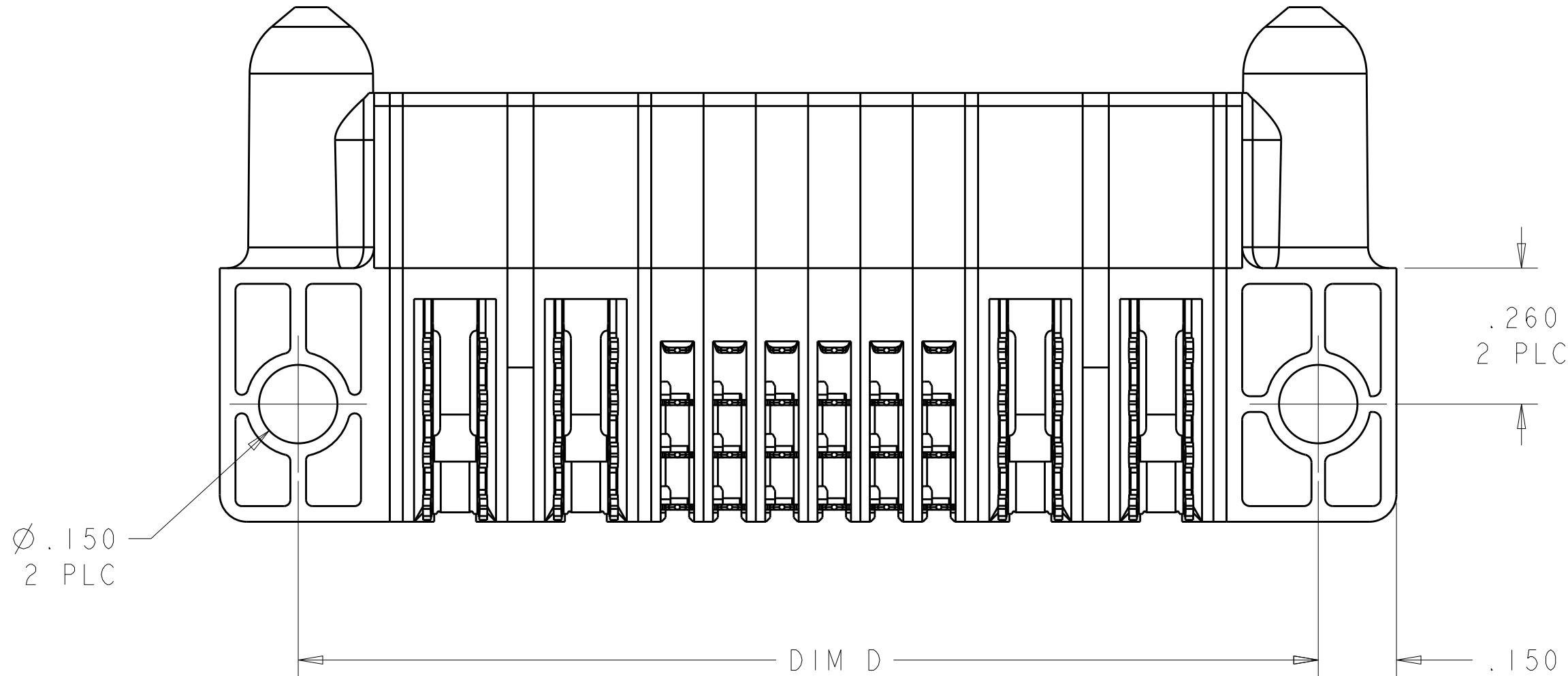
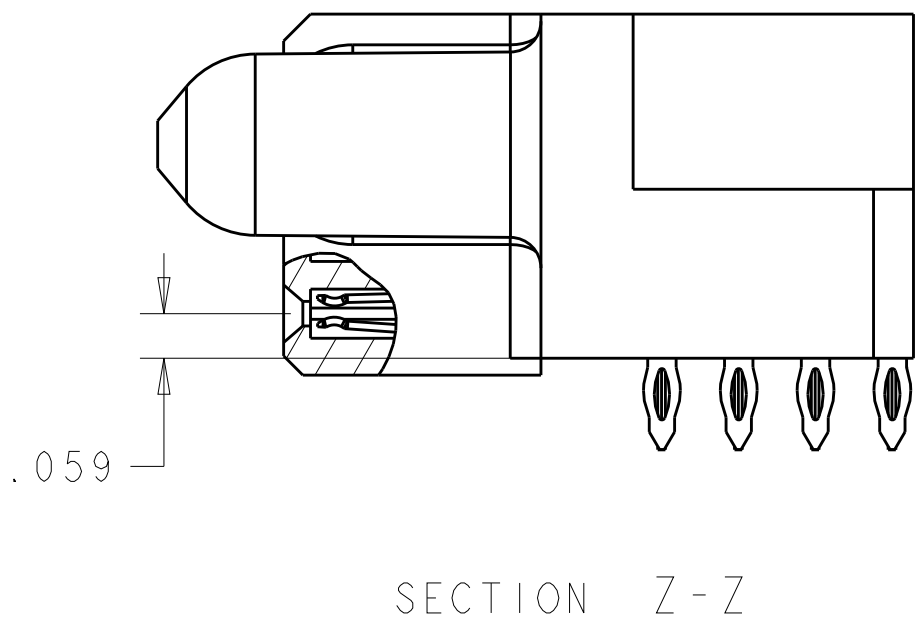
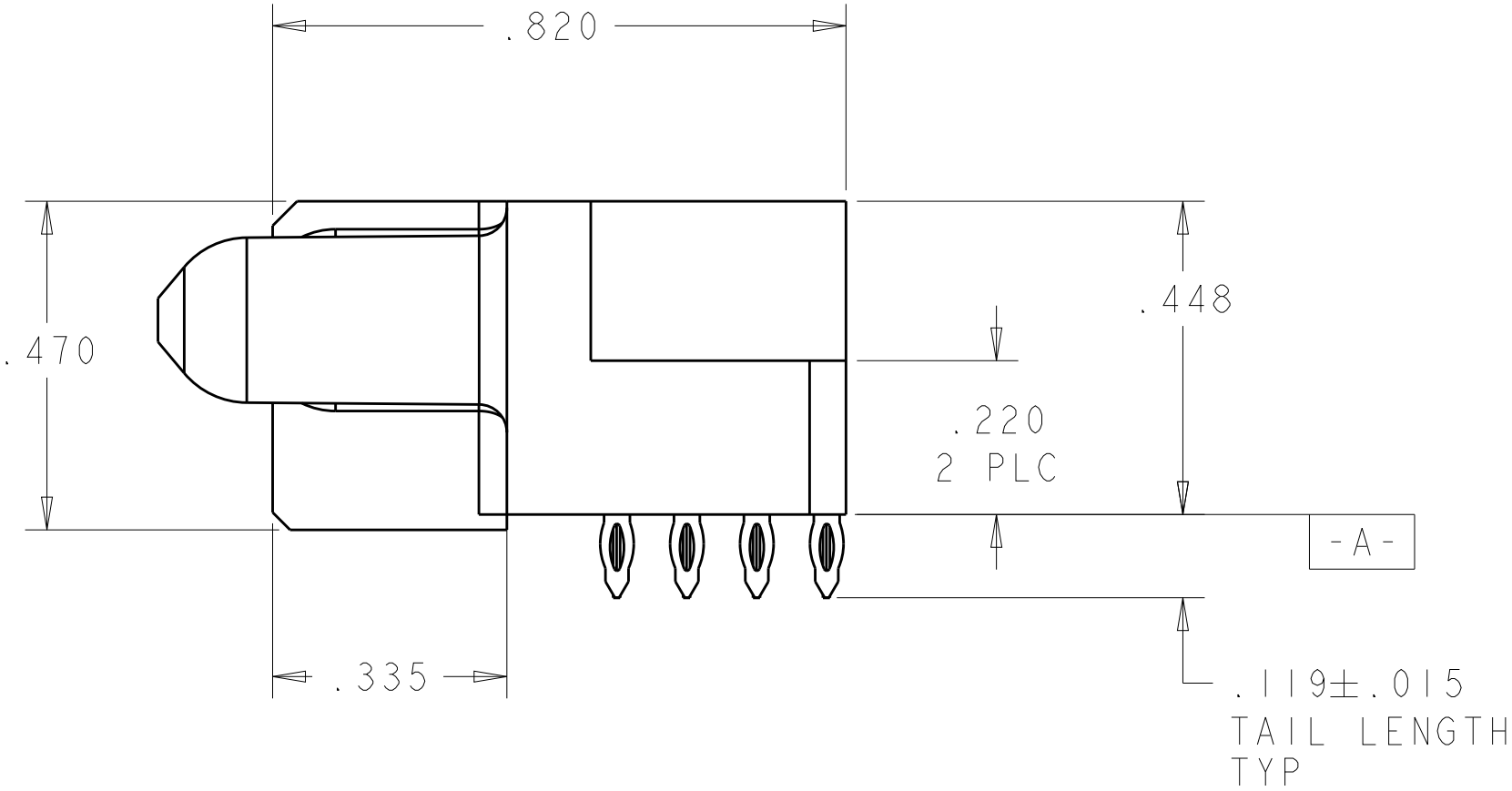
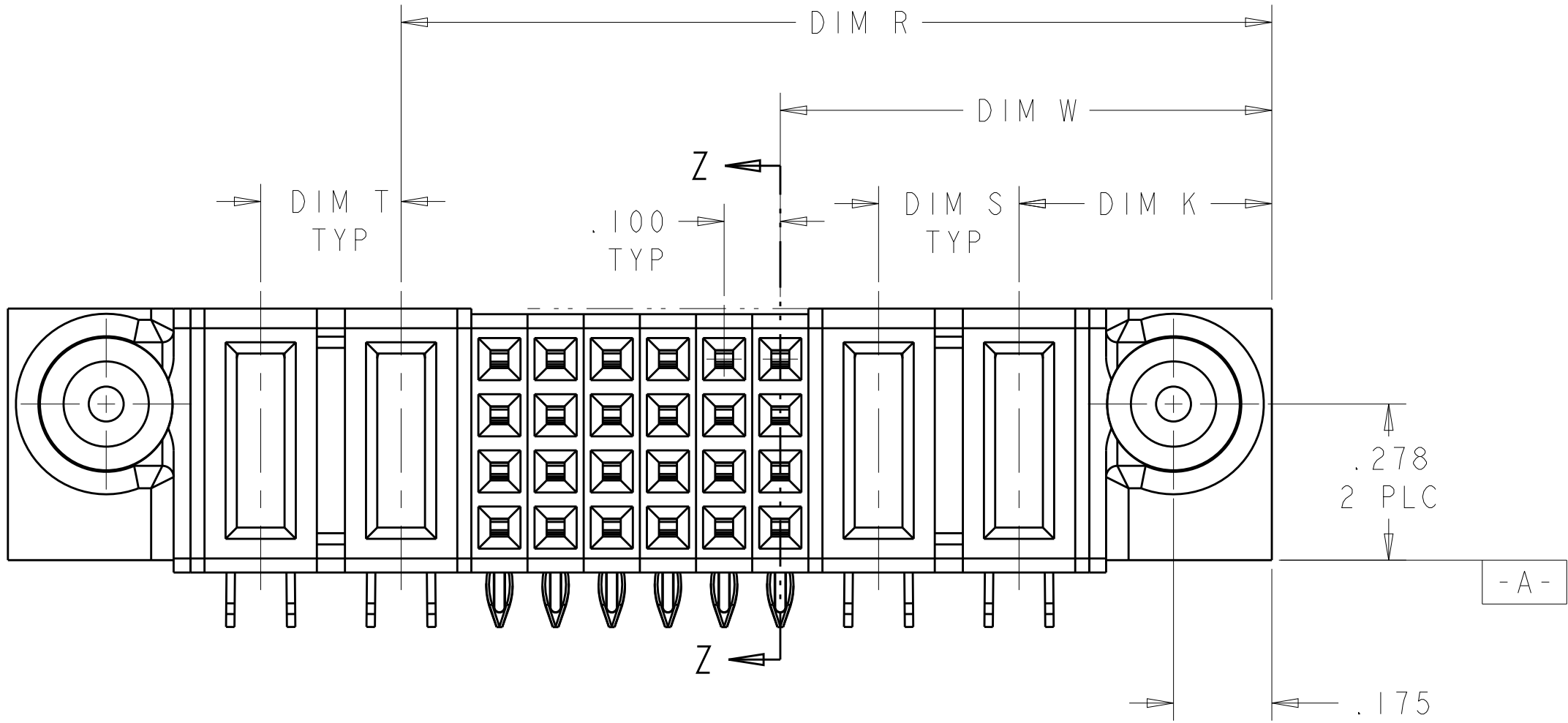




LOC	DIST	REVISIONS					
		P	LTR	DESCRIPTION	DATE	DWN	APVD
ES	00		A2	REV PER ECR-13-004638	20MAR2013	ML	SZ



- 1 "AMP", PART NUMBER, AND DATE CODE TO BE MARKED IN AREA SHOWN
- 2 MATERIAL: HOUSING - GLASS FILLED HIGH TEMP THERMO PLASTIC, UV94 V-O
SIGNAL CONTACT - COPPER ALLOY
POWER CONTACT - HIGH CONDUCTIVITY COPPER ALLOY
- 3 CONTACT PLATING: NOBLE METAL PLATING ON CONTACT FUNCTIONAL AREA OF POWER AND SIGNAL CONTACTS
- 4 MECHANICAL CONNECTOR KEEP OUT ZONE
- 5 DATUM AND BASIC DIMENSIONS ESTABLISHED BY CUSTOMER
- 6 PCB - ALL HOLE DIAMETERS ARE FINISHED HOLE SIZES
- 7 PCB - .0453 ±.0010 DRILLED HOLE PLATED WITH .0003 MIN Sn OVER .001-.003 PLATING TO ACHIEVE A .040 HOLE
- 8 POWER CONTACT AREA LUBRICATED WITH LUBRICANT
- 9 NOT RELEASED FOR PRODUCTION



9	1.900	.250	.250	1.550	.875	1.950	2.250	.450	2P + 24S + 2P	1892550-2
9	1.900	.250	.250	1.550	.875	1.950	2.250	.450	2P + 24S + 2P	1892550-1
	U	T	S	R	W	D	L	K	DESCRIPTION	PART NUMBER

THIS DRAWING IS A CONTROLLED DOCUMENT.				DWN C. ZHOU 26MAY2007	 TE Connectivity				
				CHK S. ZHAO 26MAY2007					
DIMENSIONS: INCHES		TOLERANCES UNLESS OTHERWISE SPECIFIED:			APVD S. YAO	NAME			
		0 PLC ±.0	+	0	RIGHT ANGLE RECEPTACLE ASSEMBLY W/ GUIDES, PRESS FIT CONTACT MULTI-BEAM XL				
		1 PLC ±.01	+	01					
		2 PLC ±.005	+	005					
		3 PLC ±.0020	+	0020					
		ANGLES ±.2°	+	2°					
FINISH					APPLICATION SPEC				
					108-1973				
					APPLICATION SPEC				
					114-13038				
					WEIGHT				
					-				
MATERIAL					SIZE CAGE CODE DRAWING NO				
-2					A100779C=1892550				
					RESTRICTED TO				
					-				
					Customer Drawing				
					SCALE 4:1 SHEET 1 OF 2 REV A2				

