

This drawing involves proprietary design rights of Tyco Electronics Corporation, and all design, manufacture, reproduction, use and sale rights regarding the same are expressly reserved. It is submitted for a specific purpose and the recipient by accepting this drawing, assumes custody and control and agrees to take reasonable precautions; (a) that this drawing will not be copied and reproduced, in whole or in part, or its contents revealed in any manner, or to any person except to meet the purpose for which it was delivered and (b) that any special features peculiar to this design will not be incorporated in other projects without the expressed written permission of Tyco Electronics Corporation.

REVISIONS			
EC	REV	DESCRIPTION	DATE
CPR	A	NEW RELEASE	12/17/05

NOTES: UNLESS OTHERWISE SPECIFIED;

1. PART NUMBER CHANGES AND OR DESIGN CHANGES AFFECTING ITEM INTERCHANGEABILITY REQUIRE PRIOR ELCON APPROVAL AND AUTHORIZATION BY REVISION TO THIS DRAWING.

2. MATERIALS:

INSULATORS: THERMOPLASTIC, GLASS REINFORCED,  
COLOR-BLACK,  
UL94V-0 FLAMMABILITY RATED.

POWER CONTACTS: PHOSPHOR BRONZE ALLOY  
COPPER ALLOY

CROWN BANDS: BERYLLIUM COPPER ALLOY

3. FINISHES:

CONTACTS: GOLD PLATE PER MIL-G-45204, TYPE II,  
CLASS 0, .000030" MIN. THK,  
OVER NICKEL PER QQ-N-290, CLASS 2,  
.000040" MIN. THICK.

TERMINALS: TIN PLATE PER ASTM B-545  
OVER NICKEL PER QQ-N-290

6. CONNECTOR INFORMATION

CONNECTOR	TYCO PART NUMBER	CATALOG MODULE #	QTY	SIZE NO.	CONTACT QTY	MATING PIN	MAX CURRENT (PER CONTACT)	CONTACT SPACING	VOLTAGE RATING*
PIN	6646933-1	FP1105	2	8	2	1.25 X 7.00 [.049 X .276]	35 AMPERES	7.50 [.2953]	250 VOLTS
		FP1106	1	8	1	1.25 X 7.00 [.049 X .276]	35 AMPERES	7.50 [.2953]	250 VOLTS
		FP1506	2	RIGHT ANGLE GUIDE SOCKET					
		FP1500	1	LEFT MOUNTING FLANGE					
		FP1501	1	RIGHT MOUNTING FLANGE					

\*IAW IEC-950

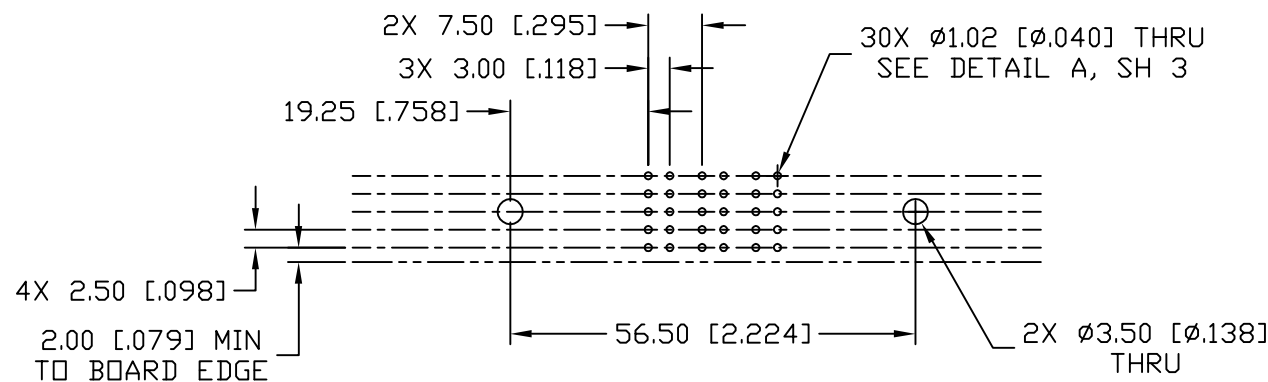
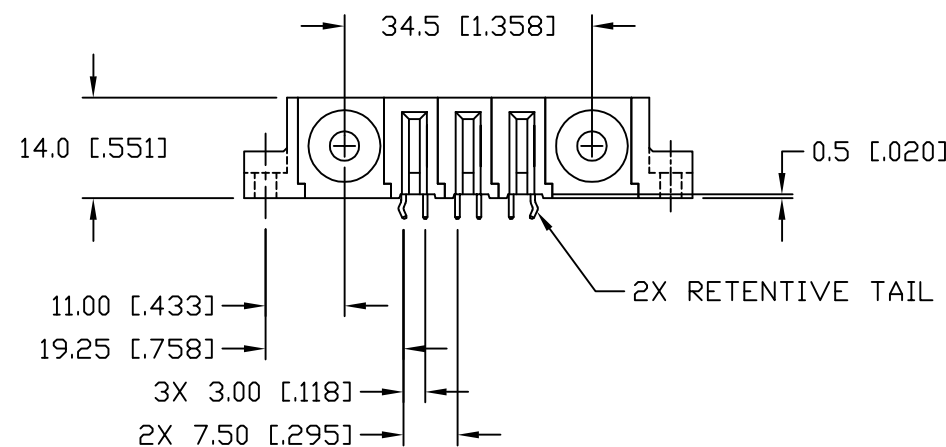
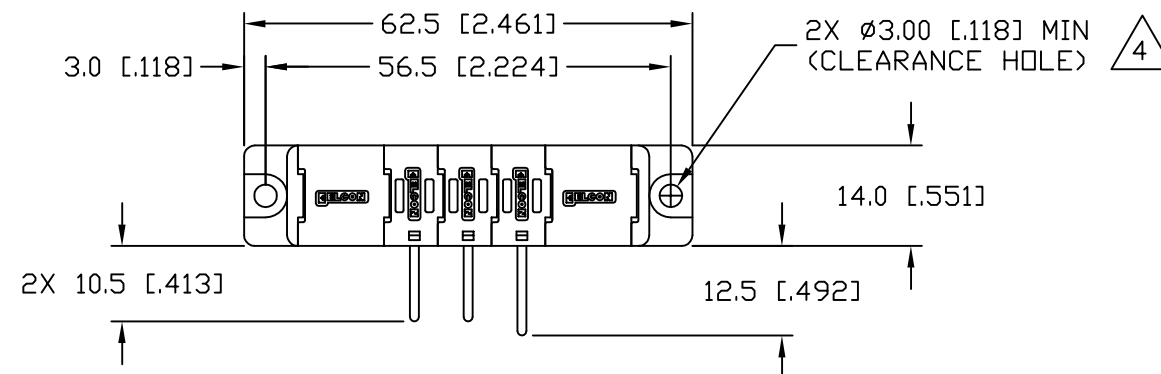
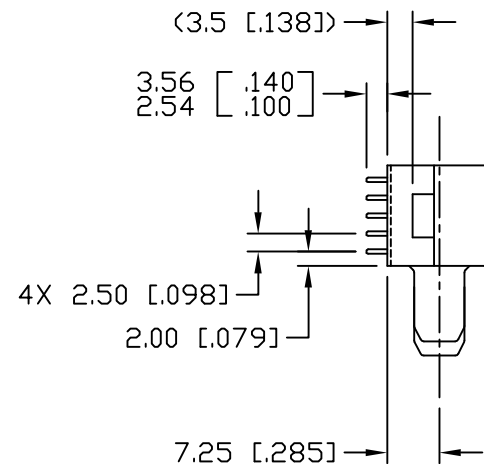
4 MOUNTING FLANGES ACCEPT M3 OR #4-40 SCREWS (USER SUPPLIED).

5. ITEMS PROVIDED TO THIS SPECIFICATION TO BE PERMANENTLY IDENTIFIED PER THE FOLLOWING IDENTIFIER:

TYCO PART NUMBER      YEAR      WEEK  
XXXXXXX-X      XXXX      0525

<div>MM INCH</div> <div>OR MM [INCH]</div> <div></div> <div>THIRD ANGLE PROJECTION</div> <div>UNLESS OTHERWISE SPECIFIED DIMENSIONS ARE IN METRIC [INCHES]</div> <div>TOLERANCES</div> <div>ANGLES ± .5°</div> <div>DECIMALS</div> <div>.XX ± .25 [.010]</div> <div>.X ± .5 [.020]</div>	DRAWN HA NGUYEN	DATE 12/17/05	<div> Tyco Electronics Corporation Menlo Park, Ca 94025</div> <div></div> <div>TITLE</div> <div>CONNECTOR, PIN, RIGHT ANGLE SOLDER, SHORT TAIL, FLATPAQ PN 6646933-1</div>		
	CHECKED				
	APPROVED				
	APPROVED		SIZE B	DWG NUMBER C = 6646933	REV. A
	D. CHAU	12/17/05			
M. ALIM	12/17/05	ACAD FILE NUMBER C6646933A.DWG			
DWG SCALE 1=1			SH 1 OF 3		

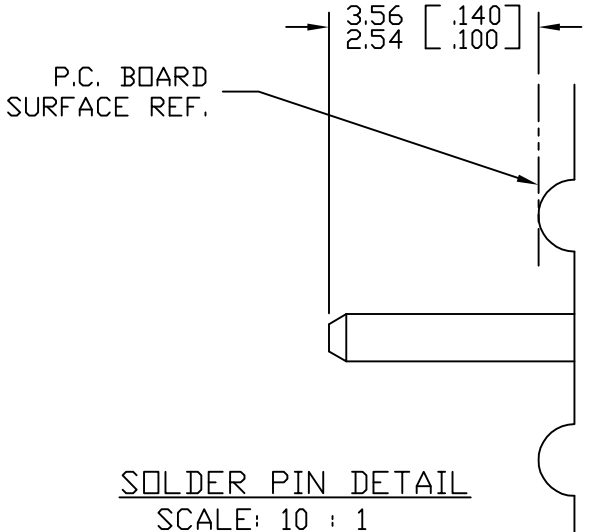
This drawing involves proprietary design rights of Tyco Electronics Corporation, and all design, manufacture, reproduction, use and sale rights regarding the same are expressly reserved. It is submitted for a specific purpose and the recipient by accepting this drawing, assumes custody and control and agrees to take reasonable precautions; (a) that this drawing will not be copied and reproduced, in whole or in part, or its contents revealed in any manner, or to any person except to meet the purpose for which it was delivered and (b) that any special features peculiar to this design will not be incorporated in other projects without the expressed written permission of Tyco Electronics Corporation.



PRINTED CIRCUIT BOARD LAYOUT

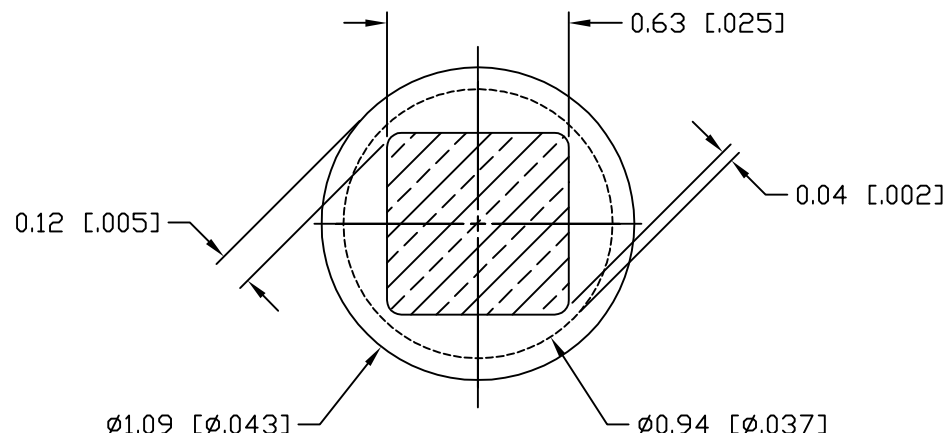
<div>← MM INCH → OR MM [INCH]</div> <div>THIRD ANGLE PROJECTION</div> <div>UNLESS OTHERWISE SPECIFIED DIMENSIONS ARE IN METRIC [INCHES]</div> <div>TOLERANCES</div> <div>ANGLES ± .5°</div> <div>DECIMALS</div> <div>.XX ± .25 [.010]</div> <div>.X ± .5 [.020]</div>	DRAWN HA NGUYEN	DATE 12/17/05	<div><b>tyco</b> Tyco Electronics Corporation <b>Electronics</b> Menlo Park, Ca 94025</div> <div><b>ELCON</b></div>		
	CHECKED		TITLE CONNECTOR, PIN, RIGHT ANGLE SOLDER, SHORT TAIL, FLATPAQ PN 6646933-1		
	APPROVED		SIZE B	DWG NUMBER C = 6646933	REV. A
	APPROVED D. CHAU	12/17/05	ACAD FILE NUMBER C6646933A.DWG		
DCA APPROVED M. ALIM		12/17/05	DWG SCALE 1=1		SH 2 OF 3

This drawing involves proprietary design rights of Tyco Electronics Corporation, and all design, manufacture, reproduction, use and sale rights regarding the same are expressly reserved. It is submitted for a specific purpose and the recipient by accepting this drawing, assumes custody and control and agrees to take reasonable precautions; (a) that this drawing will not be copied and reproduced, in whole or in part, or its contents revealed in any manner, or to any person except to meet the purpose for which it was delivered and (b) that any special features peculiar to this design will not be incorporated in other projects without the expressed written permission of Tyco Electronics Corporation.

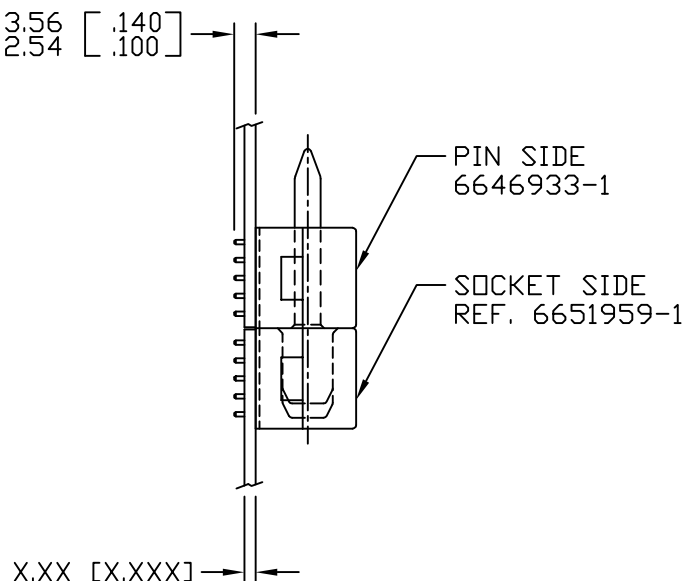


SOLDER PIN DETAIL  
SCALE: 10 : 1

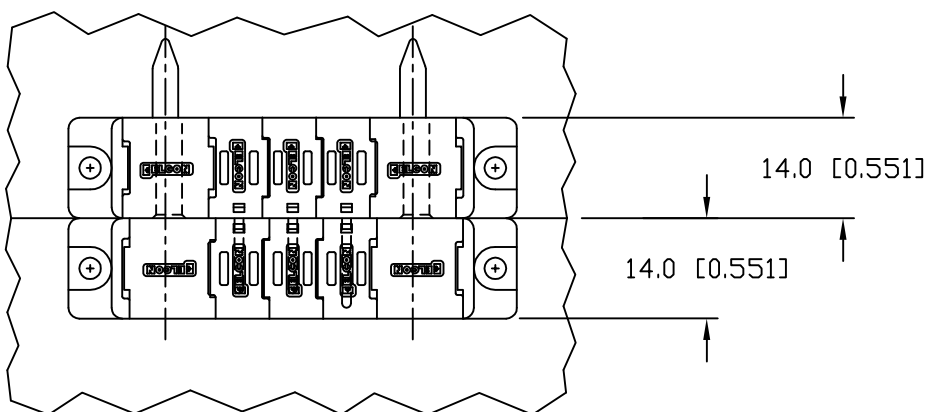
REVISIONS			
EC	REV	DESCRIPTION	DATE
		SEE SHEET 1	



SOLDER TERMINATION AREA  
SCALE: 40 : 1  
RECOMMENDED PRINTED CIRCUIT HOLE  
FINISHED HOLE: Ø1.02 [.040] ± 0.08 [.003]  
DRILLED HOLE: Ø1.15 [.0453] ± 0.013 [.0005]  
COPPER PLATE: 0.025 [.0010] MINIMUM (PER SURFACE)  
TIN PLATE: 0.008 [.0003] MINIMUM (PER SURFACE)



MATED CONDITION



<div>MM INCH</div> <div>OR MM [INCH]</div> <div>THIRD ANGLE PROJECTION</div> <div>UNLESS OTHERWISE SPECIFIED DIMENSIONS ARE IN METRIC [INCHES]</div> <div>TOLERANCES</div> <div>ANGLES ± .5°</div> <div>DECIMALS</div> <div>.XX ± .25 [.010]</div> <div>.X ± .5 [.020]</div>	DRAWN HA NGUYEN	DATE 12/17/05	<div><b>tyco</b> Tyco Electronics Corporation <b>Electronics</b> Menlo Park, Ca 94025</div> <div><b>ELCON</b></div> <div>TITLE USER INFORMATION SOLDER TAIL TERMINATION AND MATED CONDITION</div>				
	CHECKED				SIZE B	DWG NUMBER C = 6646933	REV. A
	APPROVED						
	APPROVED D. CHAU	12/17/05					
	DCA APPROVED M. ALIM	12/17/05					
ACAD FILE NUMBER C6646933A.DWG		DWG SCALE 1 = 1		SH 3 OF 3			