

SUMMARY

Wires

Low voltage	1
-------------	---

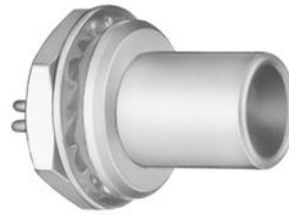


Image is for illustrative purpose only

Series	1S
Termination type	Male solder
IP rating	50
AWG wire size	0.00 - 12.00
Cable Ø	0.00 - 0.00 mm
Status	active
Matching parts	PCA.1S.130.CTLC32

Download

[Request a quote](#)

[Catalog](#)

TECHNICAL DETAILS

Mechanics

Shell Style/Model	FAA*: Fixed plug, non-latching, nut fixing
Keying	Circular, male
Housing Material	Brass (chrome plated [SAE AMS 2460]) shell and collet nut, nickel plated [SAE AMS QQ N 290] brass latch sleeve and mid pieces
Weight	9.78 g

Performance

Configuration	1S.130 : 1 Low Voltage
Insulator	T: PTFE
Rated Current	25 Amps

Specifications

Contact Type:	Solder
Vtest (contact-shell):	1500 V (AC), 2150 V (DC)
Vtest (contact-contact):	1500 V (AC), 2150 V (DC)

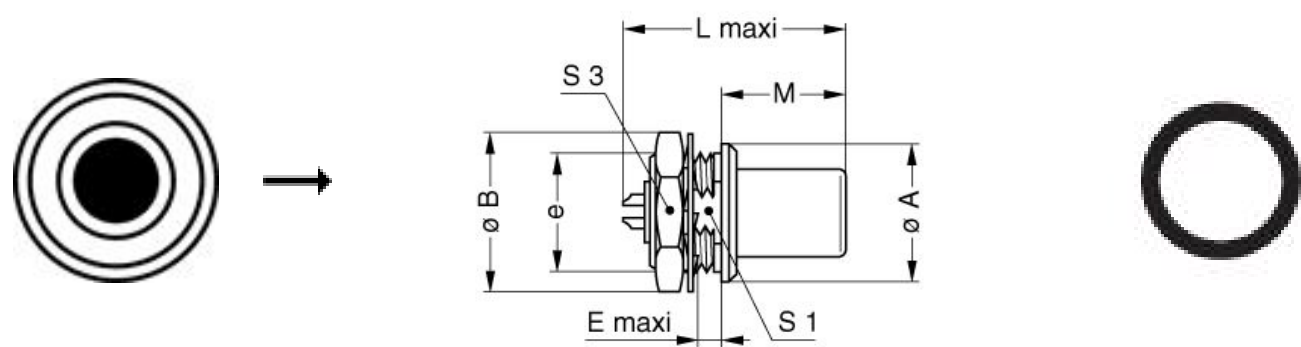
Others

Endurance (Shell):	5000 mating cycles
Temp (min / max):	-55°C / +250°C

LEMO products and services are provided "as is". LEMO makes no warranties or representations with regard to LEMO product & services or use of them, express, implied or statutory, including for accuracy, completeness, or security. The user is fully responsible for his products and applications using LEMO components.

Humidity (max): <=95% [at 60 deg C / 140 F]
Vibration: 15 g [10 Hz - 2000 Hz]
Shock Resistance: 100 g [6 ms]
Climatical Category: 50/175/21
Shielding (min): 75 dB (10 MHz)
Shielding (min): 40 dB (1 GHz)
Salt Spray Corrosion: >144 hr

DRAWINGS



Dimensions

	A	B	E	L	M	S1	S3	e
mm.	14	16	2.5	22.5	12.5	10.5	14	M12x1.0
in.	0,55	0,63	0,10	0,89	0,49	0,41	0,55	

RECOMMENDED BY LEMO

Tools

LEMO products and services are provided “as is”. LEMO makes no warranties or representations with regard to LEMO product & services or use of them, express, implied or statutory, including for accuracy, completeness, or security. The user is fully responsible for his products and applications using LEMO components.