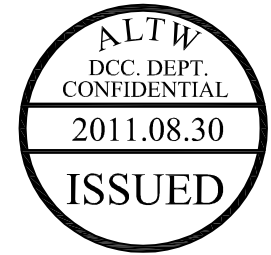
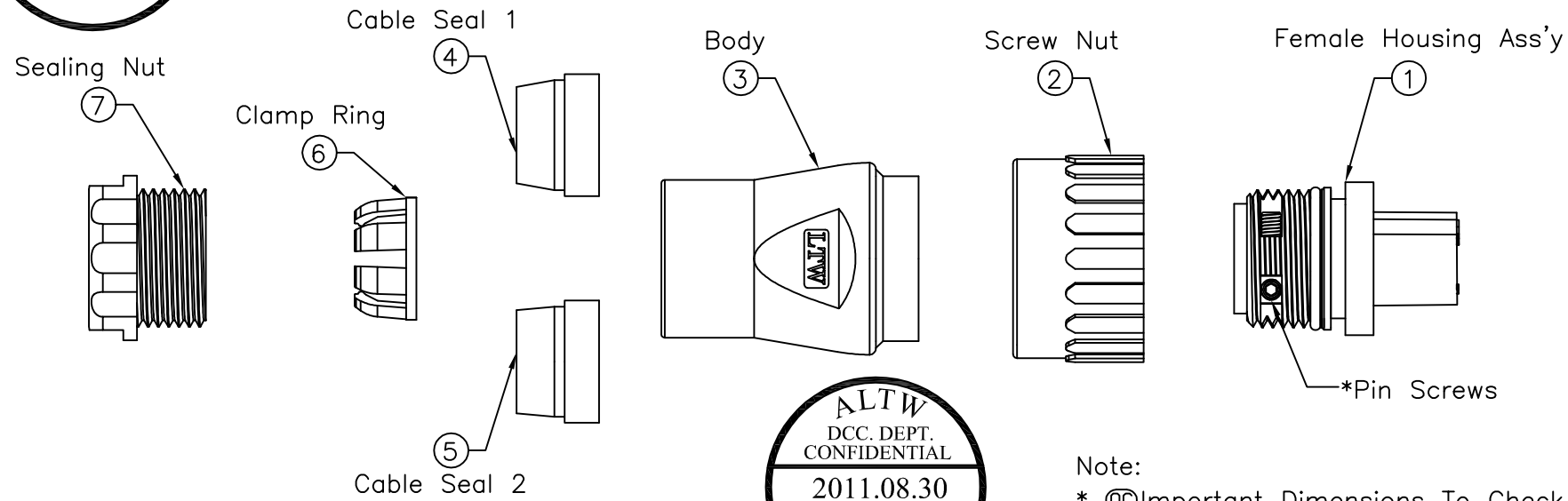
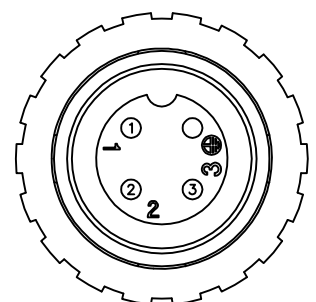


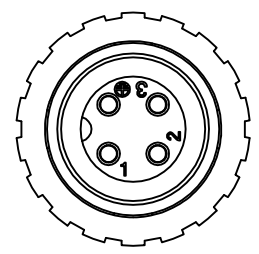
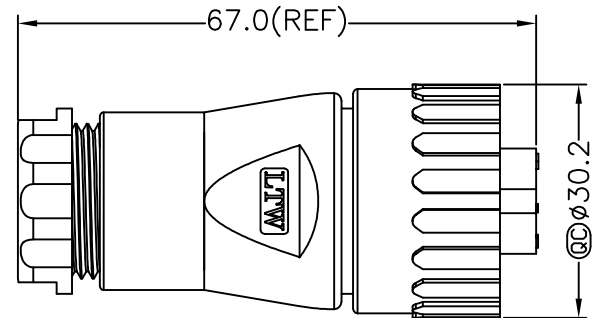
REV.	ECN NO.	DATE	SIGN	DESCRIPTION
A	Initial Release	2010/03/24	Dominic	
B	LEN1180131	2011/08/27	baowei	Add Wire Size



- Note:
- * @C Important Dimensions To Check.
 - * Waterproof Rate: IP67
 - * Female Housing: Nylon+GF, Black
 - * Female Pin: Copper Alloy, Silver Plated
 - * Pin Screws: 1.5mm(HEX), Stainless Steel
For wire assembly, tightened by tool.
 - * O-ring: Silicone, Gray
 - * Seal 1: For Cable OD: $\phi 6.0\text{mm} \sim 9.0\text{mm}$
 - * Seal 2: For Cable OD: $\phi 9.0\text{mm} \sim 12.5\text{mm}$
 - * Flame Class: UL94V-0
 - ⑧ * One Set Unassembled in one PE Bag
 - * 1.5mm Hex Tool for Screws sold separately
 - △ * Wire Size Range: 14AWG~18AWG



Pin Assignments
Front View



Conn.

A	UNIT:mm				TITLE Assy Female Power Conn. 16Amp Screw in Type Pin (Silver Plated)			Amphenol LTW 安費諾亮泰企業股份有限公司		ITEM NO PWG-04BFFB-SL7002		DRAWN BY baowei		DATE 2011/08/27				
	TOLERANCE ±0.5 mm			SCALE Free						SHEET 1 OF 1		DWG NO PWG-04BFFB-SL7002		CHECKED BY Micky		DATE 2011/08/27		
				REV. B		SIZE A4				QC :Inspection Item		CUSTOMER ALTW		APPROVED BY Victor		DATE 2011/08/27		
	1		2		3		4			5		6		7		8 FMW10702-01-01A2		

THIS DOCUMENT IS SUBJECT TO CHANGE WITHOUT NOTICE. IT IS CONFIDENTIAL AND A PROPERTY OF AMPHENOL LTW. DISCLOSURE TO THIRD PARTY HAS TO BE AUTHORIZED BY AMPHENOL LTW.