

NOTE:

MATERIAL

HOUSING: PA66 UL94V-0, BLACK

CONTACT: BRASS

NUT: BRASS

SHELL: BRASS

ORING: EPDM

FINISH

CONTACT: 10u" GOLD PLATED

NUT: OVER NICKEL

SHELL: NICKEL PLATED

ELECTRICAL

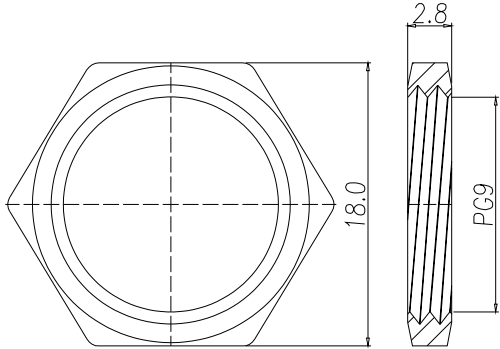
RATED CURRENT: 16A

RATED VOLTAGE: 63V

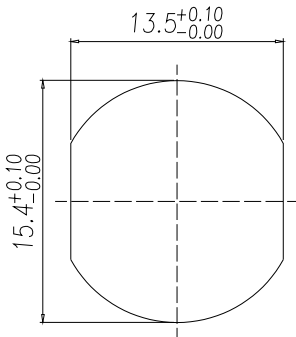
WATER PROOF: IP67

ENVIRONMENT

OPERATION TEMPERATURE: -40°C TO +85°C



NUT



RECOMMENDPANEL CUT-OUT

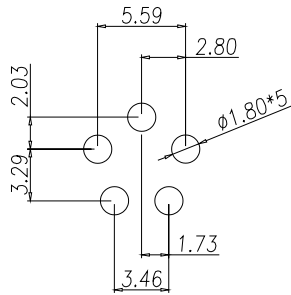
860-LP5-213R00Y

1 = GOLD FLASH

4 = 10u" GOLD

3 = BRASS/NICKEL (B/N) SHELL & NUT

S = STAINLESS STEEL (SS) SHELL & NUT



P.C.B LAYOUT

RoHS COMPLIANT



THESE DRAWINGS AND SPECIFICATIONS ARE THE PROPERTY OF NorComp AND SHALL NOT BE REPRODUCED, COPIED OR USED AS THE BASIS FOR THE MANUFACTURE OR SALE OF APPARATUS WITHOUT WRITTEN PERMISSION.

DRAWN:

J. KADEL

DATE:

10/26/2020

UNITS = mm

DO NOT SCALE FROM DRAWING

NorComp

SCALE: NTS

SHEET 1 OF 1

REV 3

DWG NO.

860-LP5-213R004