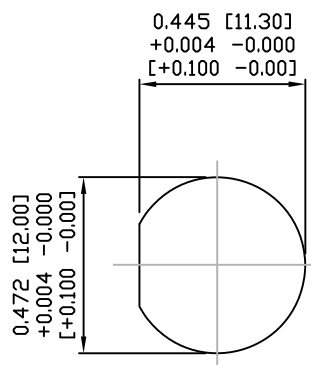
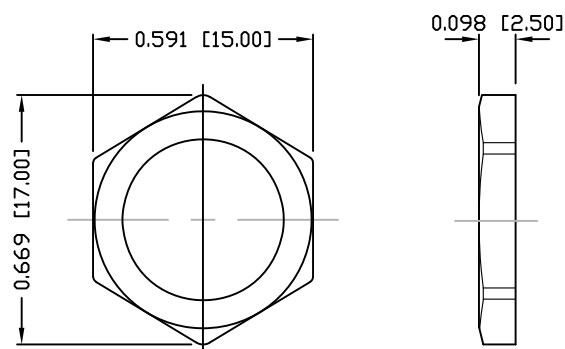


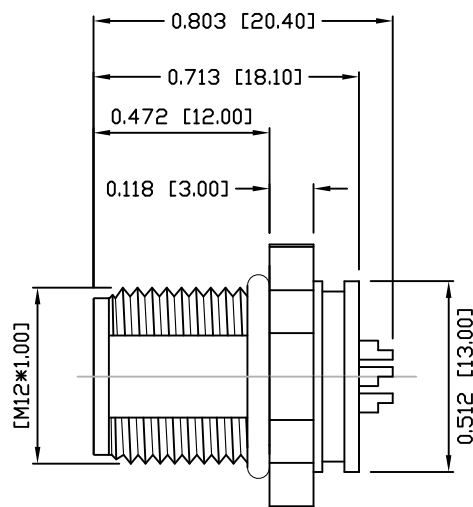
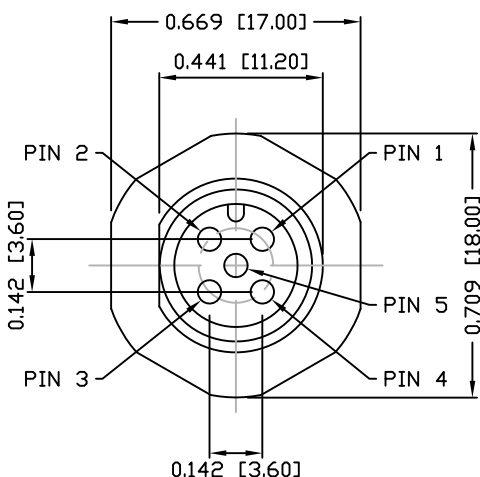
DESCRIPTION: M12 MALE - PANEL MOUNT (REAR) - SOLDER CUP - 5 POS.



PANEL CUTOUT

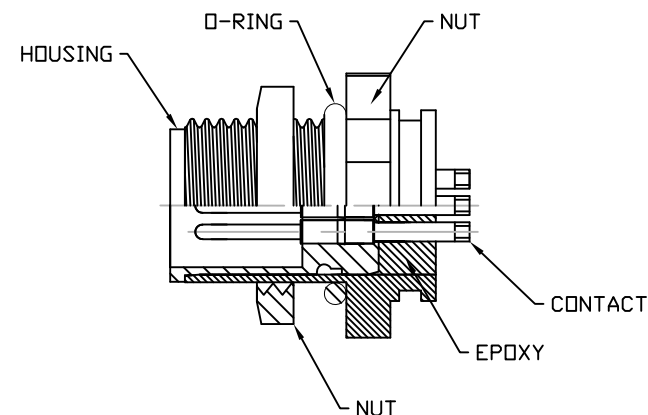


NUT



3 = BRASS/NICKEL SHELL & NUT
S = STAINLESS STEEL SHELL & NUT

1 = GOLD FLASH
4 = 10u" GOLD



NOTE:

MATERIAL

HOUSING: PBT UL94V-0, BLACK
CONTACT: BRASS
NUT: BRASS
SHELL: BRASS
O-RING: EPDM

FINISH

CONTACT: GOLD PLATED
OVER 50u" NICKEL
NICKEL PLATED
NICKEL PLATED

ELECTRICAL

RATED CURRENT: 4A
RATED VOLTAGE: 60V
INSULATION RESISTANCE: 100 MOhms MIN.
CONTACT RESISTANCE: 10 mOhms MAX.
WATER PROOF: IP67

ENVIRONMENT

OPERATION TEMPERATURE: -40°C TO +85°C
MAX WIRE AWG: 22

859-005-103R00Y

RoHS COMPLIANT

UNITS = INCHES [MM]

DO NOT SCALE FROM DRAWING



THESE DRAWINGS AND SPECIFICATIONS ARE THE PROPERTY OF NorComp AND SHALL NOT BE REPRODUCED, COPIED OR USED AS THE BASIS FOR THE MANUFACTURE OR SALE OF APPARATUS WITHOUT WRITTEN PERMISSION.

DRAWN:

M. SIGMON

DATE:

03-07-16

NorComp

SCALE:

NTS

SHEET

OF

1

1

REV

3

DWG NO.

859-005-103R00Y