

SUMMARY

Wires

| | |
|---------|---|
| Low | 0 |
| High | 1 |
| Coax | 0 |
| Triax | 0 |
| Quad | 0 |
| Fiber | 0 |
| Fluidic | 0 |

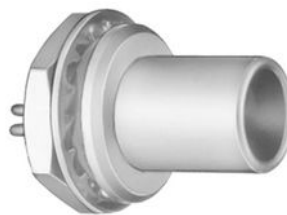


Image is for illustrative purpose only

Download

[Request a quote](#)

[Catalog](#)

| | |
|------------------|--------------------------|
| Series | 1S |
| Termination type | Male solder High-Voltage |
| IP rating | 50 |
| Cable Ø | 0.00 - 0.00 mm |
| Matching parts | PCA.1S.405.CLLC32 |
| Status | active |
| Alternative part | |

TECHNICAL DETAILS

Mechanics

| | |
|-------------------|---|
| Shell Style/Model | FAA*: Fixed plug, non-latching, nut fixing |
| Keying | Circular (can rotate), plug has male contact(s) |
| Housing Material | Brass (chrome plated) shell and collet nut, nickel plated brass latch sleeve and mid pieces |
| Cable Fixing | Ø 0 - 0 mm |
| Variant | |
| Weight | 10.16 g |

Performance

| | |
|---------------|-------------------------|
| Configuration | 1S.405 : 1 High Voltage |
| Insulator | T: PTFE |
| Rated Current | 8 Amps |

Specifications

| | |
|----------------------|------|
| Contact Type: Solder | |
| Test voltage (kV DC) | 10.5 |
| Test voltage (kV AC) | 7.5 |

LEMO products and services are provided "as is". LEMO makes no warranties or representations with regard to LEMO product & services or use of them, express, implied or statutory, including for accuracy, completeness, or security. The user is fully responsible for his products and applications using LEMO components.

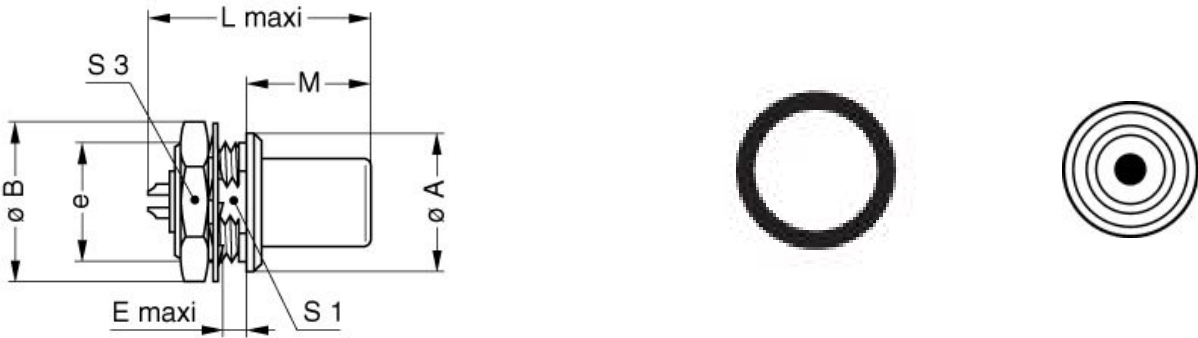
Creepage dist.(mm): 10.5

Others

- Endurance (Shell): 5000 mating cycles
- Temp (min / max): -55° C / +250° C
- Humidity (max): <=95% [at 60 deg C / 140 F]
- Vibration: 15 g [10 Hz - 2000 Hz]
- Shock Resistance: 100 g [6 ms]
- Salt Spray Corrosion: >144 hr
- Climatical Category: 50/175/21
- Shielding (min): 75 dB (10 MHz)
- Shielding (min): 40 dB (1 GHz)
- IP Rating: 50

DRAWINGS

Draws



Dimensions

| | A | B | E | L | M | S1 | S3 | e |
|-----|------|------|------|------|------|------|------|---------|
| mm. | 14 | 16 | 2.5 | 22.5 | 12.5 | 10.5 | 14 | M12x1.0 |
| in. | 0,55 | 0,63 | 0,10 | 0,89 | 0,49 | 0,41 | 0,55 | |

RECOMMENDED BY LEMO

Tools

LEMO products and services are provided “as is”. LEMO makes no warranties or representations with regard to LEMO product & services or use of them, express, implied or statutory, including for accuracy, completeness, or security. The user is fully responsible for his products and applications using LEMO components.

None

Cables

LEMO products and services are provided "as is". LEMO makes no warranties or representations with regard to LEMO product & services or use of them, express, implied or statutory, including for accuracy, completeness, or security. The user is fully responsible for his products and applications using LEMO components.