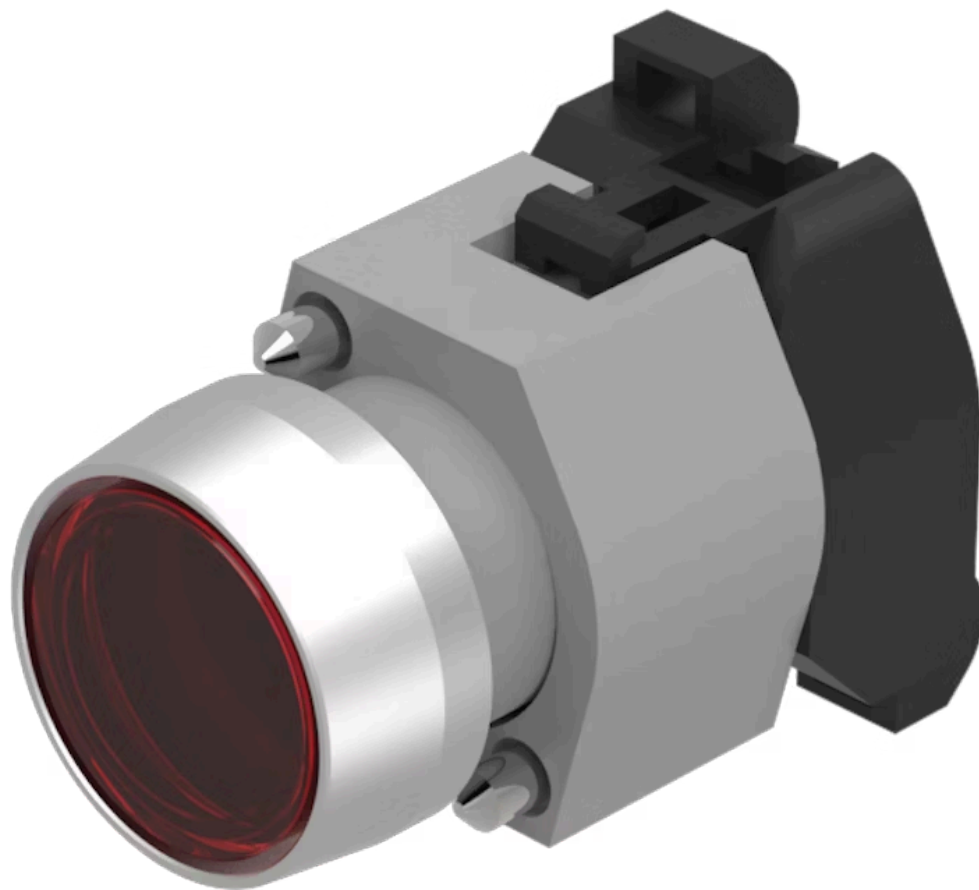


# Actuator

704.032.2



<https://eao.com/p/704.032.2>

Your product:

---



## 704.032.2 Actuator

### FRONT

Front bezel colour:	Nature
Front dimension:	Ø 29 mm
Front form:	round
Front bezel material:	Aluminium

### MOUNTING

Design:	raised
---------	--------

### OPERATING-/INDICATION PART

Lens colour:	Red
Lens shape:	flush
Lens material:	Plastic
Lens illumination:	illuminative
Lens optics:	transparent

### ELECTRICAL CHARACTERISTICS

Standards:	The switches comply with the "Standards for low-voltage switching devices" DIN EN 60947-1
------------	---

### MECHANICAL CHARACTERISTIC

Operating Travel:	ca. 5.8 mm ± 0.2 mm
Terminal:	Screw terminal
Mechanical lifetime:	≤3 Mio. cycles of operation

**Operating force:** 8 N

**Switching action:** Momentary

**Weight:** 0.056 kg

## AMBIENT CONDITION

**IP Protection:** IP65 front side

**Operating temperature:** – 40 °C ... + 55 °C

**Storage temperature:** – 40 °C ... + 85 °C

## OTHER

**max. number of switching elements:** 3

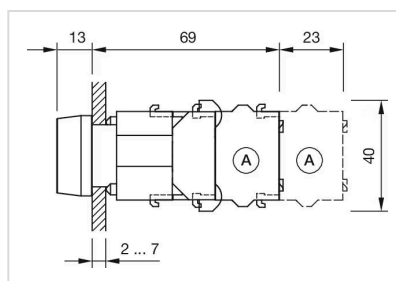
**Hints:** Frontring with protective cover to be mounted with a torque of 0.4 Nm onto actuator, Max. 3 switching elements can be clipped on

**Housing material:** Plastic

**Short Description:** Actuator, Ø 29 mm, flush, illuminative, Red, Plastic, transparent, round, Nature, Aluminium, anodised, Momentary, Screw terminal

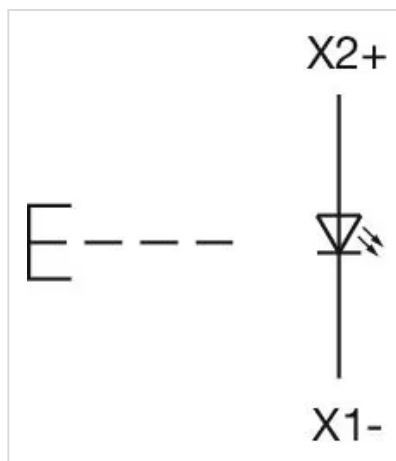
**Housing colour:** Grey

**Dimension drawings:**

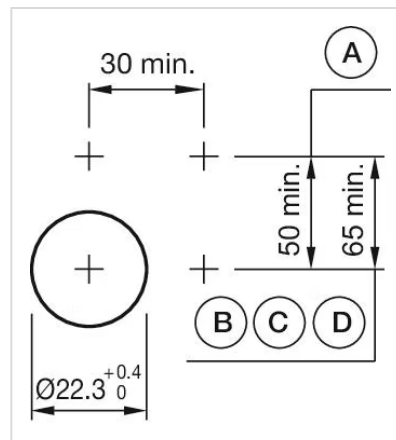


A = Screw terminal

**Wiring diagrams:**



**Mounting cut-outs:**



A = Screw terminal  
B = Push-in terminal (PIT)  
C = Plug-in terminal 6.3 mm x 0.8 mm  
D = Double plug-in terminal 6.3 mm x 0.8 mm