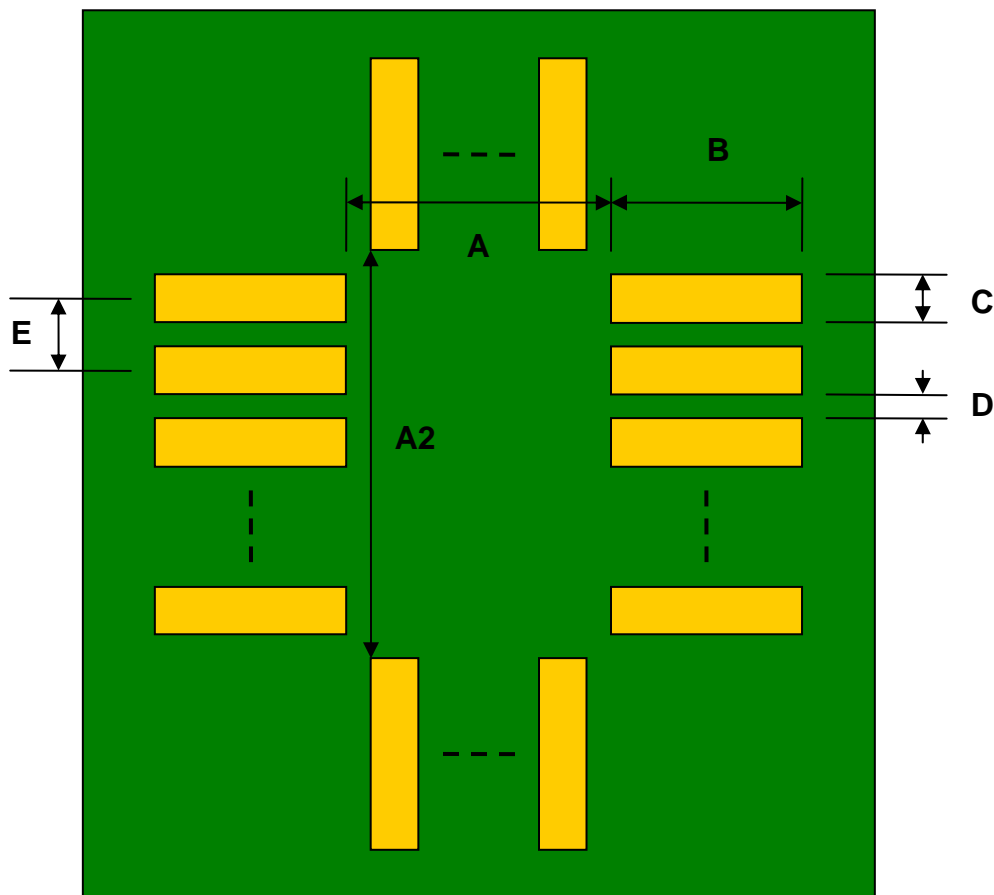


LGA-28 to DIP-28 SMT Adapter (0.55 mm pitch, 5.0 x 5.0 mm body)

REF.	DIMENSIONS					
	mm			inches		
	MIN.	TYP.	MAX.	MIN.	TYP.	MAX.
A		4.00				
A2		4.00				
B		0.70				
C		0.30				
D		0.25				
E		0.55				
F					0.600	
G					0.100	
H					0.025	

Top View (SMT Footprint)



(Representative drawing only - not to scale)

Bottom View (DIP Pins)



(Representative drawing only - not to scale)

Side View (DIP Pins)



(Representative drawing only - not to scale)