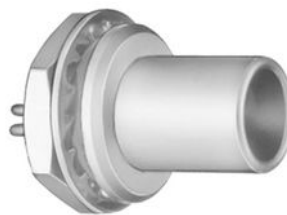


## SUMMARY

### # Wires

Low voltage	1
-------------	---



*Image is for illustrative purpose only*

Series	2S
Termination type	Male solder
IP rating	50
AWG wire size	0.00 - 10.00
Cable Ø	0.00 - 0.00 mm
Status	active
Matching parts	<a href="#">PCA.2S.140.CTLC62</a>

### Download

[Request a quote](#)

[Catalog](#)

## TECHNICAL DETAILS

### Mechanics

Shell Style/Model	FAA*: Fixed plug, non-latching, nut fixing
Keying	Circular, male
Housing Material	Brass (chrome plated [SAE AMS 2460]) shell and collet nut, nickel plated [SAE AMS QQ N 290] brass latch sleeve and mid pieces
Weight	16.37 g

### Performance

Configuration	2S.140 : 1 Low Voltage
Insulator	T: PTFE
Rated Current	40 Amps

### Specifications

Contact Type:	Solder
Vtest (contact-shell):	1800 V (AC), 2550 V (DC)
Vtest (contact-contact):	1800 V (AC), 2550 V (DC)

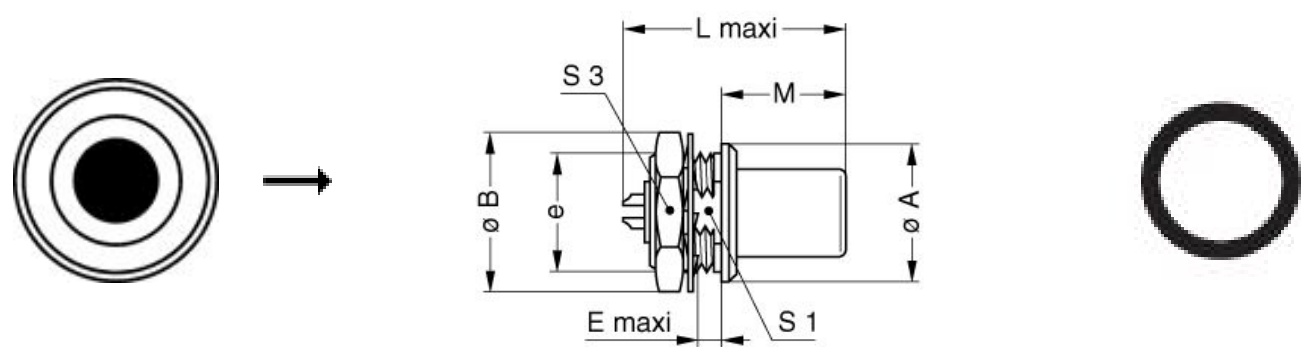
### Others

Endurance (Shell):	5000 mating cycles
Temp (min / max):	-55°C / +250°C

LEMO products and services are provided "as is". LEMO makes no warranties or representations with regard to LEMO product & services or use of them, express, implied or statutory, including for accuracy, completeness, or security. The user is fully responsible for his products and applications using LEMO components.

Humidity (max): <=95% [at 60 deg C /140 F]  
Vibration: 15 g [10 Hz - 2000 Hz]  
Shock Resistance: 100 g [ 6 ms]  
Climatical Category: 50/175/21  
Shielding (min): 75 dB (10 MHz)  
Shielding (min): 40 dB (1 GHz)  
Salt Spray Corrosion: >144 hr

# DRAWINGS



## Dimensions

	A	A	B	E	L	M	S1	S3	e
mm.	18	18	19.5	4	25	13.8	13.5	17	M15x1.0
in.	0,71	0,71	0,77	0,16	0,98	0,54	0,53	0,67	

# RECOMMENDED BY LEMO

## Tools

LEMO products and services are provided “as is”. LEMO makes no warranties or representations with regard to LEMO product & services or use of them, express, implied or statutory, including for accuracy, completeness, or security. The user is fully responsible for his products and applications using LEMO components.