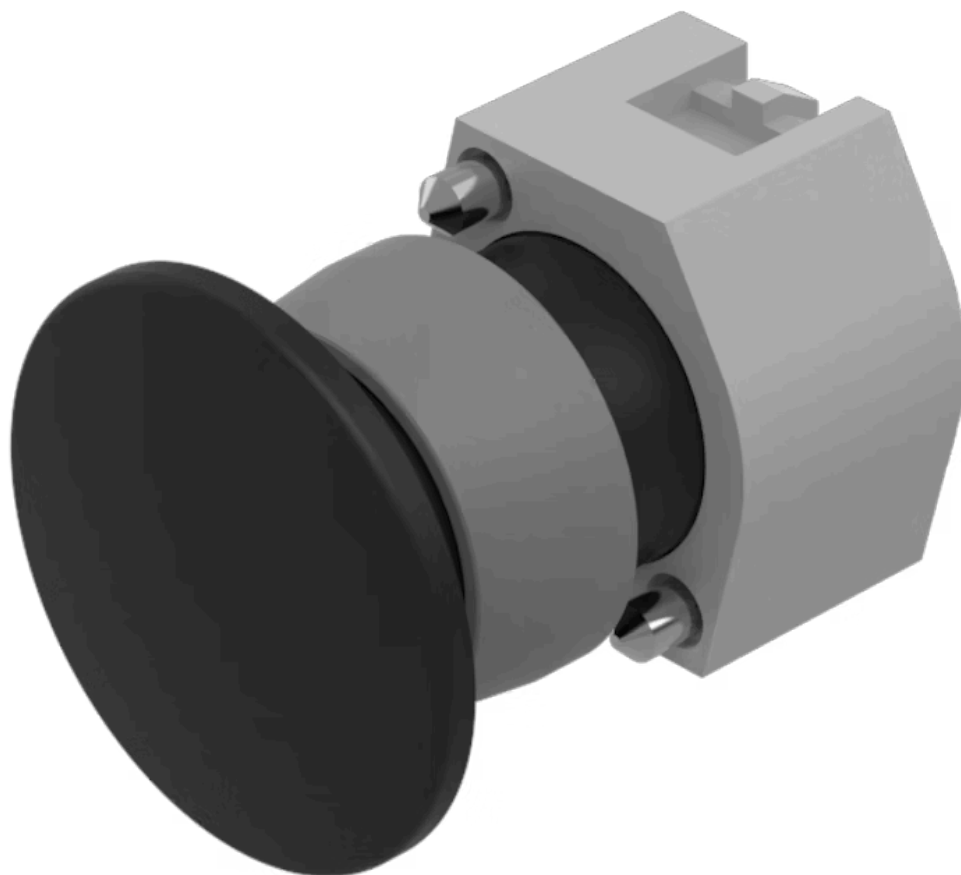


# Actuator

704.073.0



<https://eao.com/p/704.073.0>

Your product:

---



## 704.073.0 Actuator

### FRONT

Front bezel material:	Aluminium
Front bezel colour:	Nature
Front dimension:	Ø 40 mm
Front bezel shape:	with protective hood

### MOUNTING

Design:	raised
---------	--------

### OPERATING-/INDICATION PART

Lens optics:	opaque
Lens colour:	Black
Lens shape:	mushroom-head
Lens material:	Plastic
Lens illumination:	non illuminative

### MECHANICAL CHARACTERISTIC

Switching action:	Maintained
Mechanical lifetime:	≤3 Mio. cycles of operation
Weight:	0.044 kg

### OTHER

max. number of switching elements:	3
------------------------------------	---

**Housing colour:**

Grey

**Hints:**

Max. 3 switching elements can be clipped on

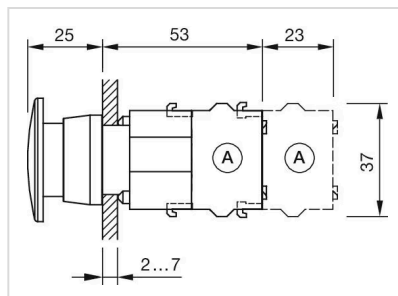
**Short Description:**

Actuator, Ø 40 mm, mushroom-head, non illuminative, Black, Plastic, opaque, with protective hood, Nature, Aluminium, anodised, Maintained

**Housing material:**

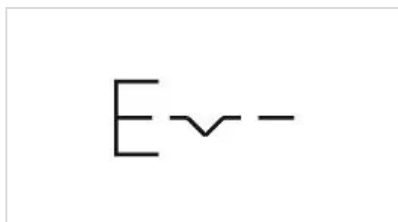
Plastic

**Dimension drawings:**

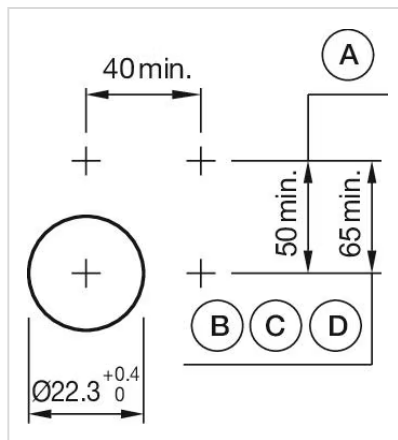


A = Screw terminal

**Wiring diagrams:**



**Mounting cut-outs:**



A = Screw terminal  
B = Push-in terminal (PIT)  
C = Plug-in terminal 6.3 mm x 0.8 mm  
D = Double plug-in terminal 6.3 mm x 0.8 mm