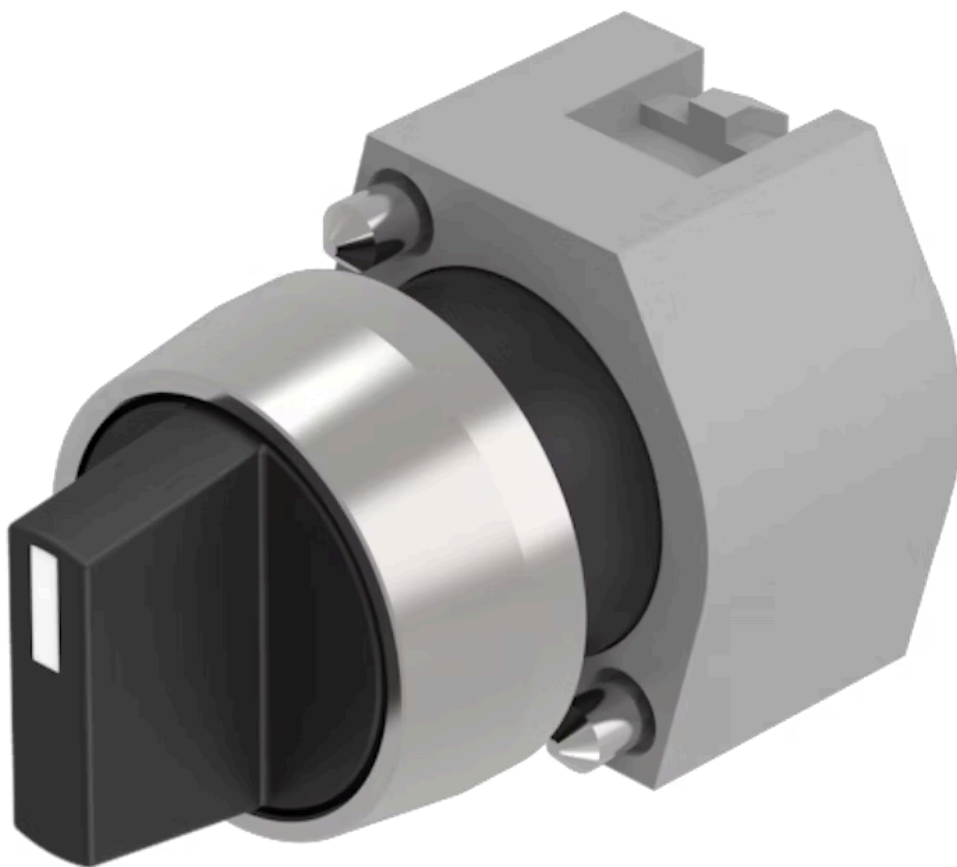


# Actuator

704.409.0



<https://eao.com/p/704.409.0>

Your product:

---



## 704.409.0 Actuator

### FRONT

Front dimension:	Ø 29 mm
Front bezel material:	Aluminium
Front bezel colour:	Nature

### MOUNTING

Design:	raised
---------	--------

### OPERATING-/INDICATION PART

Lever shape:	short
Lever material:	plastic
Lever colour:	Black

### ELECTRICAL CHARACTERISTICS

Standards:	The switches comply with the "Standards for low-voltage switching devices" DIN EN 60947-1
------------	---

### MECHANICAL CHARACTERISTIC

Weight:	0.034 kg
Switching positions:	3 positions
Switching action:	Momentary - Rest - Maintained
Mechanical lifetime:	≤2.5 Mio. cycles of operation
Switching angle:	42° left / 42° right

## AMBIENT CONDITION

**Operating temperature:** – 40 °C ... + 55 °C

**Storage temperature:** – 40 °C ... + 85 °C

**IP Protection:** IP65 front side

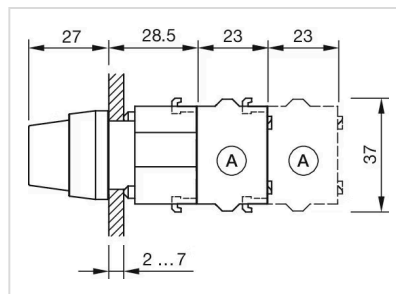
## OTHER

**max. number of switching elements:** 3

**Short Description:** Actuator, Ø 29 mm, non illuminative, Black, short, Nature, Aluminium, anodised, Momentary - Rest - Maintained

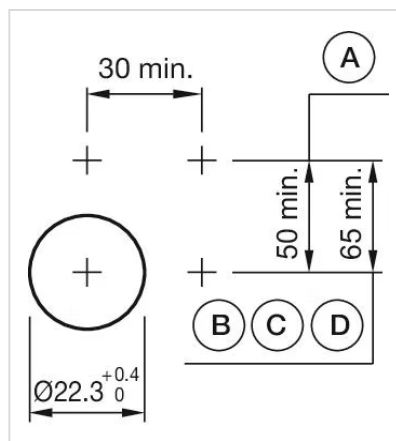
**Hints:** Max. 3 switching elements can be clipped on

**Dimension drawings:**



A = Screw terminal

**Mounting cut-outs:**



A = Screw terminal  
B = Push-in terminal (PIT)  
C = Plug-in terminal 6.3 mm x 0.8 mm  
D = Double plug-in terminal 6.3 mm x 0.8 mm

**Wiring diagrams:**



**Switching positions:**

