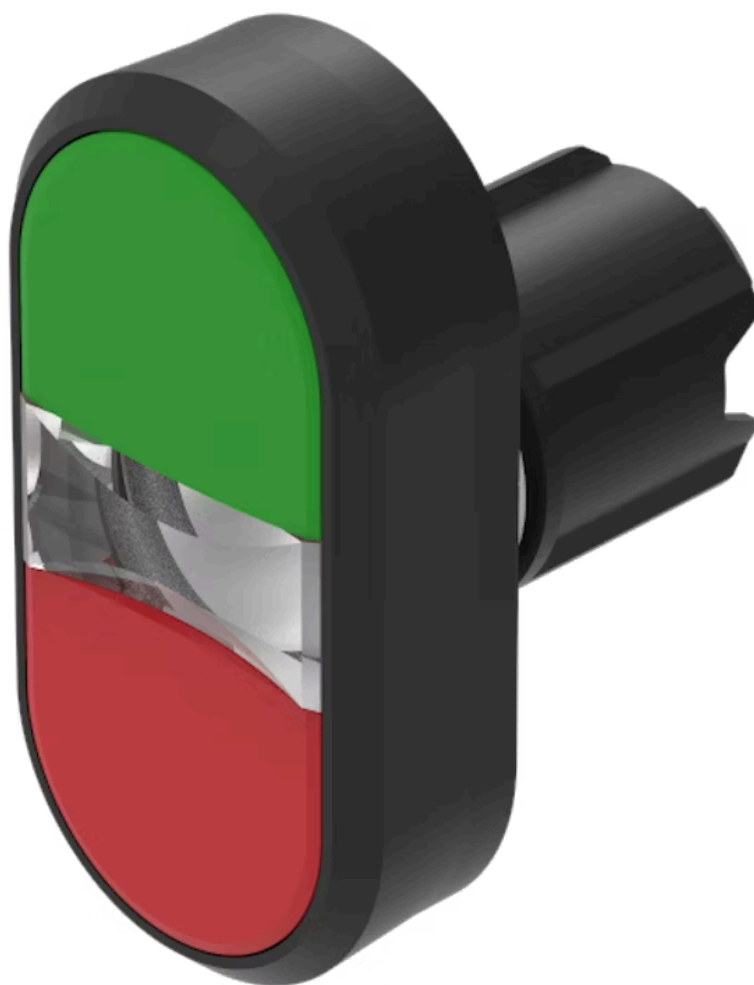


Actuator

45-
2J31.16T0.000



<https://eao.com/p/45-2J31.16T0.000>

Your product:



45-2J31.16T0.000 Actuator

FRONT

Front dimension:	58 mm x 35 mm
Front bezel colour:	Black
Front bezel material:	Plastic

MOUNTING

Design:	raised
---------	--------

OPERATING-/INDICATION PART

Lens illumination:	non illuminative
Lens colour:	Green-red
Lens shape:	flush
Lens material:	Plastic
Lens optics:	opaque

MECHANICAL CHARACTERISTIC

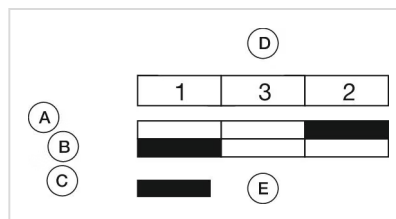
Weight:	0.026 kg
Switching action:	Momentary
Switching system:	Slow-make switching element
Mechanical lifetime:	2 Mio. cycles of operation
Operating frequency:	Max. 3 600/h

AMBIENT CONDITION

IP front protection:	IP66, IP67, IP69K
Operating temperature:	– 25 °C ... + 70 °C
Storage temperature:	– 40 °C ... + 80 °C
Shock resistance:	According to IEC 60068-2-27: Sinusoidal half-wave 50 g / 11 ms
Climate resistance:	During operation according to IEC 60721: 3K6, 3C3, 3S2, 3M6, 3B2
Vibration resistance:	According to IEC 60068-2-6: 10 ... 500 Hz: 5 g

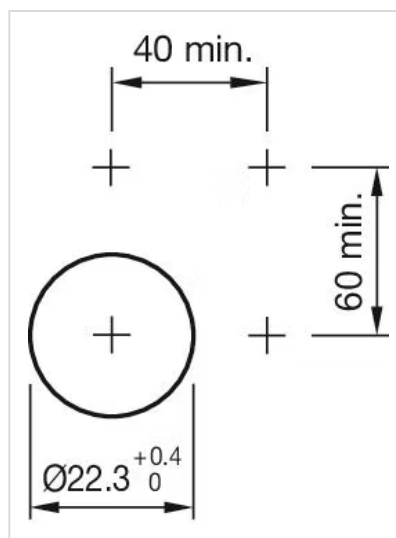
OTHER

Housing colour:	Black
Housing material:	Plastic
Short Description:	Actuator, 58 mm x 35 mm, flush, non illuminative, Green-red, Plastic, opaque, Black, Plastic, Momentary, IP66, IP67, IP69K
Component layouts:	

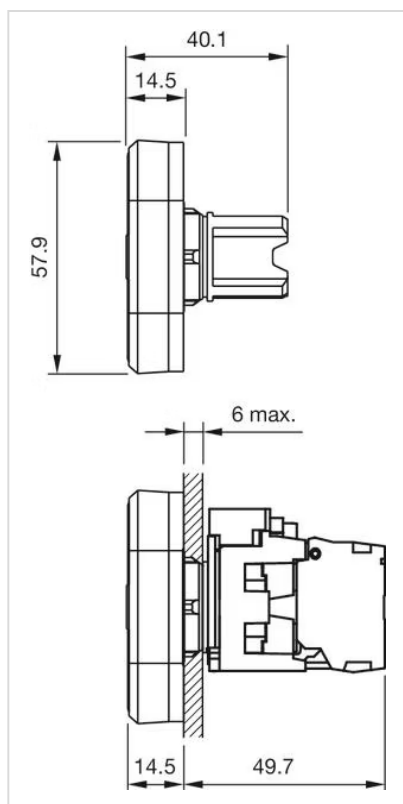


A = Switching action
B = green (white) button pressed
C = red (black) button pressed
D = Arrangement switching element corresponds to designation of front adaptor
E = Switching element actuated

Mounting cut-outs:



Dimension drawings:



Wiring diagrams:

