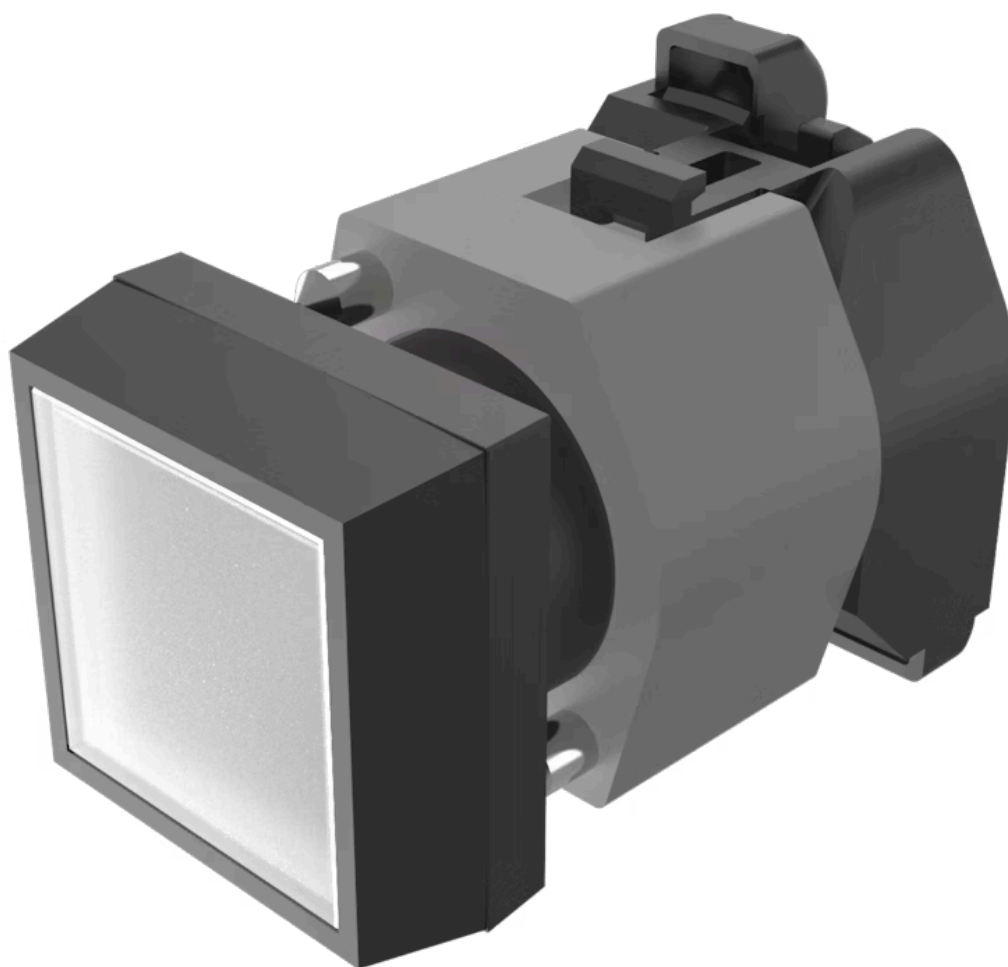


# Actuator

704.229.7



<https://eao.com/p/704.229.7>

Your product:

---



## 704.229.7 Actuator

### FRONT

Front bezel material:	Plastic
Front bezel colour:	Black
Front dimension:	30 mm x 30 mm
Front form:	square

### MOUNTING

Design:	raised
---------	--------

### OPERATING-/INDICATION PART

Lens colour:	Colourless
Lens material:	Plastic
Lens illumination:	illuminative
Lens optics:	transparent
Lens shape:	flush

### ELECTRICAL CHARACTERISTICS

Standards:	The switches comply with the "Standards for low-voltage switching devices" DIN EN 60947-1
------------	---

### MECHANICAL CHARACTERISTIC

Switching action:	Momentary
Terminal:	Screw terminal
Weight:	0.056 kg

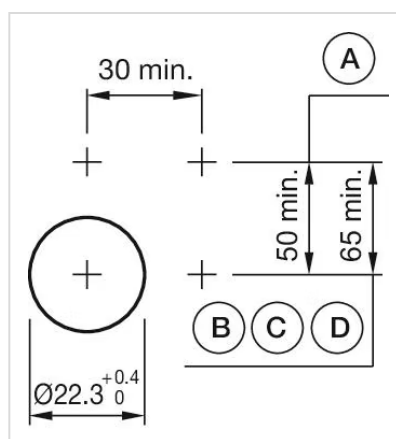
<b>Operating force:</b>	8 N
<b>Operating Travel:</b>	ca. 5.8 mm ± 0.2 mm
<b>Mechanical lifetime:</b>	≤3 Mio. cycles of operation

## AMBIENT CONDITION

<b>IP Protection:</b>	IP65 front side
<b>Storage temperature:</b>	– 40 °C ... + 85 °C
<b>Operating temperature:</b>	– 40 °C ... + 55 °C

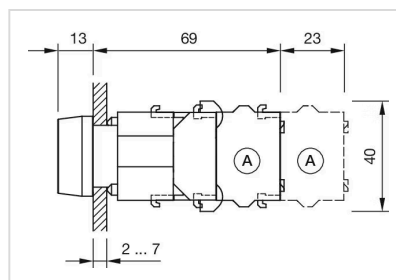
## OTHER

<b>Hints:</b>	Frontring with protective cover to be mounted with a torque of 0.4 Nm onto actuator,Max. 3 switching elements can be clipped on
<b>Housing material:</b>	Plastic
<b>Short Description:</b>	Actuator, 30 mm x 30 mm, flush, illuminative, Colourless, Plastic, transparent, square, Black, Plastic, Momentary, Screw terminal
<b>max. number of switching elements:</b>	3
<b>Housing colour:</b>	Black
<b>Mounting cut-outs:</b>	



A = Screw terminal  
 B = Push-in terminal (PIT)  
 C = Plug-in terminal 6.3 mm x 0.8 mm  
 D = Double plug-in terminal 6.3 mm x 0.8 mm

## Dimension drawings:



A = Screw terminal

## Wiring diagrams:

