

# Customer Information Sheet

DRAWING No.: M20-877XXXXP

SHEET 2 OF 2

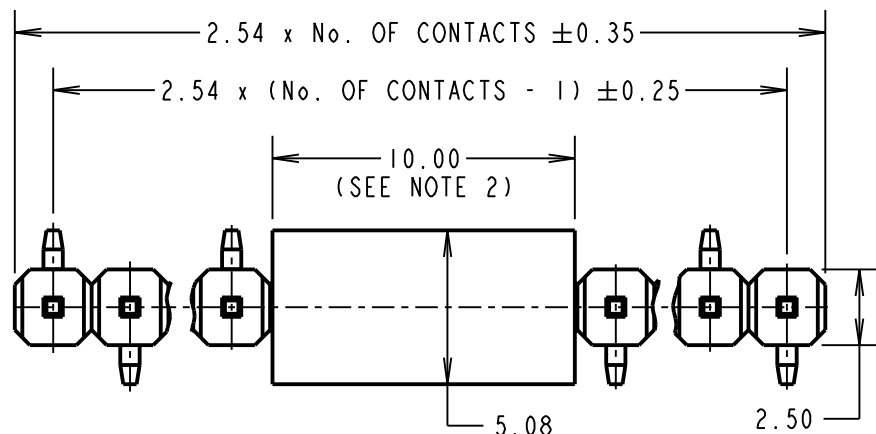
IF IN DOUBT - ASK

(C)

NOT TO SCALE

THIRD ANGLE PROJECTION

ALL DIMENSIONS IN mm



**OBSOLETE**  
All other size/finish combinations  
not listed as active

**Active  
products:**

M20-8770242P  
M20-8770542P  
M20-8770746P  
M20-8771042P

## SPECIFICATION:

### MATERIAL:

MOULDING = PA6T UL94V-0, BLACK

CONTACT = BRASS

FINISH (OVER NICKEL):

42 = GOLD ON CONTACT AREA,

100% TIN ON TAILS

46 = 100% TIN

### ELECTRICAL:

CURRENT RATING = 3A MAX

CONTACT RESISTANCE = 20mΩ MAX

INSULATION RESISTANCE = 1,000MΩ MIN

VOLTAGE RATING = 250V AC/DC

WITHSTANDING VOLTAGE = 500V AC FOR ONE MINUTE

### MECHANICAL:

DURABILITY = 50 OPERATIONS (TIN)

300 OPERATIONS (GOLD)

### ENVIRONMENTAL:

TEMPERATURE RANGE = -40°C TO +105°C

### PACKING:

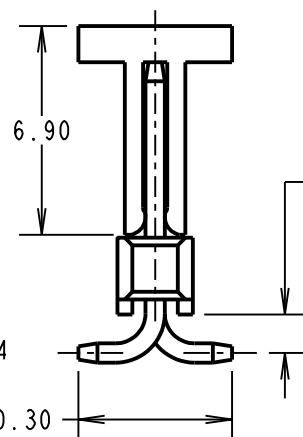
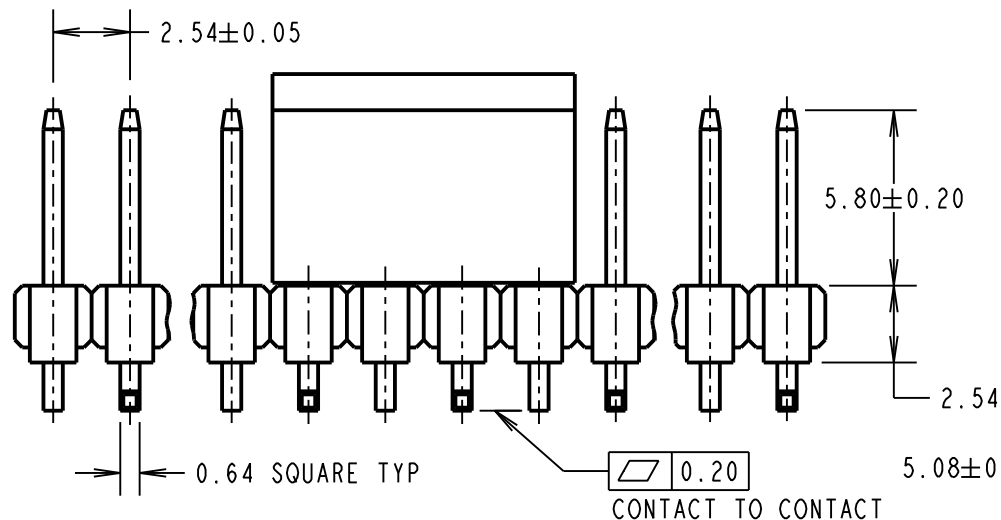
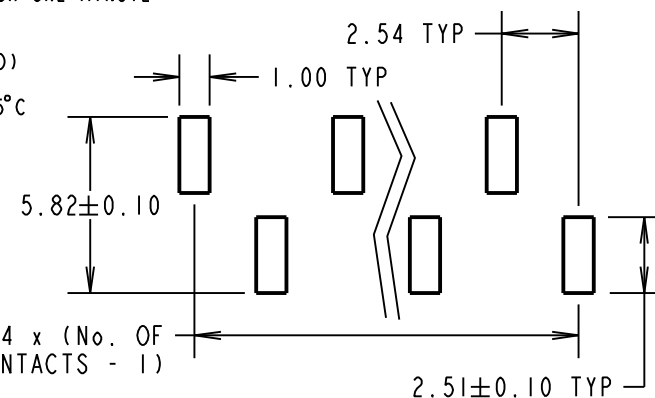
BAG

FOR COMPLETE SPECIFICATION,  
SEE COMPONENT SPECIFICATION  
C001XX (LATEST ISSUE)

## NOTES:

1. SEE DRAWING M20-877XXXXR FOR TAPE AND REELED VERSION, M20-877XXXX FOR STANDARD PRODUCT.
2. FOR 4 CONTACTS AND LESS, CAP LENGTH = 6.00mm.
3. ALL TOLERANCES ARE ±0.15mm UNLESS OTHERWISE STATED.

## RECOMMENDED PAD LAYOUT (TOLERANCE = ±0.05)



## ORDER CODE:

**M20-877XXXXP**

No. OF CONTACTS:  
02 TO 20

### FINISH:

42 = SELECTIVE GOLD + 100% TIN  
46 = 100% TIN

WJP	8	01.08.17	20398
NAME	ISS.	DATE	C/NOTE
APPROVED: W. J. PRESTON			
CHECKED: M. PLESTED			
DRAWN: J. KEIR			
CUSTOMER REF.:			
ASSEMBLY DRG:			

# HARWIN

www.harwin.com  
technical@harwin.com

THIS DRAWING AND ANY  
INFORMATION OR DESCRIPTIVE  
MATTER SET OUT HEREON ARE  
CONFIDENTIAL AND COPYRIGHT  
PROPERTY OF THE HARWIN  
GROUP AND MUST NOT BE  
DISCLOSED, LOANED, COPIED  
OR USED FOR MANUFACTURING,  
TENDERING OR FOR ANY  
OTHER PURPOSE WITHOUT  
THEIR WRITTEN PERMISSION.

## TOLERANCES

X = ±1mm  
X.X = ±0.50mm  
X.XX = ±0.10mm  
X.XXX = ±0.01mm  
ANGLES = ±5°  
UNLESS STATED

## MATERIAL:

SEE ABOVE

FINISH: SEE ABOVE

S/AREA: mm<sup>2</sup>

## TITLE:

2.54mm PITCH SIL SMT  
PIN HEADER ASSEMBLY  
WITH PICK & PLACE CAP

## DRAWING NUMBER:

**M20-877XXXXP**

SHT  
2 OF 2