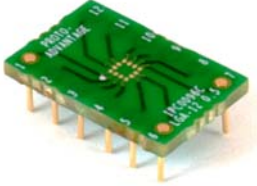


# IPC0096C *Proto Advantage*

Datasheet revision 1.0

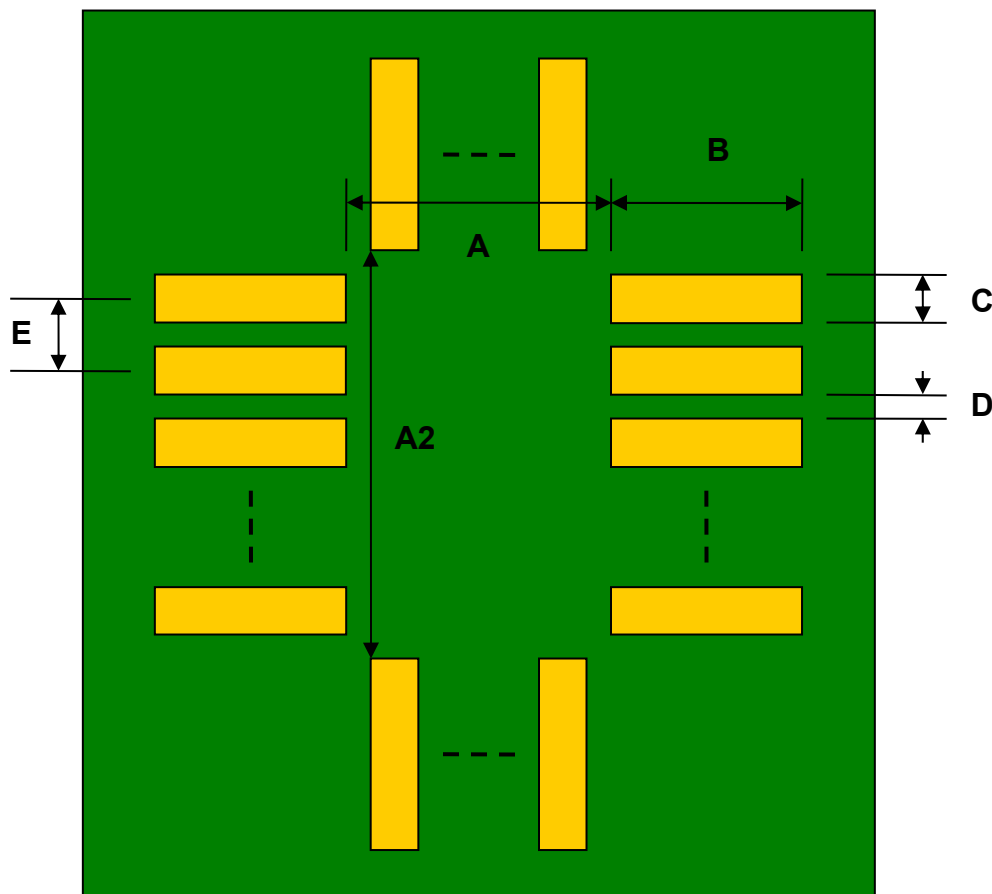
[www.Proto-Advantage.com](http://www.Proto-Advantage.com)

## LGA-12 to DIP-12 SMT Adapter (0.5 mm pitch, 2.0 x 2.0 mm body) *Compact Series*



| REF. | DIMENSIONS |      |      |        |       |      |
|------|------------|------|------|--------|-------|------|
|      | mm         |      |      | inches |       |      |
|      | MIN.       | TYP. | MAX. | MIN.   | TYP.  | MAX. |
| A    |            | 1.20 |      |        |       |      |
| A2   |            | 1.20 |      |        |       |      |
| B    |            | 0.35 |      |        |       |      |
| C    |            | 0.30 |      |        |       |      |
| D    |            | 0.20 |      |        |       |      |
| E    |            | 0.50 |      |        |       |      |
| F    |            |      |      |        | 0.300 |      |
| G    |            |      |      |        | 0.100 |      |
| H    |            | 0.46 |      |        |       |      |
| X    |            |      |      |        | 0.400 |      |
| Y    |            |      |      |        | 0.600 |      |

Top View (SMT Footprint)



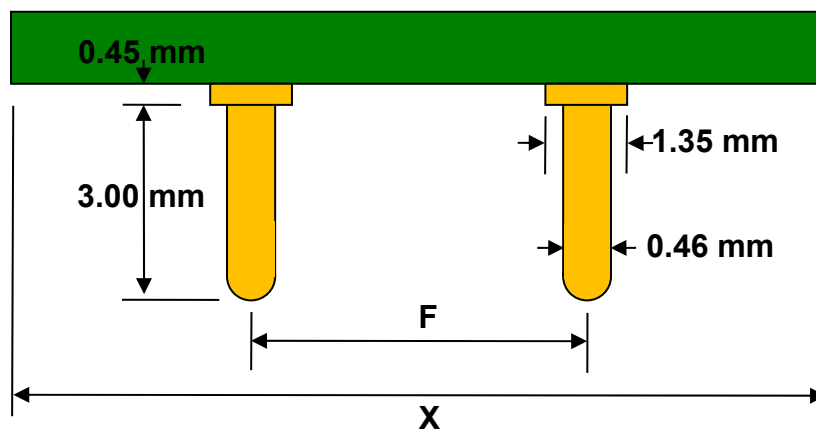
(Representative drawing only - not to scale)

### Bottom View (DIP Pins)



(Representative drawing only - not to scale)

### Side View (DIP Pins)



(Representative drawing only - not to scale)