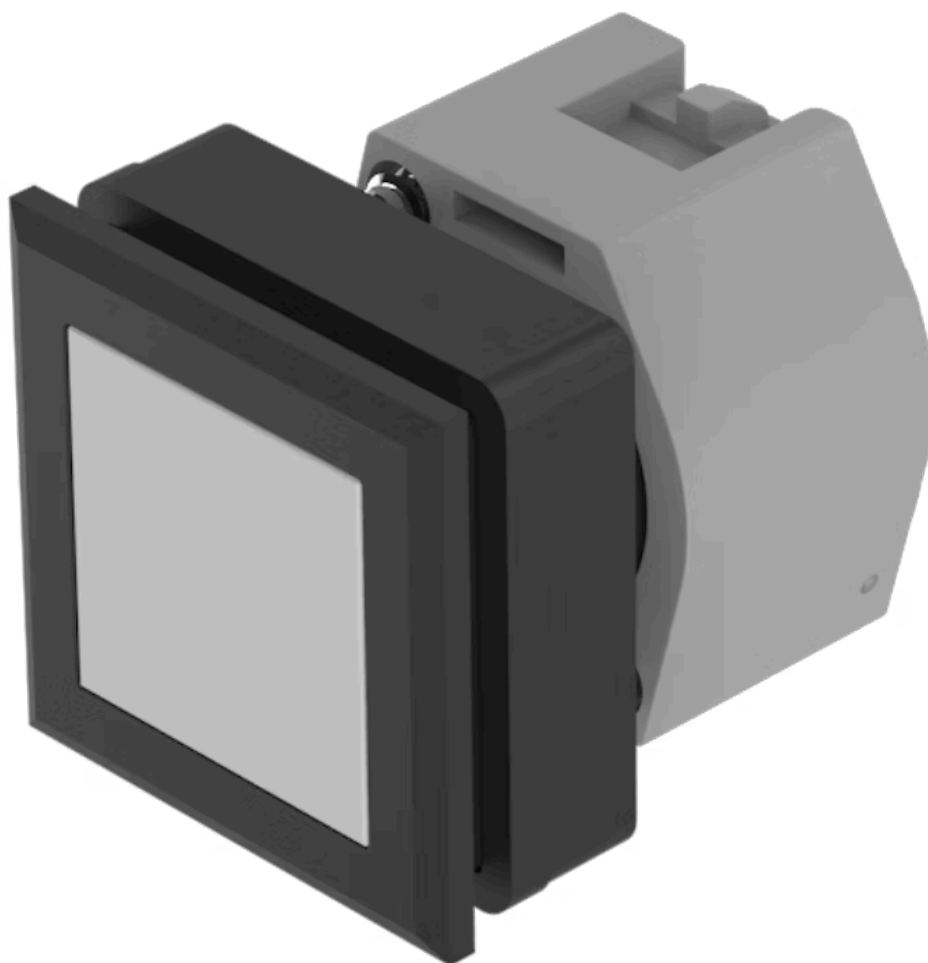


# Actuator

704.209.700



<https://eao.com/p/704.209.700>

Your product:

---



## 704.209.700 Actuator

### FRONT

|                       |               |
|-----------------------|---------------|
| Front bezel material: | Plastic       |
| Front bezel colour:   | Black         |
| Front form:           | square        |
| Front dimension:      | 35 mm x 35 mm |

### MOUNTING

|                   |               |
|-------------------|---------------|
| Design:           | flush         |
| Mounting cut-out: | 30 mm x 30 mm |

### OPERATING-/INDICATION PART

|                    |                  |
|--------------------|------------------|
| Lens shape:        | flush            |
| Lens colour:       | Colourless       |
| Lens material:     | Plastic          |
| Lens optics:       | transparent      |
| Lens illumination: | non illuminative |

### ELECTRICAL CHARACTERISTICS

|            |   |
|------------|---|
| Standards: | The switches comply with the "Standards for low-voltage switching devices" DIN EN 60947-1 |
|------------|---|

### MECHANICAL CHARACTERISTIC

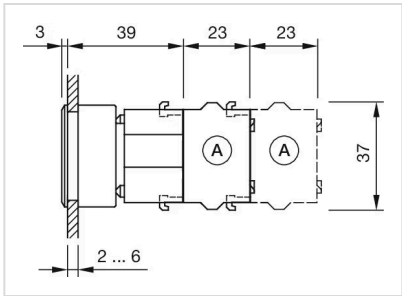
|                   |                         |
|-------------------|-------------------------|
| Weight:           | 0.051 kg                |
| Operating Travel: | ca. 5.8 mm $\pm$ 0.2 mm |

|                             |                             |
|-----------------------------|-----------------------------|
| <b>Switching action:</b>    | Momentary                   |
| <b>Mechanical lifetime:</b> | ≤3 Mio. cycles of operation |
| <b>Operating force:</b>     | 6.2 N                       |

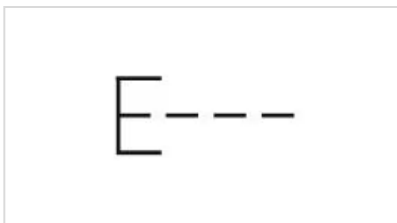
## AMBIENT CONDITION

|                               |                     |
|-------------------------------|---------------------|
| <b>Operating temperature:</b> | – 40 °C ... + 55 °C |
| <b>IP Protection:</b>         | IP65 front side     |
| <b>Storage temperature:</b>   | – 40 °C ... + 85 °C |

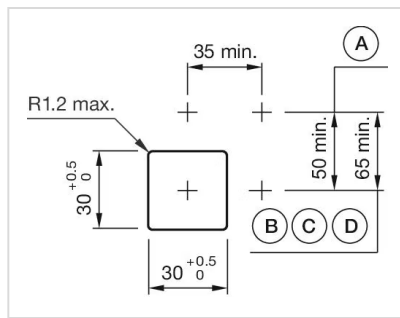
## OTHER

|   |  |
|---|--|
| <b>max. number of switching elements:</b> | 3  |
| <b>Housing colour:</b>                    | Black  |
| <b>Short Description:</b>                 | Actuator, 30 mm x 30 mm, 35 mm x 35 mm, flush, non illuminative, Colourless, Plastic, transparent, square, Black, Plastic, Momentary |
| <b>Housing material:</b>                  | Plastic  |
| <b>Hints:</b>                             | Max. 3 switching elements can be clipped on  |
| <b>Dimension drawings:</b>                |  <p>A = Screw terminal</p>                       |

## Wiring diagrams:



## Mounting cut-outs:



- A = Screw terminal
- B = Push-in terminal (PIT)
- C = Plug-in terminal 6.3 mm x 0.8 mm
- D = Double plug-in terminal 6.3 mm x 0.8 mm